

# NSC-95397

## CDC25 inhibitor

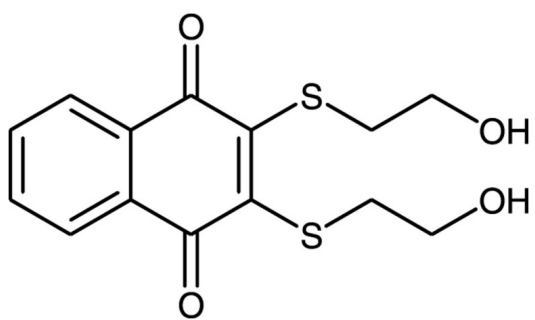
A potent and selective inhibitor of Cdc25 phosphatase ( $K_i$ 's for Cdc25A, B and C are 32, 96 and 40 nM respectively). NSC-95397 inhibits the growth of several human tumor cell lines and blocks G2/M cell cycle transition.

Citations: 2

[View Online »](#)

Manuals, SDS & CofA

[View Online »](#)



## Handling & Storage

Use/Stability	As indicated on product label or CoA when stored as recommended.
Long Term Storage	-20°C
Shipping	Ambient Temperature

## Regulatory Status

RUO - Research Use Only

## Product Details

Appearance	Orange crystalline solid.
CAS	93718-83-3
Couple Target	CDC25, Dual specificity phosphatase
Couple Type	Inhibitor
Formula	$C_{14}H_{14}O_4S_2$
MW	310.4
Purity	≥98% (HPLC)
Solubility	Soluble in DMSO (50mM) or ethanol (5mM).

Last modified: May 29, 2024



ENZO LIFE SCIENCES,  
INC.  
Phone: 800.942.0430  
[info-usa@enzolifesciences.com](mailto:info-usa@enzolifesciences.com)

European Sales Office  
ENZO LIFE SCIENCES  
(ELS) AG  
Phone: +41 61 926 8989  
[info-eu@enzolifesciences.com](mailto:info-eu@enzolifesciences.com)

Belgium, The Netherlands  
& Luxembourg  
Phone: +32 3 466 0420  
[info-be@enzolifesciences.com](mailto:info-be@enzolifesciences.com)

France  
Phone: +33 472 440 655  
[info-fr@enzolifesciences.com](mailto:info-fr@enzolifesciences.com)

Germany  
Phone: +49 7621 5500 526  
[info-de@enzolifesciences.com](mailto:info-de@enzolifesciences.com)

UK & Ireland  
Phone (UK customers):  
0845 601 1488  
Phone: +44 1392 825900  
[info-uk@enzolifesciences.com](mailto:info-uk@enzolifesciences.com)