

Noxa monoclonal antibody (114C307.1)

This antibody is covered by our [Worry-Free Guarantee](#).

Citations: 35

[View Online »](#)

Ordering Information

[Order Online »](#)

ALX-804-408-C100	100µg
------------------	-------

Manuals, SDS & CofA

[View Online »](#)

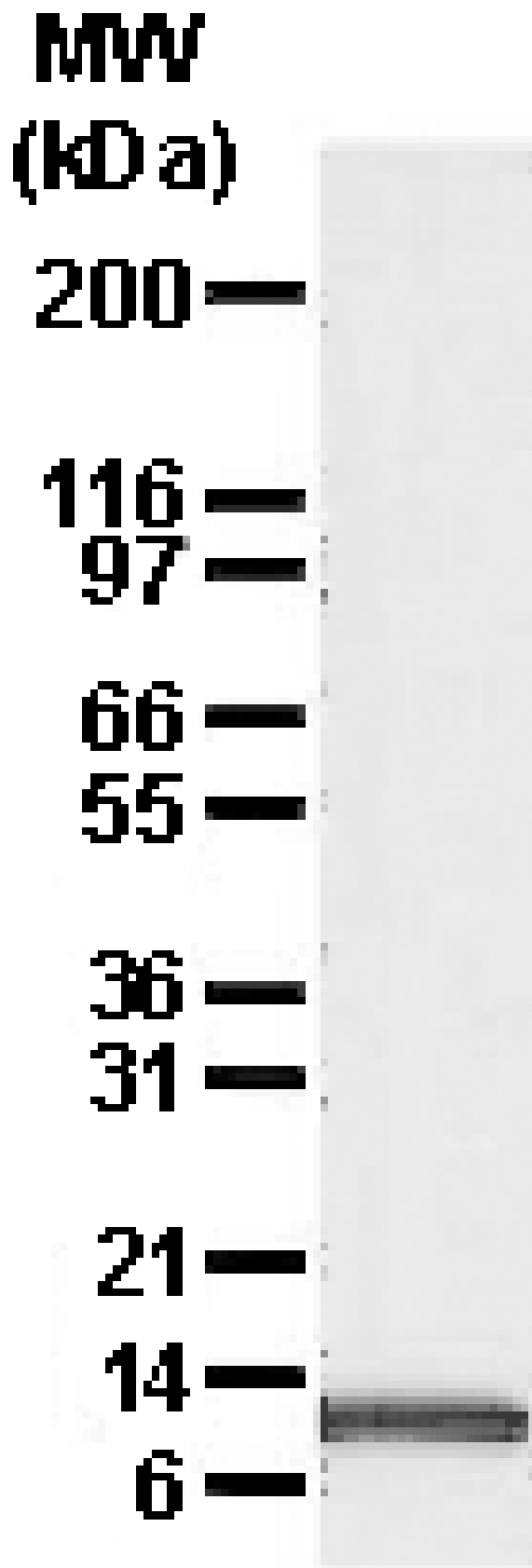
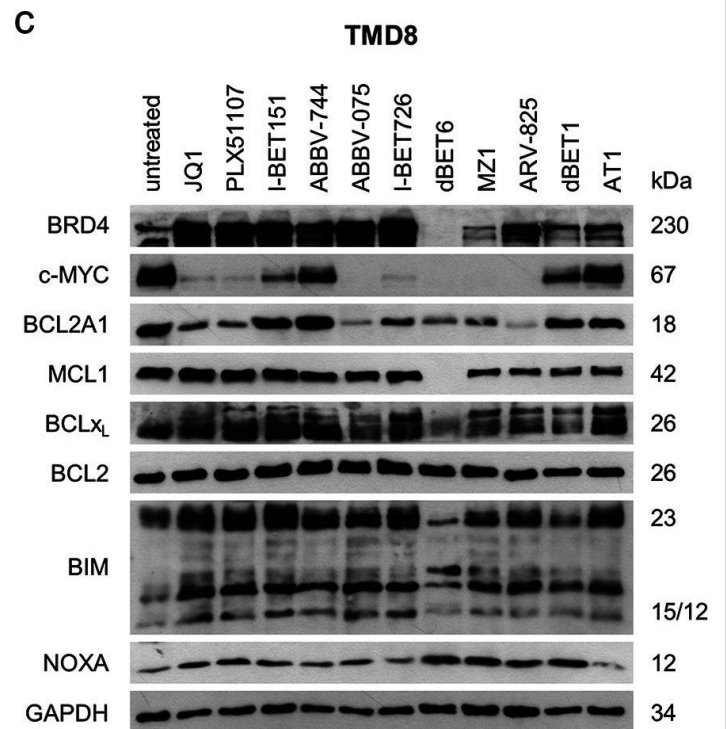
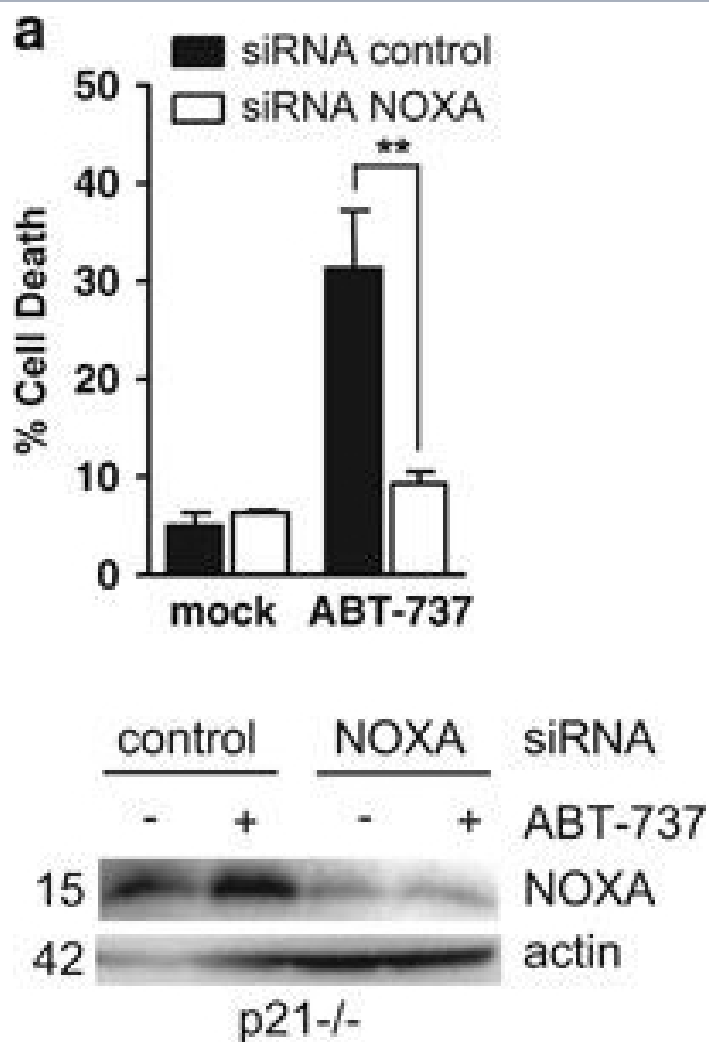


Figure: Western blot detection of Noxa in RL-7 cell (a follicular lymphoma) lysate. A protein band of approximate molecular weight of ~11kDa was detected using ALX-804-408 at 2µg/ml dilution.



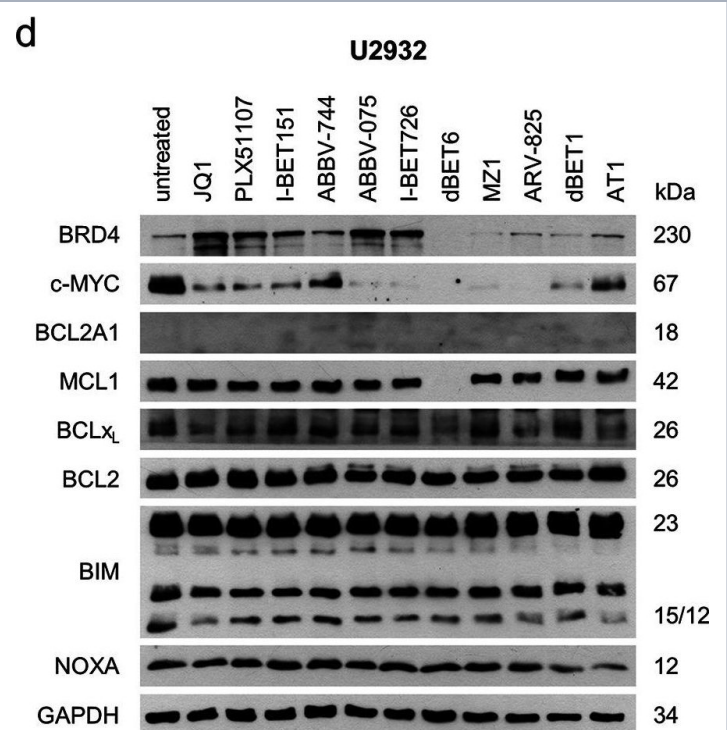
BET inhibitors/-degraders change the protein expression and induce cell death in DLBCL. a) Induction of cell death [%] after 24 h treatment with the indicated BET inhibitors/-degraders at 1µM measured by AnnexinV-FITC/PI staining and flow cytometry [data are shown as mean + standard deviation (SD) with n = 3]. b- d) Western Blot of BRD4, c-MYC and BCL2-family proteins after 24 h treatment with the indicated BET inhibitors/-degraders at 1µM in b) SUDHL2, c) TMD8 and d) U2932 cells with GAPDH serving as housekeeping control [one representative blot out of three independent experiments is shown]

Image collected and cropped by CiteAb under a CC-BY license from the following publication: Inhibition of bromodomain and extra-terminal proteins targets constitutively active NFκB and STAT signaling in lymphoma and influences the expression of the antiapoptotic proteins BCL2A1 and c-MYC. *Cell Commun Signal* (2024)



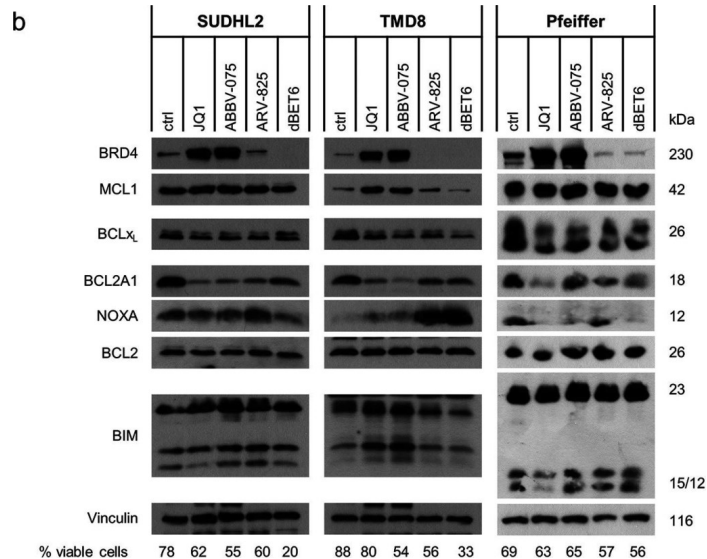
p53-independent induction of NOXA is involved in HCT116 p21^{-/-} sensitivity to ABT-737. (a) HCT116 p21^{-/-} cells were transfected by control or NOXA siRNAs for 48 h and treated for 24 additional hours by 2 μ M ABT-737 before cell death analysis and western blot. (b) HCT116 p21^{-/-} cells previously infected with a control or p53 shRNAs were treated by 2 μ M ABT-737 for 24h before western blot analysis. (c) HCT116 p53^{-/-} cells were transfected with pcDNA3 or pcDNA3-NOXA vector. Twenty-four hours later, cells were treated by 2 μ M ABT-737 for 24 h before cell death analysis. Data presented are mean \pm S.E.M. of three independent experiments. **P<0.01

Image collected and cropped by CiteAb under a CC-BY license from the following publication: Constitutive p53 heightens mitochondrial apoptotic priming and favors cell death induction by BH3 mimetic inhibitors of BCL-xL. *Cell Death Dis* (2016)



BET inhibitors/-degraders change the protein expression and induce cell death in DLBCL. a) Induction of cell death [%] after 24 h treatment with the indicated BET inhibitors/-degraders at 1 μ M measured by AnnexinV-FITC/PI staining and flow cytometry [data are shown as mean + standard deviation (SD) with n = 3]. b-d) Western Blot of BRD4, c-MYC and BCL2-family proteins after 24 h treatment with the indicated BET inhibitors/-degraders at 1 μ M in b) SUDHL2, c) TMD8 and d) U2932 cells with GAPDH serving as housekeeping control [one representative blot out of three independent experiments is shown]

Image collected and cropped by CiteAb under a CC-BY license from the following publication: Inhibition of bromodomain and extra-terminal proteins targets constitutively active NF κ B and STAT signaling in lymphoma and influences the expression of the antiapoptotic proteins BCL2A1 and c-MYC. *Cell Commun Signal* (2024)



Viability and protein levels are influenced by selected BET inhibitors/-degraders. a) Cell viability determined by CTG assay after 48 h treatment with the indicated BET inhibitors/ degraders in ABC and CGB cell lines [data are shown as mean +/- standard deviation (SD) with n = 3]. b) Western Blot of BRD4 and BCL2 family proteins in SUDHL2, TMD8 and Pfeiffer cells treated with JQ1 [1μM], ABBV-075 [SUDHL2 and Pfeiffer 100nM/TMD8 300nM], ARV-825 [SUDHL2 100nM/TMD8 30nM/Pfeiffer 10 nM] and dBET6 [SUDHL2 100nM/TMD8 30nM/Pfeiffer 10 nM]. Cell viability determined by AnnexinV-FITC/PI staining and flow cytometry after 24 h incubation is indicated below the Western blot [one representative blot out of three independent experiments is shown]

Image collected and cropped by CiteAb under a CC-BY license from the following publication: Inhibition of bromodomain and extra-terminal proteins targets constitutively active NFκB and STAT signaling in lymphoma and influences the expression of the antiapoptotic proteins BCL2A1 and c-MYC. *Cell Commun Signal* (2024)

Handling & Storage

Use/Stability Stable for 6 months when stored at +4°C.

Handling Avoid freeze/thaw cycles.

Short Term Storage +4°C

Long Term Storage -20°C

Shipping Blue Ice

Regulatory Status RUO - Research Use Only

Product Details

Application ICC, IHC (PS), WB

Application Notes Detects a band of ~11kDa by Western blot.

Clone 114C307.1

Formulation Liquid. In PBS containing 0.05% sodium azide.

Host Mouse

Immunogen Recombinant human Noxa.

Isotype IgG1

Purity Detail Protein G-affinity purified.

Recommendation Dilutions/Conditions Immunohistochemistry (paraffin sections, 5µg/ml)Western Blot (1-2µg/ml)Suggested dilutions/conditions may not be available for all applications.Optimal conditions must be determined individually for each application.

Species Reactivity Human, Mouse

UniProt ID Q13794



ENZO LIFE SCIENCES,
Phone: 800.942.0430
info-usa@enzolifesciences.com

European Sales Office
(ELS) AG
Phone: +41 61 926 8989
info-eu@enzolifesciences.com

Belgium, The Netherlands
Phone: +32 3 466 0420
info-be@enzolifesciences.com

France
Phone: +33 1 402 44 555
info-fr@enzolifesciences.com

Germany
Phone: +49 7621 5500 526
info-de@enzolifesciences.com

UK & Ireland
Phone (UK customers):
0845 601 1488
Phone: +44 1392 825900
info-uk@enzolifesciences.com