

Nodularin (linear)

Precursor of the highly toxic cyclic pentapeptide, nodularin.

Linear nodularin has been demonstrated to be a biosynthetic precursor of the highly toxic cyclic pentapeptide, nodularin. It is an intermediate of biodegradation by natural populations of bacteria in aquatic samples.

Citations: 8

[View Online »](#)

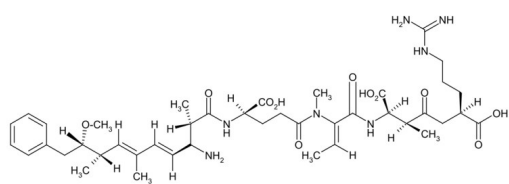
Ordering Information

[Order Online »](#)

ALX-350-182-C100	100µg
------------------	-------

Manuals, SDS & CofA

[View Online »](#)



Handling & Storage

Use/Stability As indicated on product label or CoA when stored as recommended.

Long Term Storage -20°C

Shipping Ambient Temperature

Regulatory Status RUO - Research Use Only

Product Details

Appearance Pale powder or an oil (film), depending on the lot.

Couple Target Serine/threonine-protein phosphatase

Couple Type Inhibitor

Formula $C_{41}H_{62}N_8O_{11}$

Identity Identity determined by MS.

MW 843.0

Purity ≥95% (HPLC)

RTECS GU2294250

Solubility Soluble in methanol:water (1:1).

Source Isolated from *Nodularia spumigena*.

Technical Info / Product Notes Not toxic to mice at 2 mg/kg I.P.



ENZO LIFE SCIENCES,
INC.
Phone: 800.942.0430
[info-
usa@enzolifesciences.com](mailto:info-usa@enzolifesciences.com)

European Sales Office
ENZO LIFE SCIENCES
(ELS) AG
Phone: +41 61 926 8989
[info-
eu@enzolifesciences.com](mailto:info-eu@enzolifesciences.com)

Belgium, The Netherlands
& Luxembourg
Phone: +32 3 466 0420
[info-
be@enzolifesciences.com](mailto:info-be@enzolifesciences.com)

France
Phone: +33 472 440 655
[info-
fr@enzolifesciences.com](mailto:info-fr@enzolifesciences.com)

Germany
Phone: +49 7621 5500 526
[info-
de@enzolifesciences.com](mailto:info-de@enzolifesciences.com)

UK & Ireland
Phone (UK customers):
0845 601 1488
Phone: +44 1392 825900
[info-
uk@enzolifesciences.com](mailto:info-uk@enzolifesciences.com)