

# Neuropeptide Y receptor Y<sub>1</sub> polyclonal antibody

Neuropeptide Y (NPY) and the closely related peptide YY (PYY) and pancreatic polypeptide (PP) are a family of 36-amino acid, tyrosine-rich peptides with amidated C-terminal ends that are known to regulate gastrointestinal and central nervous system functions including food intake and the inhibition of anxiety. Four functional NPY receptors (Y1/Y2/Y4/Y5) have been identified to date, with a fifth (y6) being a non-functional receptor in primates that is absent from the rat genome. Y1, Y2, and Y5 receptors preferentially bind NPY and PYY, while the Y4 receptor preferentially binds PP. All four receptors signal via coupling to Gi/o alpha subunits, inhibiting adenylyl cyclase activity, thereby decreasing intracellular cAMP levels. Y1 receptor deficient mice display a variety of physical and behavioral phenotypes including obesity, hyperinsulinemia, and increased territorial behavior.

This antibody is covered by our [Worry-Free Guarantee](#).

Citations: 1

[View Online »](#)

## Ordering Information

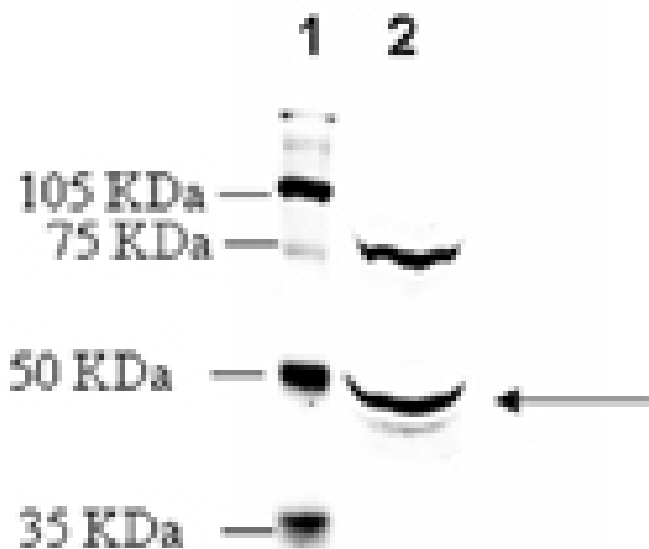
[Order Online »](#)

ADI-905-798-100

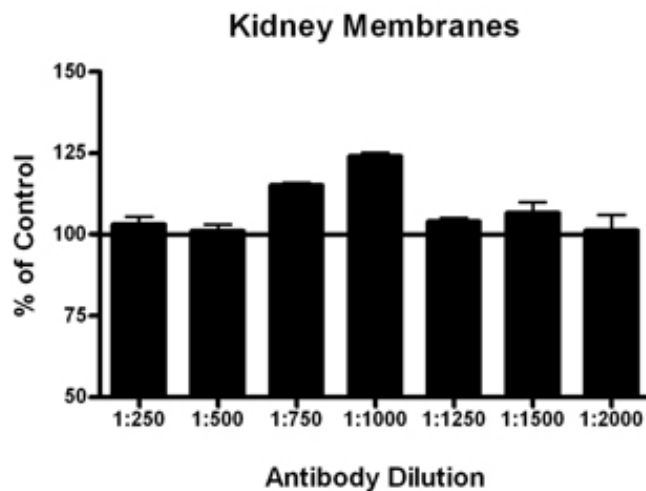
100µg

## Manuals, SDS & CofA

[View Online »](#)



Western blot analysis: MW marker (1) and 20µg rat brain extract (2) probed with Neuropeptide Y Receptor (Y1) pAb at 5.1µg/ml.



Membrane ELISA: Lewis rat heart membranes (5µg/well) were treated with 1µM concentrations of agonist (NPY) and probed with Neuropeptide Y Receptor (Y1) pAb (1:250 to 1:2000 of a 1µg/µl stock solution) by ELISA. Data from vehicle treated cells were taken as 100%. Results are the mean ± SEM (n=4).

## Handling & Storage

**Handling** Keep on ice at all times.

**Long Term Storage** -20°C

**Shipping** Blue Ice

**Regulatory Status** RUO - Research Use Only

## Product Details

**Alternative Name** NPY1R, NPYR

**Application** ELISA, WB

**Application Notes** Suitable for membrane-based ELISA.  
Predicted MW of ~44kDa. Higher MW species (~80kDa) also observed by Western blot which may reflect post-translational modification or dimerization of the receptor.

**Crossreactivity** Predicted species reactivity based on epitope sequence homology: horse, chimpanzee, rhesus macaque, guinea pig.

**Formulation** Liquid. In PBS containing 50% glycerol and 0.01% sodium azide.

**Host** Rabbit

**Immunogen** Synthetic peptide corresponding to the sequence near the N-terminus of rat neuropeptide Y receptor Y1.

**Purity Detail** Peptide affinity purified.

**Species Reactivity** Human, Mouse, Rat

**UniProt ID** P21555

### Worry-free Guarantee

This antibody is covered by our [Worry-Free Guarantee](#)



ENZO LIFE SCIENCES,  
INC.  
Phone: 800.942.0430  
[info-  
usa@enzolifesciences.com](mailto:info-usa@enzolifesciences.com)

European Sales Office  
ENZO LIFE SCIENCES  
(ELS) AG  
Phone: +41 61 926 8989  
[info-  
eu@enzolifesciences.com](mailto:info-eu@enzolifesciences.com)

Belgium, The Netherlands  
& Luxembourg  
Phone: +32 3 466 0420  
[info-  
fr@enzolifesciences.com](mailto:info-fr@enzolifesciences.com)

France  
Phone: +33 472 440 655  
[info-  
fr@enzolifesciences.com](mailto:info-fr@enzolifesciences.com)

Germany  
Phone: +49 7621 5500 526  
[info-  
de@enzolifesciences.com](mailto:info-de@enzolifesciences.com)

UK & Ireland  
Phone (UK customers):  
0845 601 1488  
Phone: +44 1392 825900  
[info-  
uk@enzolifesciences.com](mailto:info-uk@enzolifesciences.com)

Last modified: May 29, 2024

For local distributors and detailed product information visit us online: [enzo.com](http://enzo.com) All product names, logos, and brands are the property of their respective owners.