

Neuron Specific Enolase monoclonal antibody

This product is intended for qualitative immunohistochemistry with normal and neoplastic formalin-fixed, paraffin-embedded tissue sections, to be viewed by light microscopy.

Neuron-Specific Enolase (NSE) is a key enzyme found predominantly in neurons and neuroendocrine cells. It plays a crucial role in glycolysis, the metabolic pathway that generates energy in cells. NSE is released into the bloodstream following neuronal injury or damage, making it a valuable biomarker for neurological disorders, such as stroke, traumatic brain injury, and neurodegenerative diseases. In clinical practice, measurement of NSE levels in blood or cerebrospinal fluid is used for diagnosing and monitoring these conditions, as elevated NSE levels often indicate neuronal damage or dysfunction. Additionally, NSE has emerged as a prognostic marker in certain cancers, particularly neuroendocrine tumors, where elevated serum levels correlate with tumor burden and disease progression.

This antibody is covered by our [Worry-Free Guarantee](#).

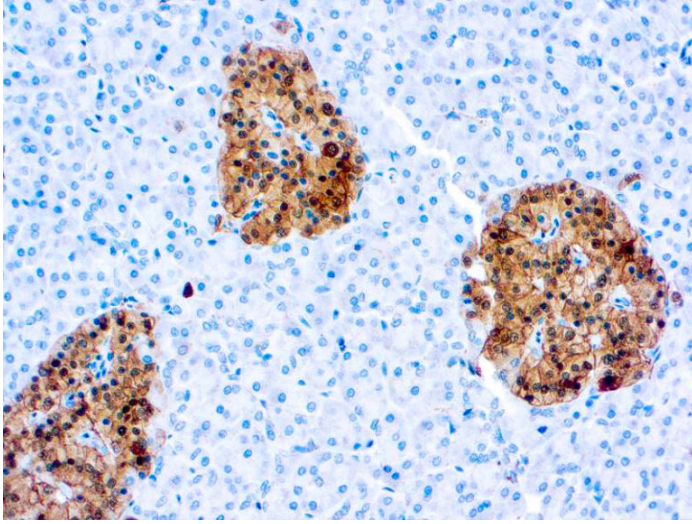
Ordering Information

[Order Online »](#)

ENZ-ABS857-1000	1ml
ENZ-ABS857-0100	100µl

Manuals, SDS & CofA

[View Online »](#)



Formalin fixed paraffin embedded human pancreas
stained with NSE antibody

Handling & Storage

Long Term Storage +4°C

Shipping Blue Ice

Regulatory Status

RUO - Research Use Only

Product Details

Alternative Name NSE

Application IHC (PS)

Application Notes Pretreatment: Citrate Buffer pH 6.0

Clone VI-H14

Formulation This product is supplied as an immunoglobulin and contains sodium azide as a preservative

Host Mouse

Immunogen γ - γ enolase from human brain

Isotype IgG1

Positive Control Tonsil

Recommendation Dilutions/Conditions 1:25 – 1:100Antibody dilutions should be appropriately adjusted and verified according to the detection system used.Optimal conditions must be determined individually for each application.

Species Reactivity Human

Worry-free Guarantee This antibody is covered by our [Worry-Free Guarantee](#)

.