

Nestin monoclonal antibody (11)

The anti-Nestin antibody detects human Nestin, a key intermediate filament protein expressed in neural stem cells and progenitors. This antibody is optimized for applications such as immunohistochemistry (IHC), flow cytometry, and Western blotting (WB), making it an essential choice for studying neural development, regeneration, and stem cell biology.

Nestin is a type VI intermediate filament protein prominently expressed in neural stem cells and progenitors during embryonic development. It plays a crucial role in maintaining the structural integrity and dynamic remodeling of the cytoskeleton in rapidly dividing cells. As development progresses, Nestin expression diminishes in mature neurons and glial cells, making it a hallmark of neural stem and progenitor cells. Beyond the nervous system, Nestin is expressed in other stem or progenitor cell types during development and regeneration, such as in muscle and endothelial cells. Its re-expression has been observed in pathological conditions like glioblastoma and other cancers, where it is associated with tumor proliferation and plasticity.

This antibody is covered by our [Worry-Free Guarantee](#).

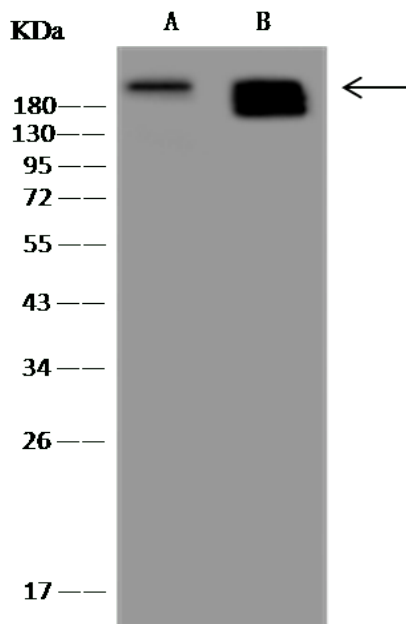
Ordering Information

[Order Online »](#)

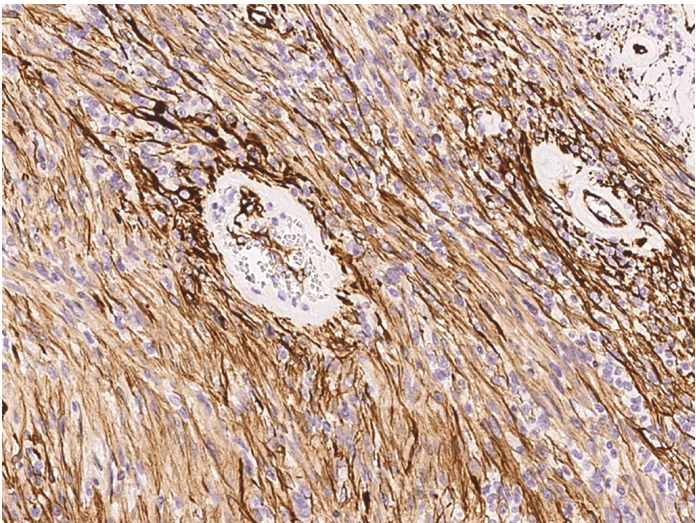
ENZ-ABS1047-0100	100µl
------------------	-------

Manuals, SDS & CofA

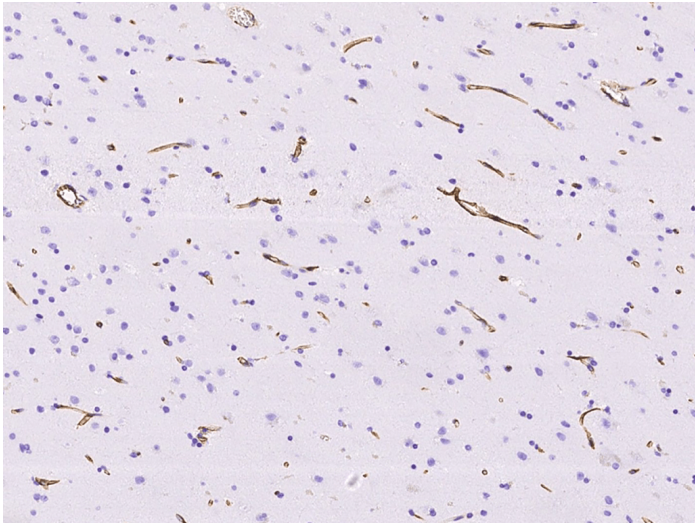
[View Online »](#)



Anti-NES mouse monoclonal antibody at 1:500 dilution
 Lane A: HeLa Whole Cell Lysate. Lane B: U251MG
 Whole Cell Lysate
 Lysates/proteins at 30 µg per lane. Secondary ab: Goat
 Anti-Mouse IgG (H+L)/HRP at 1/10'000 dilution.
 Predicted band size:177 kDa



Immunohistochemical staining of human Nestin in
 human neurilemmoma with mouse monoclonal antibody
 at 1:1000 dilution, formalin-fixed paraffin embedded
 sections.



Immunohistochemical staining of human Nestin in
 human fasciculated sarcoma with mouse monoclonal
 antibody at 1:1000 dilution, formalin-fixed paraffin
 embedded sections.

Handling & Storage

Handling	Avoid freeze-thaw cycles.
Long Term Storage	-20°C
Shipping	Blue Ice

Regulatory Status

RUO - Research Use Only

Product Details

Alternative Name	NES
Application	Flow Cytometry, IHC (PS), IP, WB
Clone	11
Formulation	Liquid. 0.2 µm filtered solution in PBS. Carrier-free. Preservative-free.
Host	Mouse
Immunogen	Synthetic peptide corresponding to the N-terminus of the Human Nestin / NES.
Isotype	IgG
Purity Detail	Protein A purified.
Recommendation Dilutions/Conditions	Western Blot (1:500-1:2'000) Immunohistochemistry (paraffin sections) (1:200-1:2'000) Flow Cytometry (1:25-1:100) Immunoprecipitation (1-5 µL/mg of lysate) Suggested dilutions/conditions may not be available for all applications. Optimal conditions must be determined individually for each application.
Species Reactivity	Human
Worry-free Guarantee	This antibody is covered by our Worry-Free Guarantee

Last modified: January 9, 2025



ENZO LIFE SCIENCES,
INC.
Phone: 800.942.0430
[info-
usa@enzolifesciences.com](mailto:info-usa@enzolifesciences.com)

European Sales Office
ENZO LIFE SCIENCES
(ELS) AG
Phone: +41 61 926 8989
[info-
eu@enzolifesciences.com](mailto:info-eu@enzolifesciences.com)

Belgium, The Netherlands
& Luxembourg
Phone: +32 3 466 0420
[info-
be@enzolifesciences.com](mailto:info-be@enzolifesciences.com)

France
Phone: +33 472 440 655
[info-
fr@enzolifesciences.com](mailto:info-fr@enzolifesciences.com)

Germany
Phone: +49 7621 5500 526
[info-
de@enzolifesciences.com](mailto:info-de@enzolifesciences.com)

UK & Ireland
Phone (UK customers):
0845 601 1488
Phone: +44 1392 825900
[info-
uk@enzolifesciences.com](mailto:info-uk@enzolifesciences.com)