

Mouse IgG₁ isotype control, monoclonal antibody (MOPC-21) (PE conjugate)

Isotype matched controls are useful in flow cytometry to determine a gross estimate of non-specific binding that may be observed with a specific antibody of interest. In general, an isotype control should be of the same species and isotype as the antibody of interest, used at the same concentration, and conjugated to the same fluorophore. This reagent is an IgG1 isotype mouse monoclonal antibody (Clone # MOPC-21) conjugated to phycoerythrin (PE). It is intended for use as an isotype control antibody for flow cytometry.

This antibody is covered by our [Worry-Free Guarantee](#).

Citations: 3

[View Online »](#)

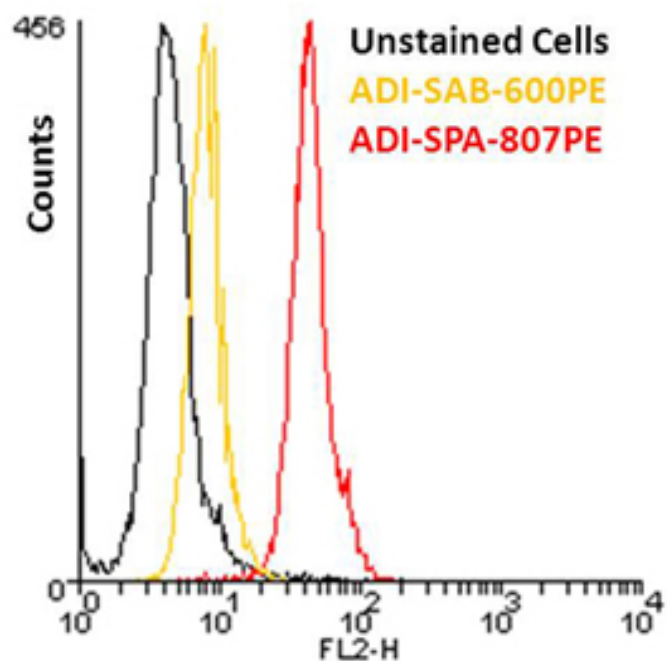
Ordering Information

[Order Online »](#)

ADI-SAB-600PE-D	50µg
ADI-SAB-600PE-F	200µg

Manuals, SDS & CofA

[View Online »](#)



Flow cytometry analysis of 10^6 Jurkat cells using the Isotype Control for IgG₁ PE compared with HSP60, mAb (LK-2) (PE conjugate) at a concentration of 10 μ g/ml.

Handling & Storage

Handling	Avoid freeze/thaw cycles. Protect from light.
Long Term Storage	+4°C
Shipping	Blue Ice

Regulatory Status

RUO - Research Use Only

Product Details

Application	Flow Cytometry
Clone	MOPC-21
Formulation	Liquid. In PBS, pH 7.2, containing 0.09% sodium azide.
Host	Mouse
Isotype	IgG1
Purity Detail	Protein G-affinity purified.
Recommendation Dilutions/Conditions	Flow Cytometry (10µg/ml)Suggested dilutions/conditions may not be available for all applications.Optimal conditions must be determined individually for each application.
Source	Purified from ascites.
Species Reactivity	Species independent
Worry-free Guarantee	This antibody is covered by our Worry-Free Guarantee .



ENZO LIFE SCIENCES,
INC.
Phone: 800.942.0430
[info-
usa@enzolifesciences.com](mailto:info-usa@enzolifesciences.com)

European Sales Office
ENZO LIFE SCIENCES
(ELS) AG
Phone: +41 61 926 8989
[info-
eu@enzolifesciences.com](mailto:info-eu@enzolifesciences.com)

Belgium, The Netherlands
& Luxembourg
Phone: +32 3 466 0420
[info-
be@enzolifesciences.com](mailto:info-be@enzolifesciences.com)

France
Phone: +33 472 440 655
[info-
fr@enzolifesciences.com](mailto:info-fr@enzolifesciences.com)

Germany
Phone: +49 7621 5500 526
[info-
de@enzolifesciences.com](mailto:info-de@enzolifesciences.com)

UK & Ireland
Phone (UK customers):
0845 601 1488
Phone: +44 1392 825900
[info-
uk@enzolifesciences.com](mailto:info-uk@enzolifesciences.com)