

Mitoxantrone . dihydrochloride

DNA intercalator and Topoisomerase II inhibitor

Antiviral, antibacterial, antiprotozoal, immunomodulating, and antineoplastic cytostatic anthraquinone derivative. Induces DNA damage by intercalating into DNA and inhibiting topoisomerase II. Induces interstrand DNA cross-links and DNA-protein cross-links in cellular systems. Has been shown to be an inhibitor of DNA methylation.

Citations: 7

[View Online »](#)

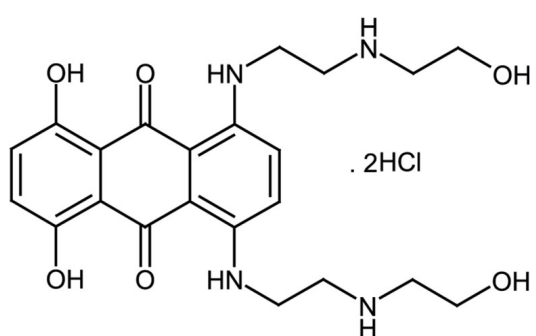
Ordering Information

[Order Online »](#)

ALX-400-050-M010	10mg
ALX-400-050-M050	50mg

Manuals, SDS & CofA

[View Online »](#)



Handling & Storage

Use/Stability As indicated on product label or CoA when stored as recommended.

Long Term Storage -20°C

Shipping Ambient Temperature

Regulatory Status RUO - Research Use Only

Product Details

Alternative Name 1,4-Dihydroxy-5,8-bis[[2-[(2-hydroxyethyl)amino]ethyl]amino]-9,10-anthracenedione . dihydrochloride

Appearance Blue to black crystalline solid.

CAS 70476-82-3

Couple Target Topoisomerase

Couple Type Inhibitor

Formula $C_{22}H_{28}N_4O_6 \cdot 2HCl$

Identity Determined by IR.

MI 14: 6217

MW 444.5 . 73.0

Purity ≥97% (Assay)

RTECS CB5748500

Solubility Soluble in water; slightly soluble in 100% ethanol or methanol; insoluble in acetonitrile or acetone.

Source Synthetic.



ENZO LIFE SCIENCES,
INC.
Phone: 800.942.0430
[info-
usa@enzolifesciences.com](mailto:info-usa@enzolifesciences.com)

European Sales Office
ENZO LIFE SCIENCES
(ELS) AG
Phone: +41 61 926 8989
[info-
eu@enzolifesciences.com](mailto:info-eu@enzolifesciences.com)

Belgium, The Netherlands
& Luxembourg
Phone: +32 3 466 0420
[info-
fr@enzolifesciences.com](mailto:info-fr@enzolifesciences.com)

France
Phone: +33 472 440 655
[info-
fr@enzolifesciences.com](mailto:info-fr@enzolifesciences.com)

Germany
Phone: +49 7621 5500 526
[info-
de@enzolifesciences.com](mailto:info-de@enzolifesciences.com)

UK & Ireland
Phone (UK customers):
0845 601 1488
Phone: +44 1392 825900
[info-
uk@enzolifesciences.com](mailto:info-uk@enzolifesciences.com)