

Misoprostol

Prostanoid receptor ligand

A cytoprotective PGE₁ analog. Prevents NSAID-induced gastric ulceration. Misoprostol is a methyl ester and is therefore inactive in receptor preparations and in other situations where it does not undergo ester hydrolysis.

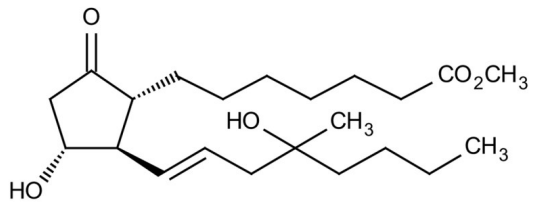
Ordering Information

[Order Online »](#)

BML-PG051-0010	10mg
----------------	------

Manuals, SDS & CofA

[View Online »](#)



Handling & Storage

Use/Stability As indicated on product label or CoA when stored as recommended.

Long Term Storage -20°C

Shipping Blue Ice

Regulatory Status RUO - Research Use Only

Product Details

Alternative Name	SC-29333
Appearance	Pale yellow oil.
CAS	59122-46-2
Couple Target	Prostanoid receptor
Couple Type	Ligand
Formula	$C_{22}H_{38}O_5$
MW	382.5
Purity	≥99% (TLC)
Solubility	Soluble in ethanol (50mg/ml).

Last modified: May 29, 2024



ENZO LIFE SCIENCES,
INC.
Phone: 800.942.0430
[info-
usa@enzolifesciences.com](mailto:info-usa@enzolifesciences.com)

European Sales Office
ENZO LIFE SCIENCES
(ELS) AG
Phone: +41 61 926 8989
[info-
eu@enzolifesciences.com](mailto:info-eu@enzolifesciences.com)

Belgium, The Netherlands
& Luxembourg
Phone: +32 3 466 0420
[info-
be@enzolifesciences.com](mailto:info-be@enzolifesciences.com)

France
Phone: +33 472 440 655
[info-
fr@enzolifesciences.com](mailto:info-fr@enzolifesciences.com)

Germany
Phone: +49 7621 5500 526
[info-
de@enzolifesciences.com](mailto:info-de@enzolifesciences.com)

UK & Ireland
Phone (UK customers):
0845 601 1488
Phone: +44 1392 825900
[info-
uk@enzolifesciences.com](mailto:info-uk@enzolifesciences.com)