

MIF polyclonal antibody

This antibody is covered by our [Worry-Free Guarantee](#).

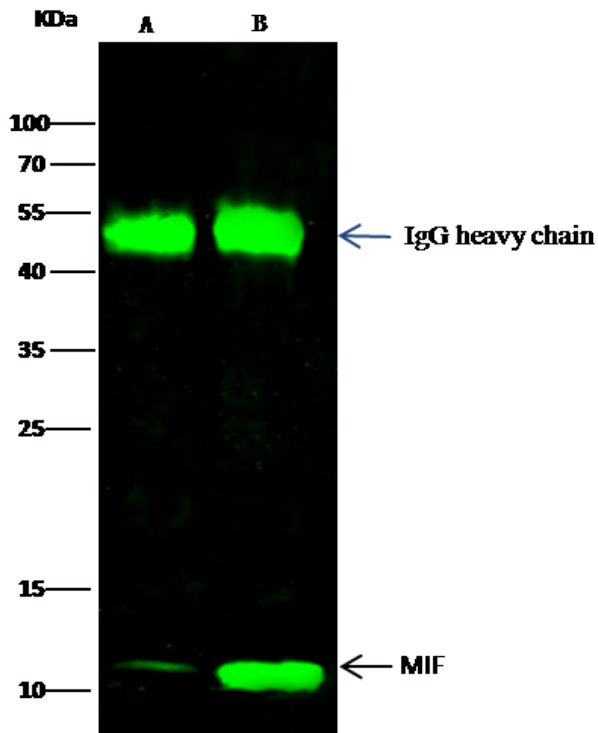
Ordering Information

[Order Online »](#)

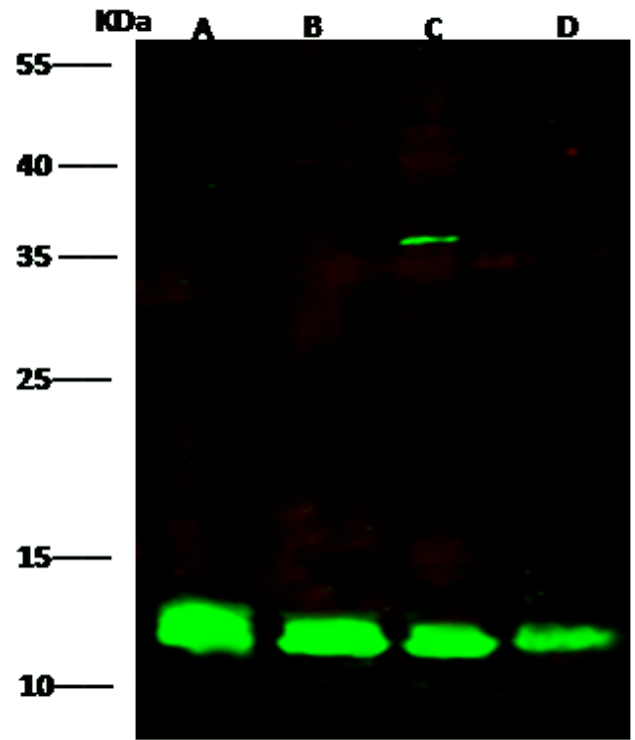
ENZ-ABS1004-0100	100µl
------------------	-------

Manuals, SDS & CofA

[View Online »](#)



Mouse MIF was immunoprecipitated using: Lane A: 0.5 mg THP-1 Whole Cell Lysate Lane B: 0.5 mg Raw264.7 Whole Cell Lysate, 2 μ L anti-Mouse MIF rabbit polyclonal antibody and 15 μ L of 50 % Protein G agarose. Primary antibody: Anti-Mouse MIF rabbit polyclonal antibody at 1:200 dilution. Secondary antibody: Dylight 800-labeled antibody to rabbit IgG (H+L), at 1:5000 dilution. Developed using the Odyssey technique. Performed under reducing conditions. Observed band size: 12 kDa



Anti-MIF rabbit polyclonal antibody at 1:500 dilution
Lane A: U937 Whole Cell Lysate Lane B: HL60 Whole Cell Lysate Lane C: Jurkat Whole Cell Lysate Lane D: Raw264.7 Whole Cell Lysate. Lysates/proteins at 30 μ g per lane. Secondary Goat Anti-Rabbit IgG H&L (Dylight800) at 1/10000 dilution. Developed using the Odyssey technique. Performed under reducing conditions. Observed band size: 12 kDa.

Handling & Storage

Handling Protected from light. Avoid freeze-thaw cycles.

Long Term Storage -20°C

Shipping Blue Ice

Regulatory Status RUO - Research Use Only

Product Details

Alternative Name Macrophage migration inhibitory factor

Application ELISA, IP, WB

Formulation Liquid. 0.2 µm filtered solution in PBS. Preservative free.

Host Rabbit

Immunogen Recombinant mouse MIF protein.

Isotype IgG

Purity Detail Protein A and antigen affinity purified.

Recommendation Dilutions/Conditions Western Blot (1:500-1:1'000)ELISA (1:5'000-1:10'000)Immunoprecipitation (4-6 µl/ml of lysate)Suggested dilutions/conditions may not be available for all applications.Optimal conditions must be determined individually for each application.

Species Reactivity Mouse

Worry-free Guarantee This antibody is covered by our [Worry-Free Guarantee](#)

Last modified: September 17, 2024



ENZO LIFE SCIENCES,
INC.
Phone: 800.942.0430
[info-
usa@enzolifesciences.com](mailto:info-usa@enzolifesciences.com)

European Sales Office
ENZO LIFE SCIENCES
(ELS) AG
Phone: +41 61 926 8989
[info-
eu@enzolifesciences.com](mailto:info-be@enzolifesciences.com)

Belgium, The Netherlands
& Luxembourg
Phone: +32 3 466 0420
[info-
be@enzolifesciences.com](mailto:info-fr@enzolifesciences.com)

France
Phone: +33 472 440 655
[info-
fr@enzolifesciences.com](mailto:info-fr@enzolifesciences.com)

Germany
Phone: +49 7621 5500 526
[info-
de@enzolifesciences.com](mailto:info-de@enzolifesciences.com)

UK & Ireland
Phone (UK customers):
0845 601 1488
Phone: +44 1392 825900
[info-
uk@enzolifesciences.com](mailto:info-uk@enzolifesciences.com)