

Mcl-1 polyclonal antibody

Mcl-1 is a member of the Bcl-2 family that possesses anti-apoptotic activity. Mcl-1 is an immediate-early gene activated by the GMCSF as well as IL-3 signaling pathways and plays an important role in the viability response of these cytokines. Similar to all Bcl-2 family members, Mcl-1 contains BH1, BH2, and BH3 domains; however, unlike other members of this family, Mcl-1 has an extended N-terminal domain rich in PEST sequences, which probably accounts for the short half-life of this protein.

This antibody is covered by our [Worry-Free Guarantee](#).

Citations: 23

[View Online »](#)

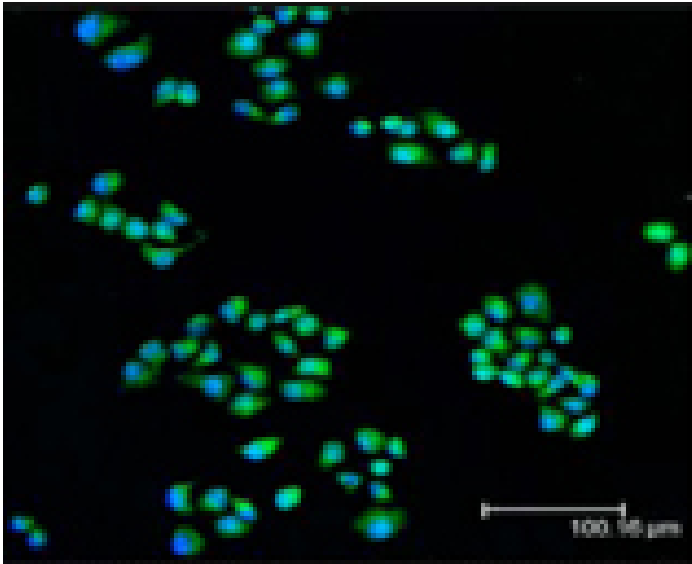
Ordering Information

[Order Online »](#)

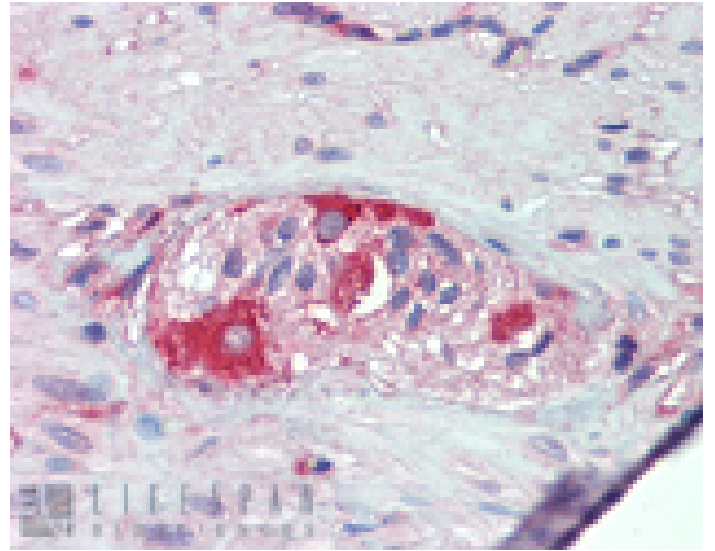
ADI-AAP-240-D	50µg
ADI-AAP-240-F	200µg

Manuals, SDS & CofA

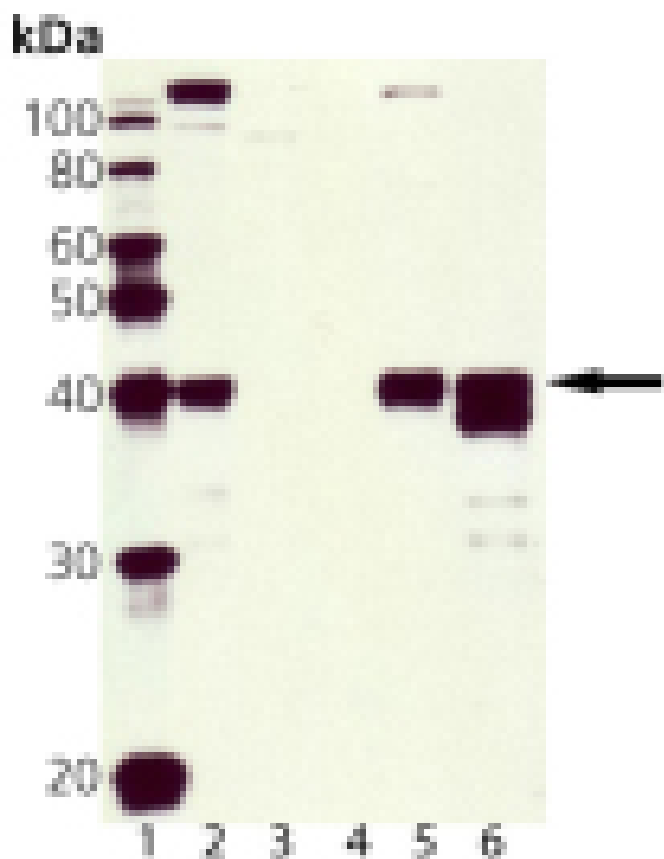
[View Online »](#)



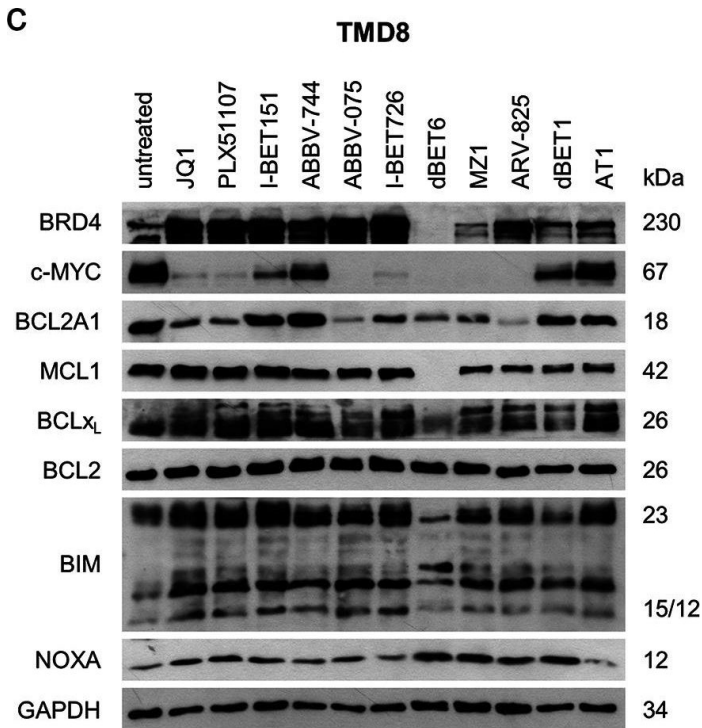
Immunofluorescent analysis (confocal) staining of HeLa cells using Mcl-1 pAb (green); nuclei are stained in blue pseudocolor using DRAQ5.



Immunohistochemistry analysis of human breast cancer tissue with Mcl-1 pAb.

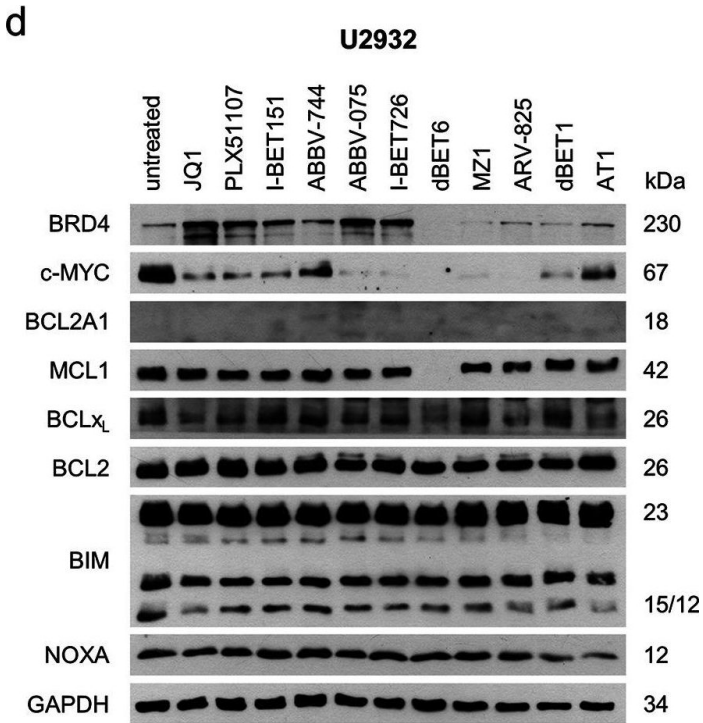


Western blot analysis of Mcl-1, pAb: Lane 1: MW marker, Lane 2: HeLa, Lane 3: 3T3, Lane 4: PC-12, Lane 5: MDCK, Lane 6: RK-13.



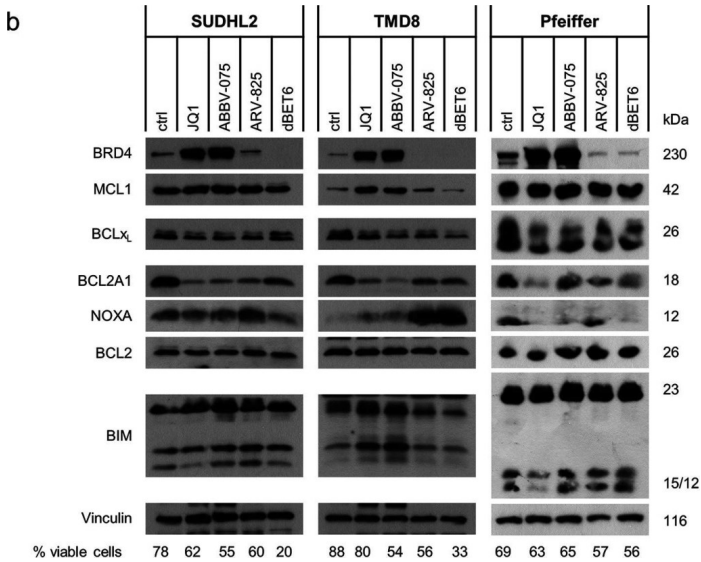
BET inhibitors/-degraders change the protein expression and induce cell death in DLBCL. a) Induction of cell death [%] after 24 h treatment with the indicated BET inhibitors/-degraders at 1 μ M measured by AnnexinV-FITC/PI staining and flow cytometry [data are shown as mean + standard deviation (SD) with n = 3]. b- d) Western Blot of BRD4, c-MYC and BCL2-family proteins after 24 h treatment with the indicated BET inhibitors/-degraders at 1 μ M in b) SUDHL2, c) TMD8 and d) U2932 cells with GAPDH serving as housekeeping control [one representative blot out of three independent experiments is shown]

Image collected and cropped by CiteAb under a CC-BY license from the following publication: Inhibition of bromodomain and extra-terminal proteins targets constitutively active NF κ B and STAT signaling in lymphoma and influences the expression of the antiapoptotic proteins BCL2A1 and c-MYC. *Cell Commun Signal* (2024)



BET inhibitors/-degraders change the protein expression and induce cell death in DLBCL. a) Induction of cell death [%] after 24 h treatment with the indicated BET inhibitors/-degraders at 1 μ M measured by AnnexinV-FITC/PI staining and flow cytometry [data are shown as mean + standard deviation (SD) with n = 3]. b-d) Western Blot of BRD4, c-MYC and BCL2-family proteins after 24 h treatment with the indicated BET inhibitors/-degraders at 1 μ M in b) SUDHL2, c) TMD8 and d) U2932 cells with GAPDH serving as housekeeping control [one representative blot out of three independent experiments is shown]

Image collected and cropped by CiteAb under a CC-BY license from the following publication: Inhibition of bromodomain and extra-terminal proteins targets constitutively active NF κ B and STAT signaling in lymphoma and influences the expression of the antiapoptotic proteins BCL2A1 and c-MYC. *Cell Commun Signal* (2024)



Viability and protein levels are influenced by selected BET inhibitors/-degraders. a) Cell viability determined by CTG assay after 48 h treatment with the indicated BET inhibitors/ degraders in ABC and CGB cell lines [data are shown as mean +/- standard deviation (SD) with n = 3]. b) Western Blot of BRD4 and BCL2 family proteins in SUDHL2, TMD8 and Pfeiffer cells treated with JQ1 [1 μ M], ABBV-075 [SUDHL2 and Pfeiffer 100nM/TMD8 300nM], ARV-825 [SUDHL2 100nM/TMD8 30nM/Pfeiffer 10 nM] and dBET6 [SUDHL2 100nM/TMD8 30nM/Pfeiffer 10 nM]. Cell viability determined by AnnexinV-FITC/PI staining and flow cytometry after 24 h incubation is indicated below the Western blot [one representative blot out of three independent experiments is shown]

Image collected and cropped by CiteAb under a CC-BY license from the following publication: Inhibition of bromodomain and extra-terminal proteins targets constitutively active NF κ B and STAT signaling in lymphoma and influences the expression of the antiapoptotic proteins BCL2A1 and c-MYC. *Cell Commun Signal* (2024)

Handling & Storage

Handling Avoid freeze/thaw cycles.

Long Term Storage -20°C

Shipping Blue Ice

Regulatory Status RUO - Research Use Only

Product Details

Alternative Name Bcl-2-like protein 3

Application IF, IHC (PS), WB

Application Notes Detects a band of ~42/43kDa by Western blot.

Formulation Liquid. In PBS containing 0.09% sodium azide.

GenBank ID L08246

Host Rabbit

Immunogen Synthetic peptide corresponding to a portion of human Mcl-1.

Purity Detail Peptide affinity purified.

Recommendation Immunohistochemistry (paraffin sections, 1:50)Western Blot (1:500-1:1,000,
Dilutions/Conditions ECL)Suggested dilutions/conditions may not be available for all applications.Optimal conditions must be determined individually for each application.

Source Purified from rabbit serum.

Species Reactivity Dog, Guinea pig, Human, Monkey, Porcine, Rabbit

UniProt ID Q07820

Worry-free Guarantee This antibody is covered by our [Worry-Free Guarantee](#).



ENZO LIFE SCIENCES,
INC.
Phone: 800.942.0430
[info-
usa@enzolifesciences.com](mailto:info-usa@enzolifesciences.com)

European Sales Office
ENZO LIFE SCIENCES
(ELS) AG
Phone: +41 61 926 8989
[info-
eu@enzolifesciences.com](mailto:info-eu@enzolifesciences.com)

Belgium, The Netherlands
& Luxembourg
Phone: +32 3 466 0420
[info-
be@enzolifesciences.com](mailto:info-be@enzolifesciences.com)

France
Phone: +33 472 440 655
[info-
fr@enzolifesciences.com](mailto:info-fr@enzolifesciences.com)

Germany
Phone: +49 7621 5500 526
[info-
de@enzolifesciences.com](mailto:info-de@enzolifesciences.com)

UK & Ireland
Phone (UK customers):
0845 601 1488
Phone: +44 1392 825900
[info-
uk@enzolifesciences.com](mailto:info-uk@enzolifesciences.com)