

# LYSO-ID<sup>®</sup> Red

## detection kit (GFP-CERTIFIED<sup>®</sup>)

### Acidic organelle-selective dye for live cell staining of lysosomes

LYSO-ID<sup>®</sup> Red Lysosomal Detection Kit (GFP-CERTIFIED<sup>®</sup>) is an ideal choice for fluorescence co-localization imaging with GFP-tagged proteins, providing spectrally pure red signal. By contrast, many red-emitting lysosomal probes photoconvert to green fluorescent species or display metachromatic artifacts wherein emission occurs both in the red and green regions of the spectrum, leading to spurious results in GFP co-localization experiments [Freundt et al (2007) Cell Res. 17(11): 956- 958; Nadrigny et al (2007) Biophys J. 93(3):969-980]. The LYSO-ID<sup>®</sup> Red Lysosomal Detection Kit (GFP-CERTIFIED<sup>®</sup>) contains a proprietary acidic organelle-selective dye suitable for staining live cells. The dye is compatible with most fluorescence detection systems, including conventional and confocal fluorescence microscopes, as well as High Content Screening (HCS) platforms. This kit is specifically designed for use with GFP-expressing cell lines, as well as cells expressing blue, cyan or yellow fluorescent proteins (BFPs, CFPs, YFPs). The LYSO-ID<sup>®</sup> Red dye has been validated for utility in live cell imaging applications, showing an appropriate response to treatment with well characterized lysosomal perturbation agents. A lysosome perturbation agent, chloroquine, is provided as a positive control for monitoring changes in lysosome number and volume. A nuclear counterstain (Hoechst 33342) is provided to highlight this organelle as well.

Citations: 43

[View Online »](#)

### Ordering Information

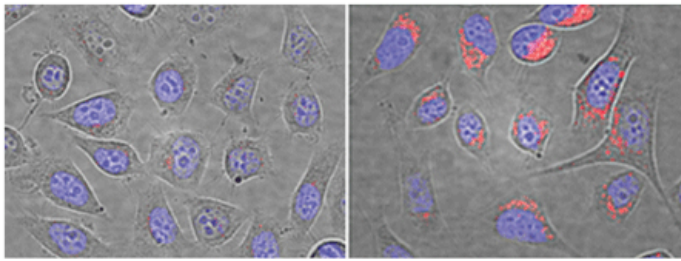
[Order Online »](#)

ENZ-51005-0100	100 tests
ENZ-51005-500	500 tests

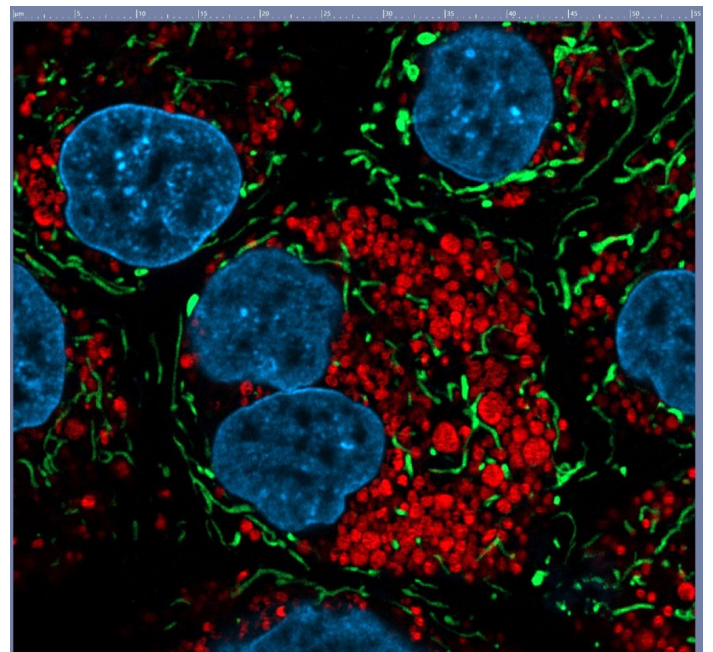
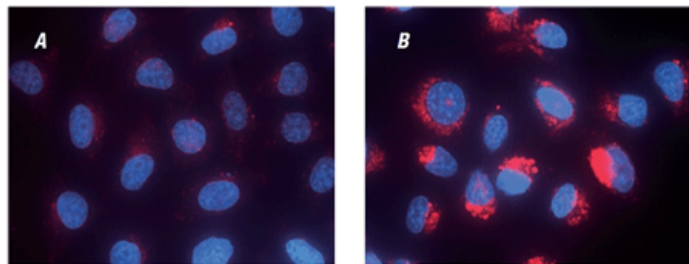
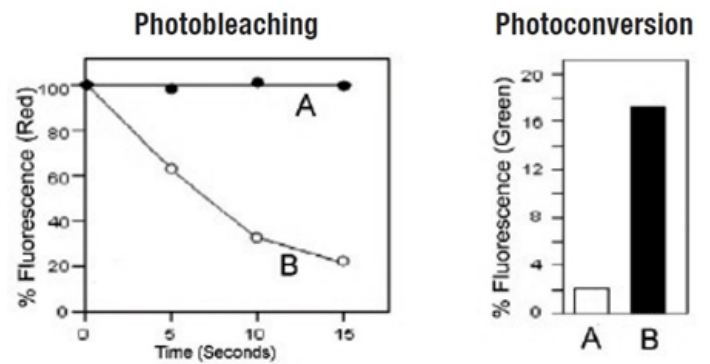
### Manuals, SDS & CofA

[View Online »](#)

- Novel acidic organelle-selective dye, suitable for live cell staining of lysosomes
- Long wavelength red emission that is easily multiplexed with common fluorescent dyes (coumarin, FITC, Cyanine 3) and fluorescent proteins (BFP, CFP, GFP, YFP)
- No photo conversion to a green emitting dye and no complicating metachromatic dual emission artifacts, facilitating analysis with GFP, FITC and other fluorescent probes
- Highly resistant to photobleaching and concentration quenching, ensuring strong, consistent fluorescence signal, even after extended viewing periods



Composite bright-field and fluorescence microscopy images of control U2OS cells (left) and cells pre-treated with 64μM Chloroquine for 5 hours (right). Cells were stained with LYSO-ID® Red dye for 10 minutes. Nuclei were counter-stained with Hoechst 33342 dye.



Live MDCK cells were co-stained with Mito-ID® Green (ENZ-51022) and LYSO-ID® Red detection kits (ENZ-51005), images were taken with 63x objective. The image is a courtesy of Dr. Randy Stout at NYIT.

# Handling & Storage

Use/Stability	With proper storage, the kit components are stable up to the date noted on the product label. Store kit at -20°C in a non-frost free freezer, or -80°C for longer term storage.
Handling	Avoid freeze/thaw cycles.
Long Term Storage	-80°C
Shipping	Dry Ice

## Regulatory Status

RUO - Research Use Only

# Product Details

Application	Fluorescence microscopy, Fluorescent detection
Application Notes	For use with GFP-expressing cell lines, as well as cells expressing blue, cyan or yellow fluorescent proteins.
Contents	LYSO-ID® Red Detection Reagent Hoechst 33342 Nuclear Staining Chloroquine Control 10X Assay Buffer
Quality Control	A sample from each lot of LYSO-ID® Red detection kit (GFP-CERTIFIED®) is used to stain HeLa cells using the procedures described in the user manual. The chloroquine-treated HeLa cells exhibit dramatic increase in lysosome-like vesicle number and volume, comparing to untreated cells, when stained with LYSO-ID® Red Detection Reagent followed by microscopy analysis.
Quantity	-500 size contains reagents for 500 assays -0100 size contains reagents for 100 assays

The LYSO-ID<sup>®</sup> red lysosomal detection kit (GFP-CERTIFIED<sup>®</sup>) is a member of the CELLESTIAL<sup>®</sup> product line, reagents and assay kits comprising fluorescent molecular probes that have been extensively benchmarked for live cell analysis applications. CELLESTIAL<sup>®</sup> reagents and kits are optimal for use in demanding imaging applications, such as confocal microscopy, flow cytometry and HCS, where consistency and reproducibility are required.,

**Cited samples:** [For an overview on cited samples please click here.](#)

**Last modified: May 29, 2024**



ENZO LIFE SCIENCES,  
INC.  
Phone: 800.942.0430  
[info-  
usa@enzolifesciences.com](mailto:info-usa@enzolifesciences.com)

European Sales Office  
ENZO LIFE SCIENCES  
(ELS) AG  
Phone: +41 61 926 8989  
[info-  
eu@enzolifesciences.com](mailto:info-eu@enzolifesciences.com)

Belgium, The Netherlands  
& Luxembourg  
Phone: +32 3 466 0420  
[info-  
be@enzolifesciences.com](mailto:info-be@enzolifesciences.com)

France  
Phone: +33 472 440 655  
[info-  
fr@enzolifesciences.com](mailto:info-fr@enzolifesciences.com)

Germany  
Phone: +49 7621 5500 526  
[info-  
de@enzolifesciences.com](mailto:info-de@enzolifesciences.com)

UK & Ireland  
Phone (UK customers):  
0845 601 1488  
Phone: +44 1392 825900  
[info-  
uk@enzolifesciences.com](mailto:info-uk@enzolifesciences.com)