

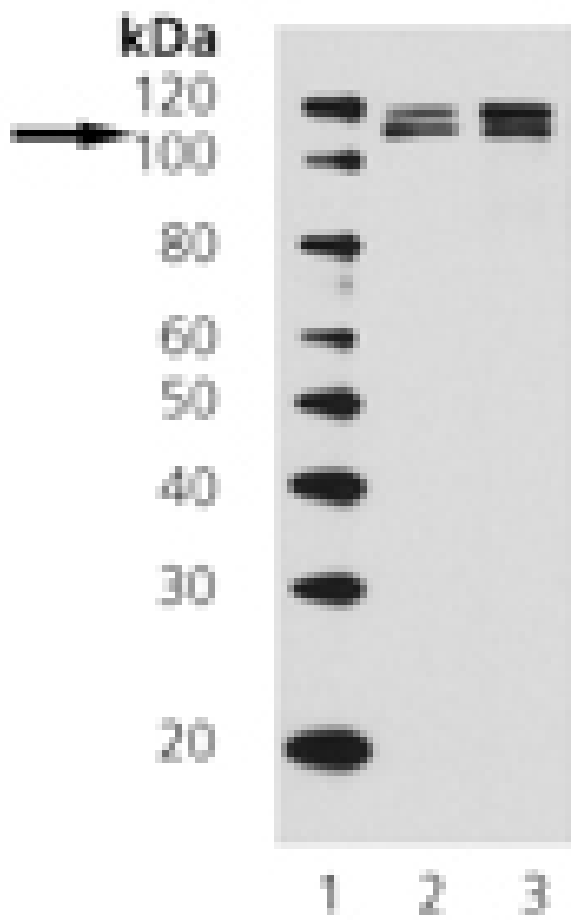
LSD1/AOF2 monoclonal antibody (1B2F2)

Lysine-specific demethylase 1 (LSD1, AOF2, BHC110) is a nuclear amine oxidase homolog, and was the first such protein to display definitive activity in epigenetic modulation as a histone demethylase. LSD1 demethylates histone H3 at mono- or di-methylated lysine residues. Depending on associated co-factors, LSD1-mediated demethylation can lead to transcriptional repression or activation.

This antibody is covered by our [Worry-Free Guarantee](#).

Manuals, SDS & CofA

[View Online »](#)



Western blot analysis of LSD1/AOF2 using HeLa and NIH/3T3 cell extracts. Lane 1: Molecular Weight Markers, Lane 2: HeLa, Lane 3: NIH/3T3.

Handling & Storage

Handling Avoid freeze/thaw cycles.

Long Term Storage -20°C

Shipping Blue Ice

Regulatory Status RUO - Research Use Only

Product Details

Application WB

Clone 1B2F2

Formulation Liquid. In PBS, pH 7.2, containing 50% glycerol and 0.09% sodium azide.

Host Mouse

Immunogen Recombinant human LSD1 truncated protein.

Isotype IgG1

Purity Detail Protein G affinity purified.

Source Purified from mouse ascites.

Species Reactivity Human, Mouse, Rat

UniProt ID O60341

Worry-free Guarantee This antibody is covered by our [Worry-Free Guarantee](#)

Last modified: May 29, 2024



ENZO LIFE SCIENCES,
INC.
Phone: 800.942.0430
[info-
usa@enzolifesciences.com](mailto:info-usa@enzolifesciences.com)

European Sales Office
ENZO LIFE SCIENCES
(ELS) AG
Phone: +41 61 926 8989
[info-
eu@enzolifesciences.com](mailto:info-eu@enzolifesciences.com)

Belgium, The Netherlands
& Luxembourg
Phone: +32 3 466 0420
[info-
fr@enzolifesciences.com](mailto:info-fr@enzolifesciences.com)

France
Phone: +33 472 440 655
[info-
de@enzolifesciences.com](mailto:info-de@enzolifesciences.com)

Germany
Phone: +49 7621 5500 526
[info-
uk@enzolifesciences.com](mailto:info-uk@enzolifesciences.com)

UK & Ireland
Phone (UK customers):
0845 601 1488
Phone: +44 1392 825900
[info-
uk@enzolifesciences.com](mailto:info-uk@enzolifesciences.com)