

# Lovastatin

## HMG-CoA reductase inhibitor

Inhibits cholesterol/isoprenoid biosynthesis by inhibition of HMG-CoA reductase ( $K_i$  for acid form is 1nM) and blocks protein isoprenylation and reduces plasma cholesterol levels in humans. Causes cells to arrest early in the G1 phase. Induces apoptosis in cancer cells.

Citations: 13

[View Online »](#)

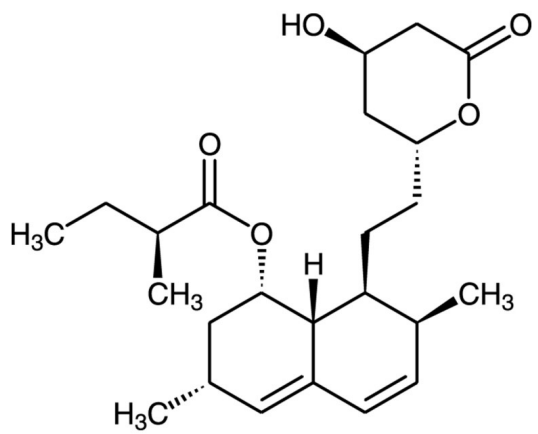
## Ordering Information

[Order Online »](#)

BML-G226-0010	10mg
---------------	------

## Manuals, SDS & CofA

[View Online »](#)



## Handling & Storage

<b>Use/Stability</b>	As indicated on product label or CoA when stored as recommended. Stable for at least 1 year after receipt when stored, as supplied, at -20°C. Stock solutions are stable for up to 3 months at -20°C.
<b>Long Term Storage</b>	-20°C
<b>Shipping</b>	Blue Ice

## Regulatory Status

RUO - Research Use Only

## Product Details

<b>Alternative Name</b>	Mevinolin, 6- $\alpha$ -Methylcompactin
<b>Appearance</b>	White solid.
<b>CAS</b>	75330-75-5
<b>Couple Target</b>	HMG-CoA reductase
<b>Couple Type</b>	Inhibitor
<b>Formula</b>	$C_{24}H_{36}O_5$
<b>MI</b>	<b>14:</b> 5586
<b>MW</b>	404.6
<b>Solubility</b>	Soluble in DMSO (>25mg/ml) or 100% ethanol (>35mg/ml); insoluble in water.

Last modified: May 29, 2024



ENZO LIFE SCIENCES,  
INC.  
Phone: 800.942.0430  
[info-  
usa@enzolifesciences.com](mailto:info-usa@enzolifesciences.com)

European Sales Office  
ENZO LIFE SCIENCES  
(ELS) AG  
Phone: +41 61 926 8989  
[info-  
eu@enzolifesciences.com](mailto:info-eu@enzolifesciences.com)

Belgium, The Netherlands  
& Luxembourg  
Phone: +32 3 466 0420  
[info-  
be@enzolifesciences.com](mailto:info-be@enzolifesciences.com)

France  
Phone: +33 472 440 655  
[info-  
fr@enzolifesciences.com](mailto:info-fr@enzolifesciences.com)

Germany  
Phone: +49 7621 5500 526  
[info-  
de@enzolifesciences.com](mailto:info-de@enzolifesciences.com)

UK & Ireland  
Phone (UK customers):  
0845 601 1488  
Phone: +44 1392 825900  
[info-  
uk@enzolifesciences.com](mailto:info-uk@enzolifesciences.com)