

Leptin receptor polyclonal antibody

This antibody is covered by our [Worry-Free Guarantee](#).

Citations: 1

[View Online »](#)

Ordering Information

[Order Online »](#)

ALX-210-168-R100	100µl
------------------	-------

Manuals, SDS & CofA

[View Online »](#)

125 kDa-

100 kDa-

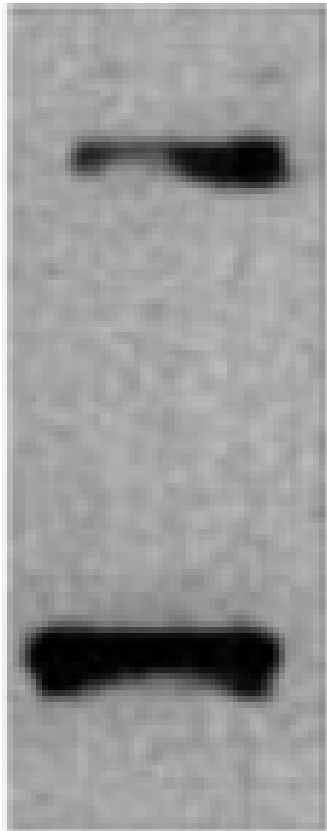


Figure: Western blot of both short and long forms of leptin receptor on mouse lung tissue extract using PAb to Leptin Receptor ([ALX-210-168](#)).¹⁶⁹, Leptin receptor polyclonal antibody Western blot, Leptin receptor polyclonal antibody Western blot, yes ALX-210-169, 210-169.gif, <http://static.enzolifesciences.com/fileadmin/files/image/210-169.gif>, **Figure:** Immunolocalization of IP₃R-I in rat cerebellum using PAb to Inositol 1

Handling & Storage

Handling Avoid freeze/thaw cycles.

Long Term Storage -20°C

Shipping Blue Ice

Regulatory Status RUO - Research Use Only

Product Details

Alternative Name OB-R, CD295

Application WB

Application Notes Detects bands of ~100kDa and ~125kDa by Western blot, representing the short and long forms of leptin receptor. Also detects two unrelated bands of ~31kDa and ~35kDa.

Formulation Liquid. In PBS containing 0.05% sodium azide.

Host Rabbit

Immunogen Synthetic peptide corresponding to aa 577-594 (K577EIQWKTHEVFDAKSKSA594) of the extracellular domain of rat leptin receptor.

Purity Detail Purified IgG.

Recommendation Dilutions/Conditions Western Blot (1:2,000) Suggested dilutions/conditions may not be available for all applications. Optimal conditions must be determined individually for each application.

Species Reactivity Human, Mouse, Rat

UniProt ID Q62959

Worry-free Guarantee This antibody is covered by our [Worry-Free Guarantee](#)



ENZO LIFE SCIENCES,
INC.
Phone: 800.942.0430
[info-](mailto:info-usa@enzolifesciences.com)
[usa@enzolifesciences.com](mailto:info-usa@enzolifesciences.com)

European Sales Office
ENZO LIFE SCIENCES
(ELS) AG
Phone: +41 61 926 8989
[info-](mailto:info-eu@enzolifesciences.com)
[eu@enzolifesciences.com](mailto:info-eu@enzolifesciences.com)

Belgium, The Netherlands
& Luxembourg
Phone: +32 3 466 0420
[info-](mailto:info-fr@enzolifesciences.com)
[fr@enzolifesciences.com](mailto:info-fr@enzolifesciences.com)

France
Phone: +33 472 440 655
[info-](mailto:info-fr@enzolifesciences.com)
[fr@enzolifesciences.com](mailto:info-fr@enzolifesciences.com)

Germany
Phone: +49 7621 5500 526
[info-](mailto:info-de@enzolifesciences.com)
[de@enzolifesciences.com](mailto:info-de@enzolifesciences.com)

UK & Ireland
Phone (UK customers):
0845 601 1488
Phone: +44 1392 825900
[info-](mailto:info-uk@enzolifesciences.com)
[uk@enzolifesciences.com](mailto:info-uk@enzolifesciences.com)

Last modified: May 29, 2024