

LC3B monoclonal antibody (2G6)

Autophagy is an alternative process of proteasomal degradation for some long-lived proteins or organelles. Alterations in the autophagic-lysosomal compartment have been linked to neuronal death in many neurodegenerative disorders as well as in transmissible neuronal pathologies (prion diseases). Genetic studies in yeast have shown that Autophagy-defective Gene-8 (Atg-8) represents a specific marker for autophagy. Among the four families of mammalian Atg8-related proteins only LC3 (Microtubule-associated Protein1 Light Chain 3) is expressed at sufficient high levels and efficiently recruited to autophagic vesicles in cells and tissues. During autophagy the cytoplasmic form, LC3-I is processed and recruited to autophagosomes, where LC3-II is generated by site specific proteolysis near to the C-terminus. Autophagic vacuoles have been also reported frequently in cardiomyopathies or muscle cells exposed to different experimental settings.

This antibody is covered by our [Worry-Free Guarantee](#).

Citations: 6

[View Online »](#)

Ordering Information

[Order Online »](#)

ALX-803-081-C100

100µg

Manuals, SDS & CofA

[View Online »](#)

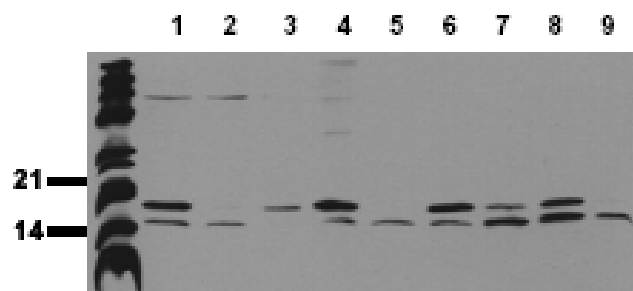


Figure: Western blot analysis of endogenous LC3 using MAb to LC3B (Prod. No. ALX-803-081). **Method:** Whole cell lysates of untreated tumor cells were applied to SDS-PAGE and transferred to a PVDF membrane. The immunoblot was probed with Monoclonal Antibody to LC3 (2G6) (Prod. No. ALX-803-081) (0.5 $\mu\text{g}/\text{ml}$) for 1h at RT and developed by ECL (exposure time: 30 sec).

Lane 1: HeLa Lane 2: HepG2 Lane 3: HEK 293 Lane 4: SH-SY5Y Lane 5: MDCK Lane 6: PC12 Lane 7: CMT Lane 8: Neuro2A Lane 9: NIH – 3T

Handling & Storage

Use/Stability	Stable at -20°C up to 1 year.
Handling	Avoid freeze/thaw cycles.
Long Term Storage	-20°C
Shipping	Blue Ice

Regulatory Status

RUO - Research Use Only

Product Details

Alternative Name	Microtubule-associated protein 1 light chain 3B, MAP1LC3B
Application	ICC, WB
Application Notes	Detects a band of ~18kDa (LC3B-I; cytoplasmic form) and a band of ~16kDa (LC3B-II; lipidated form) by Western blot.
Clone	2G6
Formulation	Liquid. In PBS containing 50% glycerol, 0.09% sodium azide, PEG and sucrose.
Host	Mouse
Immunogen	Synthetic peptide corresponding to the N-terminus of LC3B conjugated to hemocyanin.
Isotype	IgG1
Positive Control	Included. (Prod. No. ALX-840-038)
Purity Detail	Thiophilic adsorption and size exclusion chromatography purified.
Recommendation Dilutions/Conditions	Immunocytochemistry (paraformaldehyde/methanol fixed cells; 1-10 µg/ml)Western Blot (0.5µg/ml for HRPO/ECL detection; recommended blocking buffer CPPT: 10mM TRIS-HCl, pH 7.4, 0.5% (w/v) casein, 1% (w/v) PEG 4000, 1% (w/v) polyvinylpyrrolidone, 0.1% (v/v) Tween 20, 150mM sodium chloride)We strongly recommend to use PVDF membranes for immunoblot analysis.Suggested dilutions/conditions may not be available for all applications.Optimal conditions must be determined individually for each application.
Species Reactivity	Hamster, Human, Monkey, Mouse, Rat

Specificity	Recognizes both forms of endogenous LC3B.
UniProt ID	Q9GZQ8
Worry-free Guarantee	This antibody is covered by our Worry-Free Guarantee .



ENZO LIFE SCIENCES,
INC.
Phone: 800.942.0430
[info-
usa@enzolifesciences.com](mailto:info-usa@enzolifesciences.com)

European Sales Office
ENZO LIFE SCIENCES
(ELS) AG
Phone: +41 61 926 8989
[info-
eu@enzolifesciences.com](mailto:info-eu@enzolifesciences.com)

Belgium, The Netherlands
& Luxembourg
Phone: +32 3 466 0420
[info-
be@enzolifesciences.com](mailto:info-be@enzolifesciences.com)

France
Phone: +33 472 440 655
[info-
fr@enzolifesciences.com](mailto:info-fr@enzolifesciences.com)

Germany
Phone: +49 7621 5500 526
[info-
de@enzolifesciences.com](mailto:info-de@enzolifesciences.com)

UK & Ireland
Phone (UK customers):
0845 601 1488
Phone: +44 1392 825900
[info-
uk@enzolifesciences.com](mailto:info-uk@enzolifesciences.com)