

LAMP3 (human) monoclonal antibody (104G4) (Alexa Fluor[®] 647)

This antibody is covered by our [Worry-Free Guarantee](#).

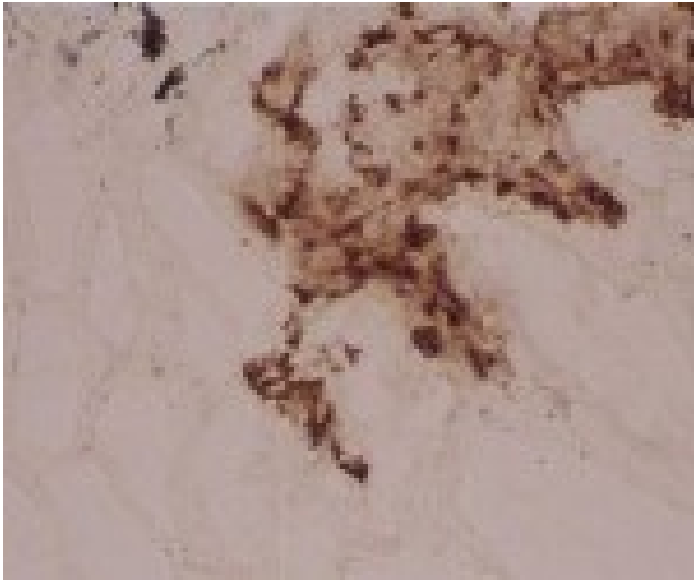
Ordering Information

[Order Online »](#)

ENZ-ABS198-0100	100µg
-----------------	-------

Manuals, SDS & CofA

[View Online »](#)



Immunohistochemistry analysis of human lung frozen section with LAMP3 (human) mAb, clone 104G4.

Handling & Storage

Short Term Storage -20°C

Long Term Storage -80°C

Shipping Blue Ice

Regulatory Status RUO - Research Use Only

Product Details

Alternative Name CD208, Lysosome-associated membrane glycoprotein 3, DC LAMP, Protein TSC403

Application Flow Cytometry, IHC (FS)

Clone 104G4

Formulation Liquid. In PBS containing 50% glycerol.

Host Mouse

Immunogen Human DC-LAMP alkaline phosphatase fusion protein.

Isotype IgG1

Purity Detail Purified using QMA Hyper D ion exchange chromatography

Recommendation Dilutions/Conditions Flow Cytometry (intracellular) Suggested dilutions/conditions may not be available for all applications. Optimal conditions must be determined individually for each application.

Species Reactivity Human, Sheep

Specificity Recognizes an epitope in the intracytoplasmic domain of DC-LAMP.

UniProt ID Q9UQV4

Worry-free Guarantee This antibody is covered by our [Worry-Free Guarantee](#).



ENZO LIFE SCIENCES,
INC.
Phone: 800.942.0430
[info-
usa@enzolifesciences.com](mailto:info-usa@enzolifesciences.com)

European Sales Office
ENZO LIFE SCIENCES
(ELS) AG
Phone: +41 61 926 8989
[info-
eu@enzolifesciences.com](mailto:info-eu@enzolifesciences.com)

Belgium, The Netherlands
& Luxembourg
Phone: +32 3 466 0420
[info-
be@enzolifesciences.com](mailto:info-be@enzolifesciences.com)

France
Phone: +33 472 440 655
[info-
fr@enzolifesciences.com](mailto:info-fr@enzolifesciences.com)

Germany
Phone: +49 7621 5500 526
[info-
de@enzolifesciences.com](mailto:info-de@enzolifesciences.com)

UK & Ireland
Phone (UK customers):
0845 601 1488
Phone: +44 1392 825900
[info-
uk@enzolifesciences.com](mailto:info-uk@enzolifesciences.com)