

LAMP2 polyclonal antibody

Lysosome-associated membrane proteins (LAMP1 and LAMP2) are type I integral membrane protein that are transported from the trans-Golgi network to endosomes and then lysosomes. Following activation of platelets, T-cells, neutrophils, or endothelium, LAMP1 and LAMP2 are expressed on the cell surface. Cell surface LAMP1 and LAMP2 have been shown to promote adhesion of human peripheral blood mononuclear cells (PBMC) to vascular endothelium, and loss of LAMP2 expression is associated with impaired autophagy observed in Danons disease.

This antibody is covered by our [Worry-Free Guarantee](#).

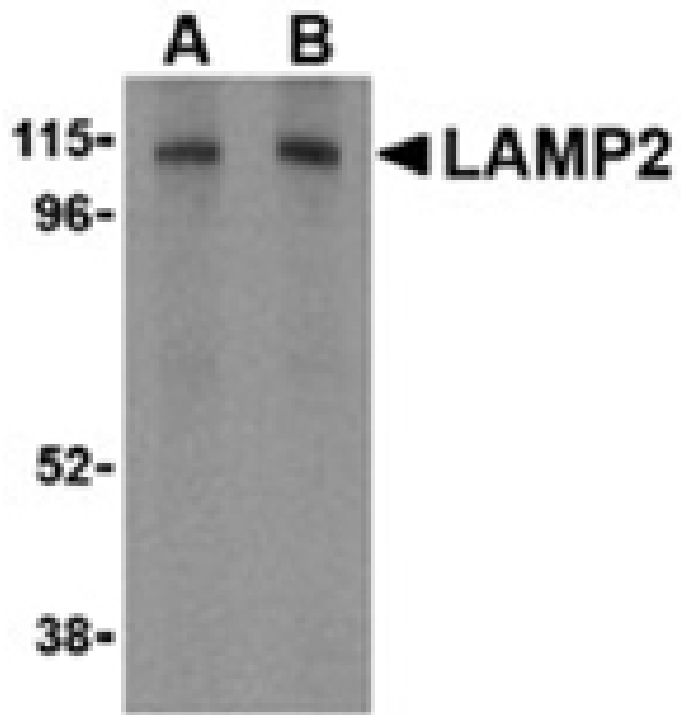
Ordering Information

[Order Online »](#)

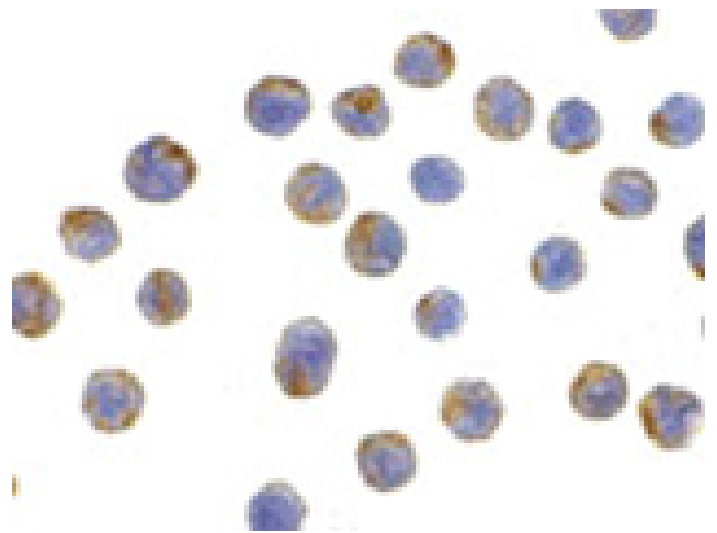
ADI-905-723-100	100µg
-----------------	-------

Manuals, SDS & CofA

[View Online »](#)



Western blot analysis of LAMP-2 in HepG2 cell lysate with LAMP-2 antibody at (A) 1 and (B) 2 μ g/ml.



Immunocytochemistry analysis of LAMP-2 in HepG2 cells with LAMP-2 antibody at 10 μ g/ml.

Handling & Storage

Long Term Storage -20°C

Shipping Blue Ice

Regulatory Status

RUO - Research Use Only

Product Details

Alternative Name	Lysosomal-associated membrane protein 2
Application	ICC, WB
Formulation	Liquid. In PBS containing 0.02% sodium azide.
Host	Rabbit
Immunogen	Synthetic peptide corresponding to the sequence near the C-terminus of human LAMP2.
Purity Detail	Peptide affinity purified.
Species Reactivity	Human, Mouse
UniProt ID	P13473
Worry-free Guarantee	This antibody is covered by our Worry-Free Guarantee .

Last modified: May 29, 2024



ENZO LIFE SCIENCES,
INC.
Phone: 800.942.0430
info-usa@enzolifesciences.com

European Sales Office
ENZO LIFE SCIENCES
(ELS) AG
Phone: +41 61 926 8989
info-eu@enzolifesciences.com

Belgium, The Netherlands
& Luxembourg
Phone: +32 3 466 0420
info-be@enzolifesciences.com

France
Phone: +33 472 440 655
info-fr@enzolifesciences.com

Germany
Phone: +49 7621 5500 526
info-de@enzolifesciences.com

UK & Ireland
Phone (UK customers):
0845 601 1488
Phone: +44 1392 825900
info-uk@enzolifesciences.com