

# LAMP2 monoclonal antibody (GL2A7)

Lysosome-associated membrane proteins (LAMP1 and LAMP2) are type I integral membrane protein that are transported from the trans-Golgi network to endosomes and then lysosomes. Following activation of platelets, T-cells, neutrophils, or endothelium, LAMP1 and LAMP2 are expressed on the cell surface. Cell surface LAMP1 and LAMP2 have been shown to promote adhesion of human peripheral blood mononuclear cells (PBMC) to vascular endothelium, and loss of LAMP2 expression is associated with impaired autophagy observed in Danons disease.

This antibody is covered by our [Worry-Free Guarantee](#).

Citations: 3

[View Online »](#)

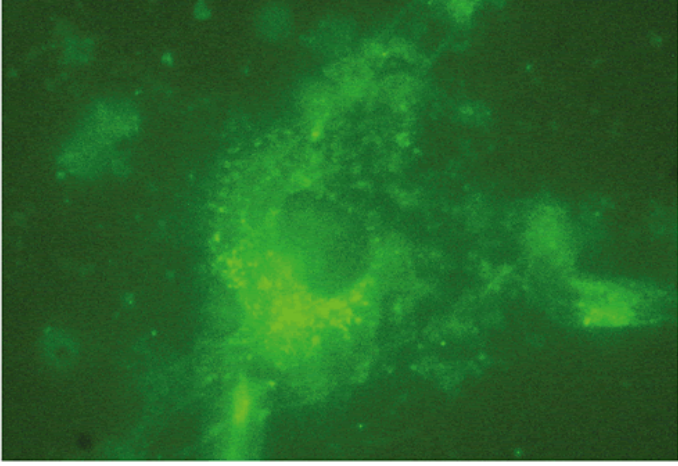
## Ordering Information

[Order Online »](#)

ADI-VAM-EN003-D	50µl
ADI-VAM-EN003-F	200µl

Manuals, SDS & CofA

[View Online »](#)



Mouse astrocytes stained with VAM-EN003. Cells were fixed using 4% paraformaldehyde and permeabilized using 0.01% saponin.

## Handling & Storage

**Handling** Avoid freeze/thaw cycles.

**Long Term Storage** -20°C

**Shipping** Blue Ice

**Regulatory Status** RUO - Research Use Only

## Product Details

**Alternative Name** Lysosomal-associated membrane protein 2

**Application** ICC, IP, WB

**Clone** GL2A7

**Formulation** Liquid. Rat Ascites.

**GenBank ID** J05287

**Host** Rat

**Immunogen** Mouse liver lysosomal membrane preparation.

**Isotype** IgG

**Recommendation Dilutions/Conditions** Immunocytochemistry (1:100) Suggested dilutions/conditions may not be available for all applications. Optimal conditions must be determined individually for each application.

**Source** Purified from ascites.

**Species Reactivity** Mouse, Rabbit

**UniProt ID** P17047

**Worry-free Guarantee** This antibody is covered by our [Worry-Free Guarantee](#).



ENZO LIFE SCIENCES,  
INC.  
Phone: 800.942.0430  
[info-  
usa@enzolifesciences.com](mailto:info-usa@enzolifesciences.com)

European Sales Office  
ENZO LIFE SCIENCES  
(ELS) AG  
Phone: +41 61 926 8989  
[info-  
eu@enzolifesciences.com](mailto:info-eu@enzolifesciences.com)

Belgium, The Netherlands  
& Luxembourg  
Phone: +32 3 466 0420  
[info-  
be@enzolifesciences.com](mailto:info-be@enzolifesciences.com)

France  
Phone: +33 472 440 655  
[info-  
fr@enzolifesciences.com](mailto:info-fr@enzolifesciences.com)

Germany  
Phone: +49 7621 5500 526  
[info-  
de@enzolifesciences.com](mailto:info-de@enzolifesciences.com)

UK & Ireland  
Phone (UK customers):  
0845 601 1488  
Phone: +44 1392 825900  
[info-  
uk@enzolifesciences.com](mailto:info-uk@enzolifesciences.com)