

LAG-3 (human) monoclonal antibody (17B4) (ATTO 488 conjugate)

The lymphocyte activation gene-3 (LAG-3, CD223), a member of the immunoglobulin superfamily (IgSF) related to CD4, binds to the major histocompatibility complex (MHC) class II molecules but with higher affinity than CD4. Several alternative mRNA splice-variants of human LAG-3 have been described, two of them encoding potential secreted forms: LAG-3V1 (i.e. the D1-D2 domains of the protein, 36 kDa) and LAG-3V3 (D1-D3, 52 kDa). The longer form was detected by ELISA in the serum of healthy individuals as well as of tuberculosis patients with a favorable outcome. LAG-3 expression by T cell clones correlated with IFN- γ production, and hence soluble LAG-3 has been suggested as a serological marker of Th1 responses.

This antibody is covered by our [Worry-Free Guarantee](#).

Citations: 11

[View Online »](#)

Ordering Information

[Order Online »](#)

ALX-804-806TD-T100	ATTO 488 - 100 tests
--------------------	----------------------

Manuals, SDS & CofA

[View Online »](#)

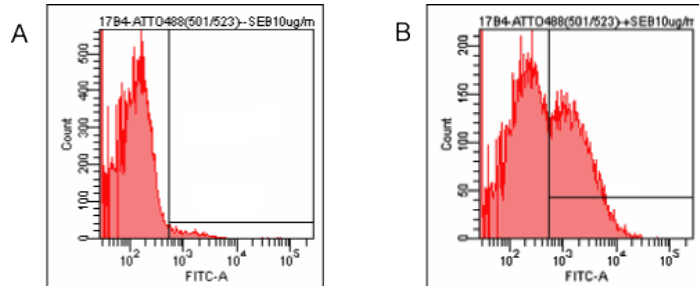


Figure: Detection of endogenous human LAG-3 by FACS analysis using LAG-3 (human), mAb (17B4) (ATTO 488) (Prod. No. ALX-804-806TD). **Method:** Human PBMC were stimulated (B) or not (A) with $1\mu\text{g}/\text{ml}$ of superantigen SEB. After 2 days, PBMC were stained with $10\mu\text{g}/\text{ml}$ ($1\mu\text{g}/0.5 \times 10^6$ cells) of LAG-3 (human), mAb (17B4) (ATTO 488) (Prod. No. ALX-804-806TD) and analyzed by flow cytometry.

Handling & Storage

Use/Stability	Stable for at least 6 months after receipt when stored as recommended.
Handling	Avoid vigorous centrifugation and vortexing. Do not freeze. Protect from light.
Short Term Storage	+4°C
Long Term Storage	+4°C
Shipping	Blue Ice

Regulatory Status

RUO - Research Use Only

Product Details

Alternative Name	Lymphocyte activation gene-3, FDC protein, CD223
Application	Flow Cytometry, ICC
Clone	17B4
Formulation	Liquid. In PBS containing 0.1M sodium bicarbonate, 50mM Tris, 1% BSA and 0.02% sodium azide.
Host	Mouse
Immunogen	Synthetic peptide corresponding to 30 aa (GPPAAAPGHPLAPGPHPAAPSSWGPRPRRY) from the first N-terminal D1 domain of human LAG-3 (lymphocyte activation gene-3).
Isotype	IgG1
Purity Detail	Purified from concentrated hybridoma tissue culture supernatant by Protein A Sepharose™ CL-4B Flow Fast Column.
Recommendation Dilutions/Conditions	Flow Cytometry (1:100)Suggested dilutions/conditions may not be available for all applications.Optimal conditions must be determined individually for each application.
Source	Purified from hybridoma tissue culture supernatant.

Species Reactivity

Human

Specificity

Recognizes the 30 aa extra-loop of the first N-terminal D1 domain of LAG-3.

Technical Info / Product Notes

1 test means: 1µl of MAb is used to stain 500'000 cells in a sample volume of 50µl.

ATTO-fluorescent antibodies show increased photostability, outstanding brightness and intense signals. ATTO dyes are thermally stable, resistant to environmental changes and show no significant isomerization. ATTO 488 shows bright green fluorescence (λabs (max): 501nm, λem (max): 523nm, εmax: 90'000).

SEPHAROSE is a trademark of GE Healthcare companies.

UniProt ID

P18627

Worry-free Guarantee

This antibody is covered by our [Worry-Free Guarantee](#)

.

Last modified: May 29, 2024



ENZO LIFE SCIENCES,
INC.
Phone: 800.942.0430
[info-
usa@enzolifesciences.com](mailto:info-usa@enzolifesciences.com)

European Sales Office
ENZO LIFE SCIENCES
(ELS) AG
Phone: +41 61 926 8989
[info-
eu@enzolifesciences.com](mailto:info-eu@enzolifesciences.com)

Belgium, The Netherlands
& Luxembourg
Phone: +32 3 466 0420
[info-
be@enzolifesciences.com](mailto:info-be@enzolifesciences.com)

France
Phone: +33 472 440 655
[info-
fr@enzolifesciences.com](mailto:info-fr@enzolifesciences.com)

Germany
Phone: +49 7621 5500 526
[info-
de@enzolifesciences.com](mailto:info-de@enzolifesciences.com)

UK & Ireland
Phone (UK customers):
0845 601 1488
Phone: +44 1392 825900
[info-
uk@enzolifesciences.com](mailto:info-uk@enzolifesciences.com)