

# LAG-3 (human) monoclonal antibody (11E3)

The lymphocyte activation gene-3 (LAG-3, CD223), a member of the immunoglobulin superfamily (IgSF) related to CD4, binds to the major histocompatibility complex (MHC) class II molecules but with higher affinity than CD4. Several alternative mRNA splice-variants of human LAG-3 have been described, two of them encoding potential secreted forms: LAG-3V1 (i.e. the D1-D2 domains of the protein, 36 kDa) and LAG-3V3 (D1-D3, 52 kDa). The longer form was detected by ELISA in the serum of healthy individuals as well as of tuberculosis patients with a favorable outcome. LAG-3 expression by T cell clones correlated with IFN- $\gamma$  production, and hence soluble LAG-3 has been suggested as a serological marker of Th1 responses.

This antibody is covered by our [Worry-Free Guarantee](#).

Citations: 4

[View Online »](#)

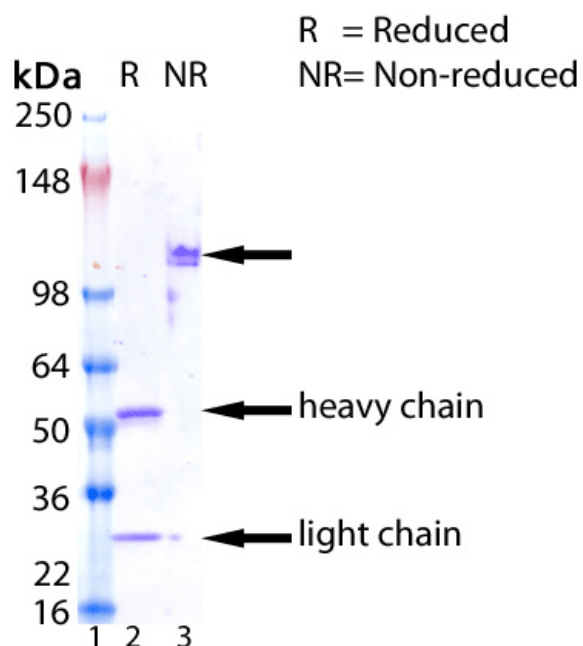
## Ordering Information

[Order Online »](#)

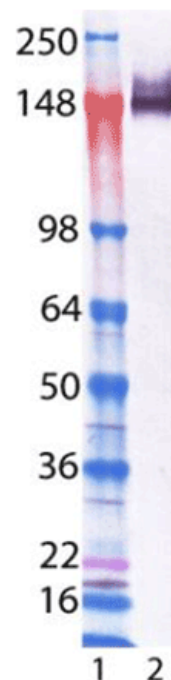
ALX-804-805-C100	100 $\mu$ g
------------------	-------------

## Manuals, SDS & CofA

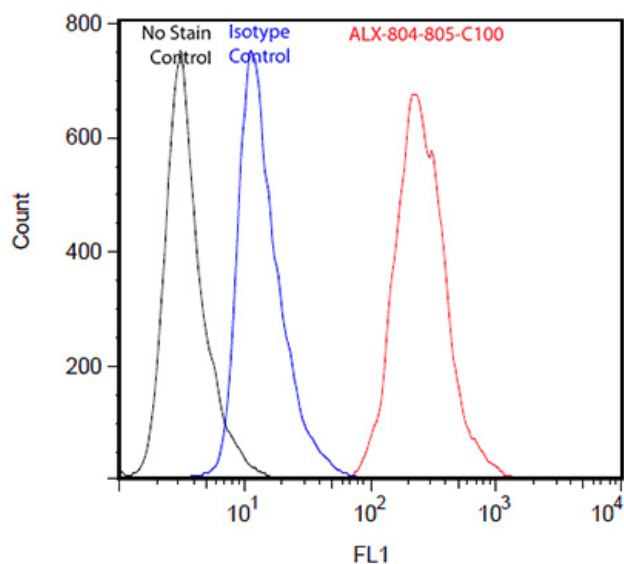
[View Online »](#)



SDS-PAGE analysis of ALX-804-805: Lane 1: MW Marker, Lane 2 and Lane 3: 2 $\mu$ g of LAG-3 (human) monoclonal antibody (11E3), resolved under reduced and non-reduced condition.



Western blot analysis of LAG-3 mAb (11E3) (Prod. No. ALX-804-805): Lane 1: MW marker, Lane 2: LAG-3 (human):Fc (human), (recombinant) (Prod. No. ALX-522-078).



Flow cytometry analysis of 10<sup>6</sup> MCF-7 cells stained using LAG-3 (human) monoclonal antibody (11E3), (Prod. No. ALX-804-805), at a concentration of 50 $\mu$ g/mL.

## Handling & Storage

Handling	Avoid freeze/thaw cycles.
Short Term Storage	+4°C
Long Term Storage	-20°C
Shipping	Blue Ice

## Regulatory Status

RUO - Research Use Only

## Product Details

Alternative Name	Lymphocyte activation gene-3, FDC protein, CD223
Application	ELISA, Flow Cytometry, FUNC, ICC, IHC (FS), IP, WB
Clone	11E3
Formulation	Liquid. In PBS containing 10% glycerol and 0.02% sodium azide.
Host	Mouse
Immunogen	Recombinant human LAG-3 (lymphocyte activation gene-3).
Isotype	IgG1
Recommendation Dilutions/Conditions	ELISA (capture)Immunoprecipitation (10µg/ml)Western Blot (5µg/ml)Suggested dilutions/conditions may not be available for all applications.Optimal conditions must be determined individually for each application.
Source	Purified from the hybridoma culture supernatant by Protein G Fast Flow Column.
Species Reactivity	Human, Monkey
Specificity	Recognizes the first N-terminal D1 domain of LAG-3.
UniProt ID	P18627



ENZO LIFE SCIENCES,  
Phone: 800.942.0430  
[info-usa@enzolifesciences.com](mailto:info-usa@enzolifesciences.com)

European Sales Office  
(ELS) AG  
Phone: +41 61 926 8989  
[info-eu@enzolifesciences.com](mailto:info-eu@enzolifesciences.com)

Belgium, The Netherlands  
Phone: +32 3 466 0420  
[info-be@enzolifesciences.com](mailto:info-be@enzolifesciences.com)

France  
Phone: +33 1 46 42 44 555  
[info-fr@enzolifesciences.com](mailto:info-fr@enzolifesciences.com)

Germany  
Phone: +49 7621 5500 526  
[info-de@enzolifesciences.com](mailto:info-de@enzolifesciences.com)

UK & Ireland  
Phone (UK customers):  
0845 601 1488  
Phone: +44 1392 825900  
[info-uk@enzolifesciences.com](mailto:info-uk@enzolifesciences.com)

This antibody is covered by our **Worry Free Guarantee**