

KDEL receptor monoclonal antibody (KR-10)

The tetrapeptide KDEL, located at the carboxy-terminal sequences of luminal proteins, is a retrieval motif essential for the precise sorting of these proteins along the secretory pathway. KDEL proteins perform essential functions in the endoplasmic reticulum (ER) related to protein folding as well as assembly. The localization of chaperones and other soluble proteins to the ER is achieved by their continuous retrieval from post-ER compartments by the KDEL receptor (Erd2p), which is a membrane protein localized in the Golgi apparatus.

This antibody is covered by our [Worry-Free Guarantee](#).

Citations: 7

[View Online »](#)

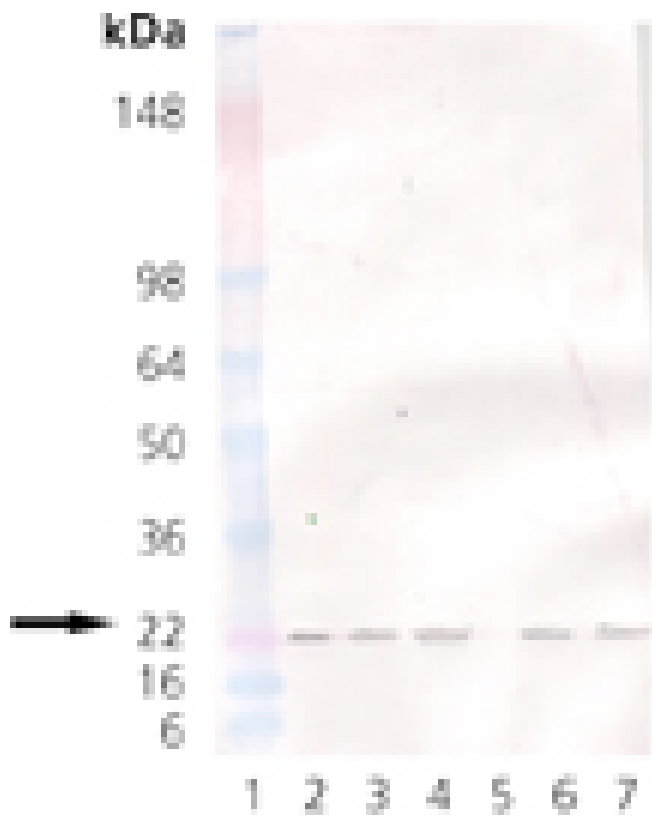
Ordering Information

[Order Online »](#)

ADI-VAA-PT048-D	50µl
ADI-VAA-PT048-F	200µl

Manuals, SDS & CofA

[View Online »](#)



Western blot analysis: Lane 1: MW marker, Lane 2: 20 μ g of HeLa cell lysate (heat shocked), Lane 3: 20 μ g of 3T3 cell lysate, Lane 4: 20 μ g of PC-12 cell lysate, Lane 5: 20 μ g of CHO-K1 cell lysate, Lane 6: 20 μ g of 3T3 cell lysate (heat shocked), Lane 7: 20 μ g of PC-12 cell lysate (heat shocked) probed with KDEL Receptor mAb at 1:250.

Handling	Avoid freeze/thaw cycles.
Long Term Storage	-20°C
Shipping	Blue Ice

Product Details

Alternative Name	Lys-Asp-Glu-Leu, Lysine-aspartic acid-glutamate-leucine
Application	IHC, WB
Application Notes	Detects a band of ~23kDa by Western blot.
Clone	KR-10
Formulation	Liquid. Mouse ascites fluid containing 0.09% sodium azide.
Host	Mouse
Immunogen	Synthetic peptide corresponding to a portion of bovine KDEL Receptor.
Isotype	IgG1
Purity Detail	Ascites.
Recommendation Dilutions/Conditions	Western Blot (1:250, colorimetric)Suggested dilutions/conditions may not be available for all applications.Optimal conditions must be determined individually for each application.
Source	Purified from mouse ascites.
Species Reactivity	Human, Mouse, Rat
Technical Info / Product Notes	Recommended by the Human Protein Atlas Organization for IHC (Ensembl No. ENSG00000105438).

UniProt ID

P33946 (KDEL1), Q2KJ37 (KDEL2)

Worry-free Guarantee

This antibody is covered by our [Worry-Free Guarantee](#)

Last modified: May 29, 2024



ENZO LIFE SCIENCES,
INC.
Phone: 800.942.0430
[info-
usa@enzolifesciences.com](mailto:info-usa@enzolifesciences.com)

European Sales Office
ENZO LIFE SCIENCES
(ELS) AG
Phone: +41 61 926 8989
[info-
eu@enzolifesciences.com](mailto:info-eu@enzolifesciences.com)

Belgium, The Netherlands
& Luxembourg
Phone: +32 3 466 0420
[info-
be@enzolifesciences.com](mailto:info-be@enzolifesciences.com)

France
Phone: +33 472 440 655
[info-
fr@enzolifesciences.com](mailto:info-fr@enzolifesciences.com)

Germany
Phone: +49 7621 5500 526
[info-
de@enzolifesciences.com](mailto:info-de@enzolifesciences.com)

UK & Ireland
Phone (UK customers):
0845 601 1488
Phone: +44 1392 825900
[info-
uk@enzolifesciences.com](mailto:info-uk@enzolifesciences.com)