

KDEL monoclonal antibody (10C3) (DyLight™ 488 conjugate)

The tetrapeptide KDEL, located at the carboxy-terminal sequences of luminal proteins, is a retrieval motif essential for the precise sorting of these proteins along the secretory pathway. KDEL proteins perform essential functions in the endoplasmic reticulum (ER) related to protein folding as well as assembly. The localization of chaperones and other soluble proteins to the ER is achieved by their continuous retrieval from post-ER compartments by the KDEL receptor (Erd2p), which is a membrane protein localized in the Golgi apparatus.

This antibody is covered by our [Worry-Free Guarantee](#).

Citations: 1

[View Online »](#)

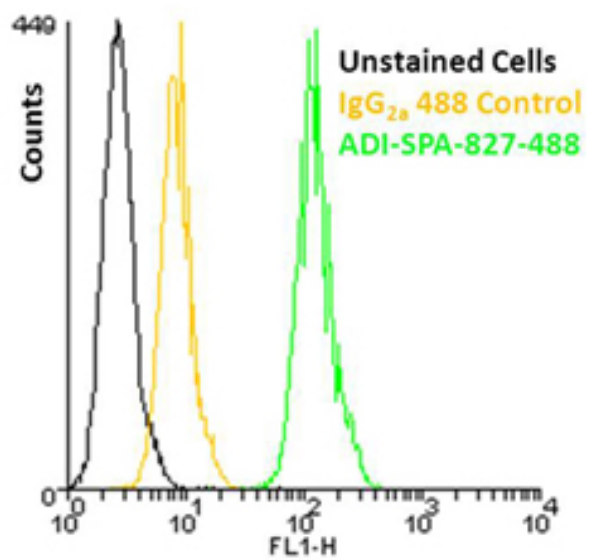
Ordering Information

[Order Online »](#)

ADI-SPA-827-488-F	200µg
-------------------	-------

Manuals, SDS & CofA

[View Online »](#)



Flow cytometry analysis of 10⁶ Jurkat cells stained using KDEL mAb (10C3), DyLight 488™.

Handling & Storage

Handling	Avoid vigorous centrifugation and vortexing. Do not freeze. Protect from light.
Long Term Storage	+4°C
Shipping	Blue Ice

Regulatory Status RUO - Research Use Only

Product Details

Alternative Name	Lys-Asp-Glu-Leu, Lysine-aspartic acid-glutamate-leucine
Application	Flow Cytometry
Application Notes	Detects three bands of ~94kDa, ~78 kDa and ~55kDa by Western blot.
Clone	10C3
Formulation	Liquid. In PBS containing 0.09% sodium azide.
GenBank ID	M14050
Host	Mouse
Immunogen	Synthetic peptide corresponding to aa 649-654 (S649EKDEL654) of rat Grp78.
Isotype	IgG2a
Purity Detail	Protein G affinity purified.
Recommendation Dilutions/Conditions	Flow Cytometry (1:20)Suggested dilutions/conditions may not be available for all applications.Optimal conditions must be determined individually for each application.
Source	Purified from ascites.
Species Reactivity	Avian, Insect, Mammalian, Plant, Yeast
Specificity	Recognizes proteins containing the KDEL sequence.

UniProt ID

P06761

Worry-free Guarantee

This antibody is covered by our [Worry-Free Guarantee](#)

Last modified: May 29, 2024



ENZO LIFE SCIENCES,
INC.
Phone: 800.942.0430
[info-
usa@enzolifesciences.com](mailto:info-usa@enzolifesciences.com)

European Sales Office
ENZO LIFE SCIENCES
(ELS) AG
Phone: +41 61 926 8989
[info-
eu@enzolifesciences.com](mailto:info-eu@enzolifesciences.com)

Belgium, The Netherlands
& Luxembourg
Phone: +32 3 466 0420
[info-
be@enzolifesciences.com](mailto:info-be@enzolifesciences.com)

France
Phone: +33 472 440 655
[info-
fr@enzolifesciences.com](mailto:info-fr@enzolifesciences.com)

Germany
Phone: +49 7621 5500 526
[info-
de@enzolifesciences.com](mailto:info-de@enzolifesciences.com)

UK & Ireland
Phone (UK customers):
0845 601 1488
Phone: +44 1392 825900
[info-
uk@enzolifesciences.com](mailto:info-uk@enzolifesciences.com)