

KDEL monoclonal antibody (10C3)

The tetrapeptide KDEL, located at the carboxy-terminal sequences of luminal proteins, is a retrieval motif essential for the precise sorting of these proteins along the secretory pathway. KDEL proteins perform essential functions in the endoplasmic reticulum (ER) related to protein folding as well as assembly. The localization of chaperones and other soluble proteins to the ER is achieved by their continuous retrieval from post-ER compartments by the KDEL receptor (Erd2p), which is a membrane protein localized in the Golgi apparatus.

This antibody is covered by our [Worry-Free Guarantee](#).

Citations: 4

[View Online »](#)

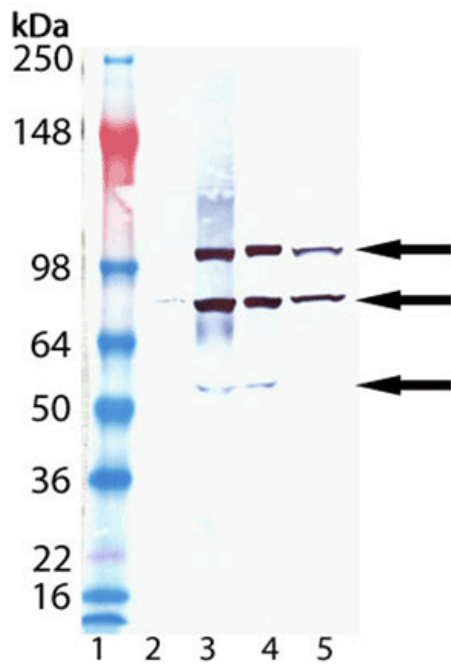
Ordering Information

[Order Online »](#)

ENZ-ABS679-0050	50µg
ENZ-ABS679-0200	200µg

Manuals, SDS & CofA

[View Online »](#)



Western Blot analysis of ENZ-ABS679: Lane 1: MW Marker, Lane 2: Grp78 (BiP) recombinant protein (Prod No. ADI-SPP-765), Lane 3: Mouse Liver Microsomes (Prod. No. ADI-LYT-MM100), Lane 4: Rat Liver Microsomes (ADI-LYT-RM100), Lane 5: HeLa (heat shocked), (cell lysate) (Prod. No. ADI-LYC-HL101).

Handling & Storage

Handling Avoid freeze/thaw cycles.

Long Term Storage -20°C

Shipping Blue Ice

Regulatory Status

RUO - Research Use Only

Product Details

Alternative Name	Lys-Asp-Glu-Leu, Lysine-aspartic acid-glutamate-leucine
Application	Electron microscopy, ELISA, Flow Cytometry, ICC, IF, IHC (PS), IP, WB
Application Notes	Detects three bands of ~94kDa, ~78 kDa and ~55kDa by Western blot.
Clone	10C3
Formulation	Liquid. In PBS, pH 7.2, containing 50% glycerol and 0.09% sodium azide.
GenBank ID	M14050
Host	Mouse
Immunogen	Synthetic peptide corresponding to aa 649-654 (S649EKDEL654) of rat Grp78.
Isotype	IgG2a
Purity Detail	Protein G affinity purified.
Recommendation Dilutions/Conditions	Western Blot (1:1,000, colorimetric)Suggested dilutions/conditions may not be available for all applications.Optimal conditions must be determined individually for each application.
Source	Purified from hybridoma tissue culture supernatant.
Species Reactivity	Avian, Insect, Mammalian, Plant, Yeast

Specificity	Recognizes proteins containing the KDEL sequence.
UniProt ID	P06761
Worry-free Guarantee	This antibody is covered by our Worry-Free Guarantee .

Last modified: May 29, 2024



ENZO LIFE SCIENCES,
INC.
Phone: 800.942.0430
[info-
usa@enzolifesciences.com](mailto:info-usa@enzolifesciences.com)

European Sales Office
ENZO LIFE SCIENCES
(ELS) AG
Phone: +41 61 926 8989
[info-
eu@enzolifesciences.com](mailto:info-eu@enzolifesciences.com)

Belgium, The Netherlands
& Luxembourg
Phone: +32 3 466 0420
[info-
be@enzolifesciences.com](mailto:info-be@enzolifesciences.com)

France
Phone: +33 472 440 655
[info-
fr@enzolifesciences.com](mailto:info-fr@enzolifesciences.com)

Germany
Phone: +49 7621 5500 526
[info-
de@enzolifesciences.com](mailto:info-de@enzolifesciences.com)

UK & Ireland
Phone (UK customers):
0845 601 1488
Phone: +44 1392 825900
[info-
uk@enzolifesciences.com](mailto:info-uk@enzolifesciences.com)