

# K-252b

## PKC inhibitor

General, cell permeable protein kinase inhibitor. Acts by binding to the ATP binding domain of the kinase. Potent inhibitor of  $\text{Ca}^{2+}$ /calmodulin kinase II. Inhibits myosin light chain kinase (MLCK;  $K_i=0.147\mu\text{M}$ ), cAMP- dependent protein kinase (PKA;  $K_i=0.09\mu\text{M}$ ), protein kinase C (PKC;  $K_i=0.02\mu\text{M}$ ), and cGMP-dependent protein kinase (PKG;  $K_i=0.1\mu\text{M}$ ).

Citations: 9

[View Online »](#)

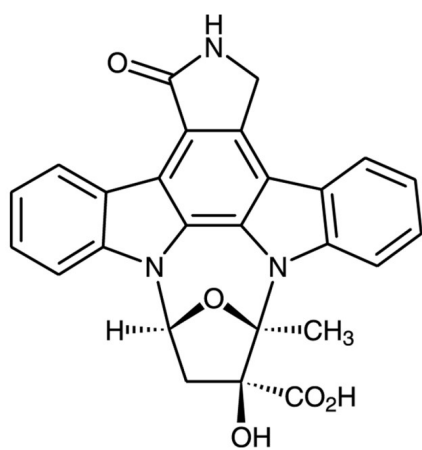
## Ordering Information

[Order Online »](#)

BML-EI234-0100	100µg
----------------	-------

## Manuals, SDS & CofA

[View Online »](#)



## Handling & Storage

Use/Stability	As indicated on product label or CoA when stored as recommended. Stable for at least 1 year after receipt when stored, as supplied, at 0-4°C. Stock solutions are stable for up to 3 months at -20°C.
Handling	Protect from light.
Long Term Storage	+4°C
Shipping	Ambient Temperature

## Regulatory Status

RUO - Research Use Only

## Product Details

Appearance	White solid.
CAS	99570-78-2
Couple Target	CaM kinase, MLCK, PKA, PKC, PKG
Couple Type	Inhibitor
Formula	$C_{26}H_{19}N_3O_5$
MW	453.5
Purity	≥98% (HPLC)
Solubility	Soluble in DMSO (1mg/ml) or dimethyl formamide (1mg/ml).



ENZO LIFE SCIENCES,  
INC.  
Phone: 800.942.0430  
[info-  
usa@enzolifesciences.com](mailto:info-usa@enzolifesciences.com)

European Sales Office  
ENZO LIFE SCIENCES  
(ELS) AG  
Phone: +41 61 926 8989  
[info-  
eu@enzolifesciences.com](mailto:info-eu@enzolifesciences.com)

Belgium, The Netherlands  
& Luxembourg  
Phone: +32 3 466 0420  
[info-  
be@enzolifesciences.com](mailto:info-be@enzolifesciences.com)

France  
Phone: +33 472 440 655  
[info-  
fr@enzolifesciences.com](mailto:info-fr@enzolifesciences.com)

Germany  
Phone: +49 7621 5500 526  
[info-  
de@enzolifesciences.com](mailto:info-de@enzolifesciences.com)

UK & Ireland  
Phone (UK customers):  
0845 601 1488  
Phone: +44 1392 825900  
[info-  
uk@enzolifesciences.com](mailto:info-uk@enzolifesciences.com)