

JZL-184

Monoacylglycerol lipase inhibitor

Potent, selective and irreversible inhibitor of MAG lipase (IC_{50} =8nM vs 4 μ M for FAAH). JZL-184-treated mice displayed a number of CB1-dependent behavioral effects including analgesia, hypothermia and hypomotility as well as increased levels of 2-arachidonoylglycerol in the brain (approx. 8-fold, with no effect on anandamide levels). JZL-184 produces a rapid and sustained blockade of brain 2-AG hydrolase activity in mice. It blocks neuropathic pain and enhances retrograde endocannabinoid signaling.

Citations: 3

[View Online »](#)

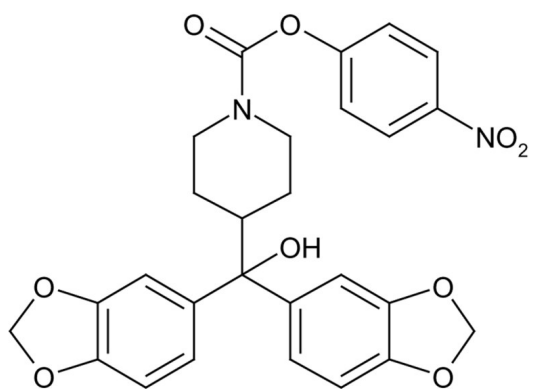
Ordering Information

[Order Online »](#)

BML-EI391-0010	10mg
BML-EI391-0050	50mg

Manuals, SDS & CofA

[View Online »](#)



Handling & Storage

Use/Stability As indicated on product label or CoA when stored as recommended.

Long Term Storage Ambient

Shipping Ambient Temperature

Regulatory Status RUO - Research Use Only

Product Details

Alternative Name 4-Nitrophenyl-4-(dibenzo[d][1,3]dioxol-5-yl(hydroxy)methyl)piperidine-1-carboxylate

Appearance Off-white solid.

CAS 1101854-58-3

Couple Target Monoacylglycerol lipase

Couple Type Inhibitor

Formula $C_{27}H_{24}N_2O_9$

Identity Determined by NMR.

MW 520.5

Purity $\geq 98\%$ (TLC)

Solubility Soluble in DMSO (10mg/ml).

Source Synthetic.



ENZO LIFE SCIENCES,
INC.
Phone: 800.942.0430
[info-
usa@enzolifesciences.com](mailto:info-usa@enzolifesciences.com)

European Sales Office
ENZO LIFE SCIENCES
(ELS) AG
Phone: +41 61 926 8989
[info-
eu@enzolifesciences.com](mailto:info-eu@enzolifesciences.com)

Belgium, The Netherlands
& Luxembourg
Phone: +32 3 466 0420
[info-
be@enzolifesciences.com](mailto:info-be@enzolifesciences.com)

France
Phone: +33 472 440 655
[info-
fr@enzolifesciences.com](mailto:info-fr@enzolifesciences.com)

Germany
Phone: +49 7621 5500 526
[info-
de@enzolifesciences.com](mailto:info-de@enzolifesciences.com)

UK & Ireland
Phone (UK customers):
0845 601 1488
Phone: +44 1392 825900
[info-
uk@enzolifesciences.com](mailto:info-uk@enzolifesciences.com)