

Insulin receptor β monoclonal antibody (C18C4)

The Insulin Receptor (InsR) is a heterodimeric receptor tyrosine kinase with an extracellular alpha-chain, a transmembrane domain and an intracellular beta-chain. InsR is activated upon binding of the peptide hormone insulin, leading to autophosphorylation of tyrosine residues 1146, 1150, and 1151 in the activation loop of the beta-chain. Additional autophosphorylation sites such as tyrosine residues 960, 972, 1316, and 1322 regulate the assembly of signal transduction complexes.

This antibody is covered by our [Worry-Free Guarantee](#).

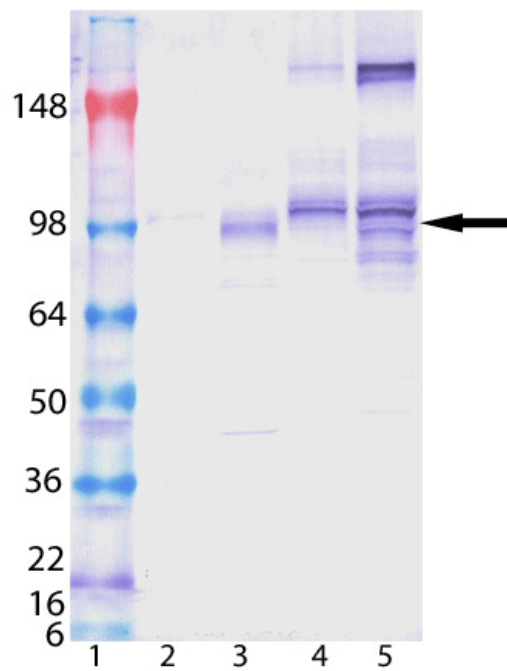
Ordering Information

[Order Online »](#)

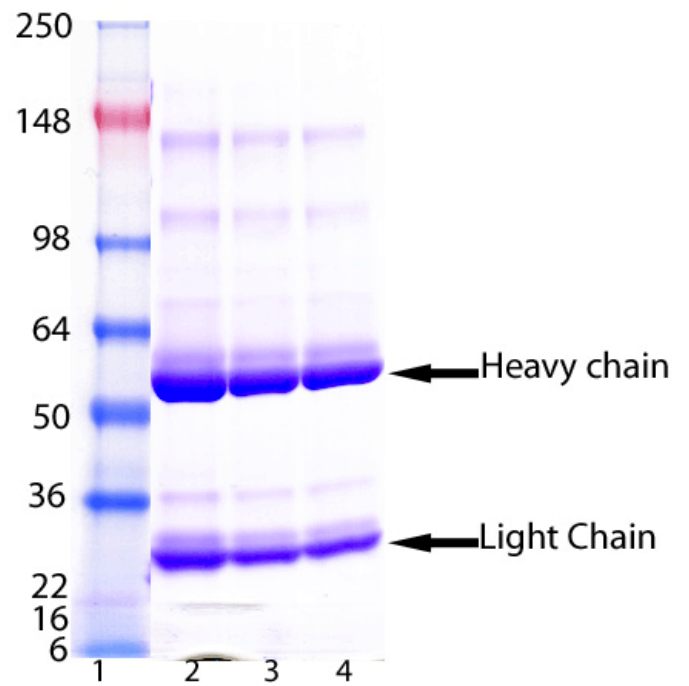
ENZ-ABS710-0100	100 μ g
-----------------	-------------

Manuals, SDS & CofA

[View Online »](#)



Western Blot analysis of ENZ-ABS710: Lane 1: MW Marker, Lane 2: HeLa lysate, Lane 3: MCF-7 lysate, Lane 4: PC-12 lysate, Lane 5: 3T3 lysate.



SDS-PAGE analysis of ENZ-ABS710: Lane 1: MW Marker, Lane 2: 10 μ g, Lane 3: 5 μ g, Lane 4: 2 μ g of Insulin receptor β monoclonal antibody (C18C4), resolved under reducing condition.

Handling & Storage

Long Term Storage -20°C

Shipping Blue Ice

Regulatory Status RUO - Research Use Only

Product Details

Alternative Name INSR

Application WB

Application Notes Detects a band of ~98kDa by Western blot.

Clone C18C4

Formulation Liquid. In PBS, pH 7.2, containing 50% glycerol and 0.09% sodium azide.

Host Mouse

Immunogen Recombinant cytoplasmic domain of human Insulin Receptor β .

Isotype IgG1

Purity Detail Protein G affinity purified.

Recommendation
Dilutions/Conditions Western Blot (1:1,000) Suggested dilutions/conditions may not be available for all applications. Optimal conditions must be determined individually for each application.

Source Purified from hybridoma tissue culture supernatant.

Species Reactivity Bovine, Hamster, Human, Mouse, Porcine, Rabbit, Rat, Sheep

UniProt ID P06213

Worry-free Guarantee This antibody is covered by our [Worry-Free Guarantee](#).



ENZO LIFE SCIENCES,
INC.
Phone: 800.942.0430
[info-
usa@enzolifesciences.com](mailto:info-usa@enzolifesciences.com)

European Sales Office
ENZO LIFE SCIENCES
(ELS) AG
Phone: +41 61 926 8989
[info-
eu@enzolifesciences.com](mailto:info-eu@enzolifesciences.com)

Belgium, The Netherlands
& Luxembourg
Phone: +32 3 466 0420
[info-
fr@enzolifesciences.com](mailto:info-fr@enzolifesciences.com)

France
Phone: +33 472 440 655
[info-
fr@enzolifesciences.com](mailto:info-fr@enzolifesciences.com)

Germany
Phone: +49 7621 5500 526
[info-
de@enzolifesciences.com](mailto:info-de@enzolifesciences.com)

UK & Ireland
Phone (UK customers):
0845 601 1488
Phone: +44 1392 825900
[info-
uk@enzolifesciences.com](mailto:info-uk@enzolifesciences.com)