

INSM1 monoclonal antibody (A-8)

INSM1 (A-8) Mouse Monoclonal Antibody is intended for qualitative immunohistochemistry with normal and neoplastic formalin-fixed, paraffin-embedded tissue sections, to be viewed by light microscopy.

INSM1 (Insulinoma-associated protein 1) is a transcription factor primarily known for its role in neuroendocrine differentiation and development. It is expressed in various neuroendocrine tissues and tumors, including pancreatic neuroendocrine tumors (NETs), neuroendocrine lung tumors, and neuroendocrine carcinomas of the gastrointestinal tract. INSM1 plays a crucial role in regulating the expression of genes involved in neuroendocrine cell fate determination, differentiation, and hormone production. Its expression pattern and potential diagnostic and prognostic significance make it a valuable biomarker in neuroendocrine tumor pathology and research.

This antibody is covered by our [Worry-Free Guarantee](#).

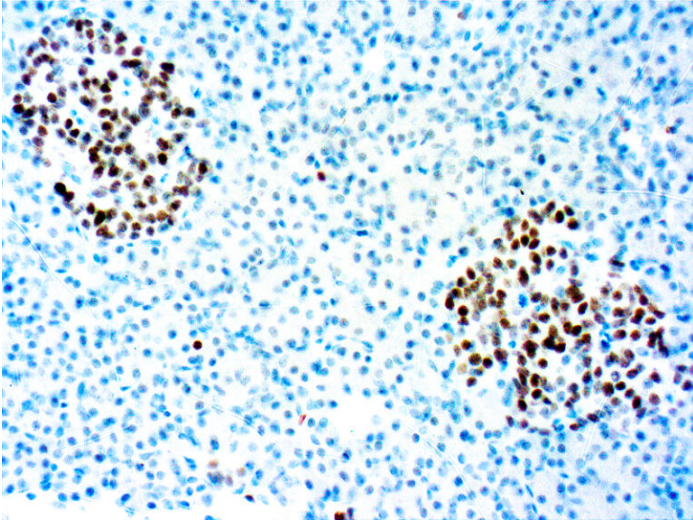
Ordering Information

[Order Online »](#)

ENZ-ABS855-1000	1ml
ENZ-ABS855-0100	100µl

Manuals, SDS & CofA

[View Online »](#)



Formalin fixed paraffin embedded human pancreas
stained with INSM1 antibody, 25x

Handling & Storage

Long Term Storage +4°C

Shipping Blue Ice

Regulatory Status

RUO - Research Use Only

Product Details

Alternative Name Insulinoma-associated protein 1

Application IHC (PS)

Application Notes Pretreatment: Tris/EDTA Buffer pH 8.0

Clone A-8

Formulation This product is supplied as an immunoglobulin and contains sodium azide as a preservative

Host Mouse

Immunogen Amino acid 81-125 at the N-terminus of human INSM1

Isotype IgG1, kappa

Positive Control Neuroendocrine tumor

Recommendation Dilutions/Conditions 1:50 – 1:200 Antibody dilutions should be appropriately adjusted and verified according to the detection system used. Optimal conditions must be determined individually for each application.

Species Reactivity Human

Worry-free Guarantee This antibody is covered by our [Worry-Free Guarantee](#)