

iNOS polyclonal antibody

This antibody is covered by our [Worry-Free Guarantee](#).

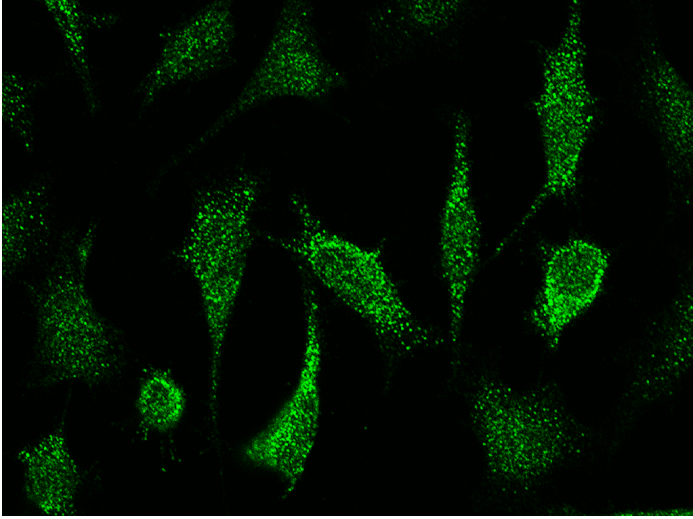
Ordering Information

[Order Online »](#)

ENZ-ABS941-0100	100µl
-----------------	-------

Manuals, SDS & CofA

[View Online »](#)



Immunofluorescence staining of NOS2 in HeLa cells. Cells were fixed with 4% PFA, permeabilized with 0.3% Triton X-100 in PBS, blocked with 10% serum, and incubated with rabbit anti-human NOS2 polyclonal antibody (dilution ratio 1:1000) at 4 °C overnight. Then cells were stained with the Alexa Fluor®488-conjugated Goat Anti-rabbit IgG secondary antibody (green). Positive staining was localized to cytoplasm.

Handling & Storage

Handling	Protected from light. Avoid freeze-thaw cycles.
Long Term Storage	-20°C
Shipping	Blue Ice

Regulatory Status

RUO - Research Use Only

Product Details

Alternative Name	NOS2, NOS II, Nitric oxide synthase (inducible), Hepatocyte NOS
Application	ICC, IF
Formulation	Liquid. 0.2 µm filtered solution in PBS. Preservative free.
Host	Rabbit
Immunogen	Synthetic peptide corresponding to the N-terminus of the human NOS2.
Isotype	IgG
Purity Detail	Protein A and antigen affinity purified.
Recommendation Dilutions/Conditions	Immunocytochemistry (1:300-1:10'000)Immunofluorescence (1:300-1:10'000)Suggested dilutions/conditions may not be available for all applications.Optimal conditions must be determined individually for each application.
Species Reactivity	Human
Worry-free Guarantee	This antibody is covered by our Worry-Free Guarantee

Last modified: September 17, 2024



Enzo Life Sciences
INC.
Phone: 800.942.0430
info-usa@enzolifesciences.com

European Sales Office
ENZO LIFE SCIENCES
(ELS) AG
Phone: +41 61 926 8989
info-eu@enzolifesciences.com

Belgium, The Netherlands
& Luxembourg
Phone: +32 3 466 0420
info-fr@enzolifesciences.com

France
Phone: +33 472 440 655
info-fr@enzolifesciences.com

Germany
Phone: +49 7621 5500 526
info-de@enzolifesciences.com

UK & Ireland
Phone (UK customers):
0845 601 1488
Phone: +44 1392 825900
info-uk@enzolifesciences.com