

# iGP-1

## Mitochondrial GPDH inhibitor

A potent and cell permeable inhibitor of the mitochondrial glycerol-3-phosphate dehydrogenase (mGPDH), which is selective over the cytosolic enzyme. It does not block pyruvate uptake into cells or mitochondria and has no direct effect on glycolysis in synaptosomes. This novel inhibitor is a unique tool which may be used to investigate the role of glycerol-3-phosphate metabolism in isolated and intact systems.

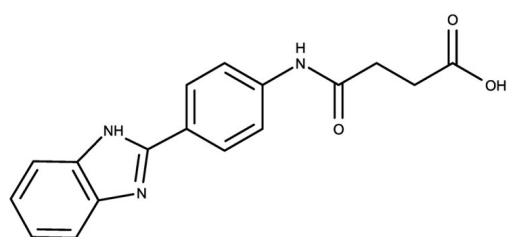
### Ordering Information

[Order Online »](#)

ENZ-CHM477-0025	25mg
-----------------	------

### Manuals, SDS & CofA

[View Online »](#)



## Handling & Storage

**Use/Stability** As indicated on product label or CoA when stored as recommended.

**Long Term Storage** -20°C

**Shipping** Ambient Temperature

**Regulatory Status** RUO - Research Use Only

## Product Details

**Alternative Name** N-[4-(1H-Benzoimidazol-2-yl)-phenyl]-succinamic acid

**Appearance** Beige solid.

**CAS** 27031-00-1

**Couple Target** Glycerol-3-phosphate dehydrogenase, mitochondrial

**Couple Type** Inhibitor

**Formula**  $C_{17}H_{15}N_3O_3$

**Identity** Determined by NMR.

**MW** 309.32

**Purity** ≥98% (TLC)

**Solubility** Soluble in DMSO (50 mg/ml).

**Last modified: February 27, 2025**



ENZO LIFE SCIENCES,  
INC.  
Phone: 800.942.0430  
[info-  
usa@enzolifesciences.com](mailto:info-usa@enzolifesciences.com)

European Sales Office  
ENZO LIFE SCIENCES  
(ELS) AG  
Phone: +41 61 926 8989  
[info-  
eu@enzolifesciences.com](mailto:info-eu@enzolifesciences.com)

Belgium, The Netherlands  
& Luxembourg  
Phone: +32 3 466 0420  
[info-  
fr@enzolifesciences.com](mailto:info-fr@enzolifesciences.com)

France  
Phone: +33 472 440 655  
[info-  
fr@enzolifesciences.com](mailto:info-fr@enzolifesciences.com)

Germany  
Phone: +49 7621 5500 526  
[info-  
de@enzolifesciences.com](mailto:info-de@enzolifesciences.com)

UK & Ireland  
Phone (UK customers):  
0845 601 1488  
Phone: +44 1392 825900  
[info-  
uk@enzolifesciences.com](mailto:info-uk@enzolifesciences.com)