

IBMX

PDE inhibitor

Potent, non-specific inhibitor of phosphodiesterases ($IC_{50}=2-50\mu M$). More potent than theophylline at adenosine receptors. Accelerates conversion of mouse fibroblast cells into adipose cells.

Citations: 30

[View Online »](#)

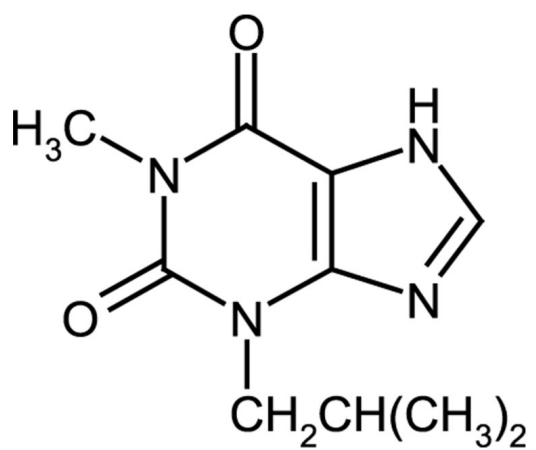
Ordering Information

[Order Online »](#)

BML-PD140-0200	200mg
BML-PD140-1000	1g

Manuals, SDS & CofA

[View Online »](#)



Handling & Storage

Use/Stability	As indicated on product label or CoA when stored as recommended. Store, as supplied at -20°C for up to 1 year. Store solutions at -20°C for up to 3 months.
Long Term Storage	-20°C
Shipping	Blue Ice

Regulatory Status

RUO - Research Use Only

Product Details

Appearance	White solid.
CAS	28822-58-4
Couple Target	PDE
Couple Type	Inhibitor
Formula	$C_{10}H_{14}N_4O_2$
Identity	Determined by NMR.
MW	222.2
Purity	≥99% (HPLC)
RTECS	ZD8500000
Solubility	Soluble in 100% ethanol, DMSO or methanol (warm, 50mg/ml); almost insoluble in water.

Last modified: May 29, 2024



ENZO LIFE SCIENCES,
INC.
Phone: 800.942.0430
[info-
usa@enzolifesciences.com](mailto:info-usa@enzolifesciences.com)

European Sales Office
ENZO LIFE SCIENCES
(ELS) AG
Phone: +41 61 926 8989
[info-
eu@enzolifesciences.com](mailto:info-eu@enzolifesciences.com)

Belgium, The Netherlands
& Luxembourg
Phone: +32 3 466 0420
[info-
fr@enzolifesciences.com](mailto:info-fr@enzolifesciences.com)

France
Phone: +33 472 440 655
[info-
fr@enzolifesciences.com](mailto:info-fr@enzolifesciences.com)

Germany
Phone: +49 7621 5500 526
[info-
de@enzolifesciences.com](mailto:info-de@enzolifesciences.com)

UK & Ireland
Phone (UK customers):
0845 601 1488
Phone: +44 1392 825900
[info-
uk@enzolifesciences.com](mailto:info-uk@enzolifesciences.com)