

Human Serum Albumin recombinant monoclonal antibody (101)

This antibody is specifically designed to recognize and bind to human serum albumin, making it valuable in research and clinical settings for studying liver function, drug binding, and disease conditions where albumin levels are altered.

Human serum albumin is the most abundant protein in human blood plasma, playing a crucial role in maintaining osmotic pressure, transporting hormones, fatty acids, and other compounds.

This antibody is covered by our [Worry-Free Guarantee](#).

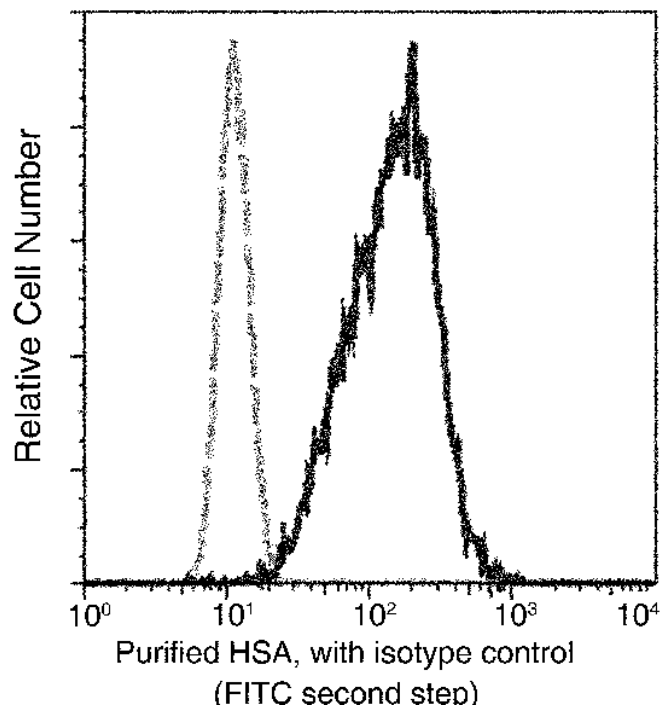
Ordering Information

[Order Online »](#)

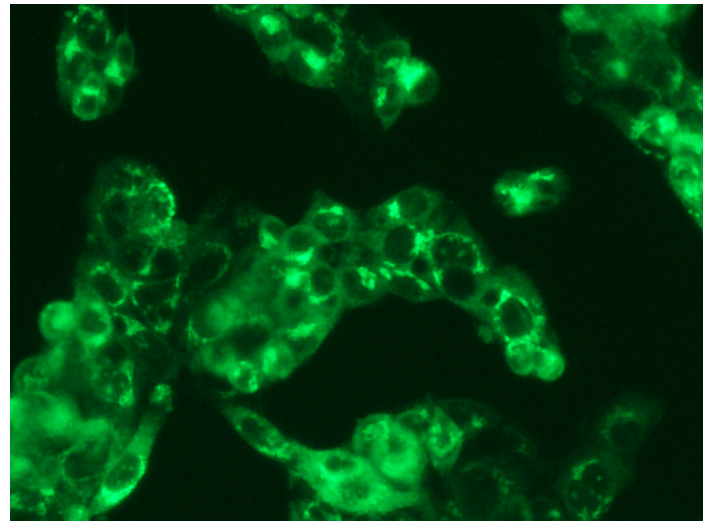
ENZ-ABS1027-0100	100µl
------------------	-------

Manuals, SDS & CofA

[View Online »](#)



Flow cytometric analysis of Human HSA expression on HepG2 cells. The cells were treated according to manufacturer's manual (BD Pharmingen™ Cat. No. 554714), stained with purified anti-Human HSA, then a FITC-conjugated second step antibody. The fluorescence histograms were derived from gated events with the forward and side light-scatter characteristics of intact cells.



Immunofluorescence staining of Human HSA in HepG2 cells. Cells were fixed with 4% PFA, permeabilized with 0.3% Triton X-100 in PBS, blocked with 10% serum, and incubated with rabbit anti-Human HSA monoclonal antibody (1:60) at 37°C 1 hour. Then cells were stained with the Alexa Fluor® 488-conjugated Goat Anti-rabbit IgG secondary antibody (green). Positive staining was localized to cytoplasm.

Handling & Storage

Handling	Avoid freeze-thaw cycles.
Long Term Storage	-20°C
Shipping	Blue Ice

Regulatory Status

RUO - Research Use Only

Product Details

Alternative Name	HSA, ALB
Application	ELISA, Flow Cytometry, ICC, IF, IP, WB
Clone	101
Crossreactivity	No cross-reactivity in ELISA with Bovine serum albumin / BSA.
Formulation	Liquid. 0.2 µm filtered solution in PBS. Preservative free. Carrier-free.
Host	Rabbit
Immunogen	Purified human serum albumin.
Isotype	IgG
Purity Detail	Protein A purified.
Recommendation Dilutions/Conditions	ELISA (1:5'000-1:10'000)Immunocytochemistry / Immunofluorescence (1:20-1:100)Western Blot (1:500-1:2'000)Flow Cytometry (1:25-1:100)Immunoprecipitation (0.5-2 µL/mg of lysate)Suggested dilutions/conditions may not be available for all applications.Optimal conditions must be determined individually for each application.
Species Reactivity	Human
Worry-free Guarantee	This antibody is covered by our Worry-Free Guarantee .



ENZO LIFE SCIENCES,
INC.
Phone: 800.942.0430
[info-
usa@enzolifesciences.com](mailto:info-usa@enzolifesciences.com)

European Sales Office
ENZO LIFE SCIENCES
(ELS) AG
Phone: +41 61 926 8989
[info-
eu@enzolifesciences.com](mailto:info-eu@enzolifesciences.com)

Belgium, The Netherlands
& Luxembourg
Phone: +32 3 466 0420
[info-
be@enzolifesciences.com](mailto:info-be@enzolifesciences.com)

France
Phone: +33 472 440 655
[info-
fr@enzolifesciences.com](mailto:info-fr@enzolifesciences.com)

Germany
Phone: +49 7621 5500 526
[info-
de@enzolifesciences.com](mailto:info-de@enzolifesciences.com)

UK & Ireland
Phone (UK customers):
0845 601 1488
Phone: +44 1392 825900
[info-
uk@enzolifesciences.com](mailto:info-uk@enzolifesciences.com)