

HSP20 polyclonal antibody

Hsp20 is a member of the family of small heat shock proteins (sHsps), with homology to Hsp25, Hsp27, and alphaB-crystallin. Highest expression of Hsp20 is found in skeletal, smooth, and cardiac muscle. Under heat shock, Hsp20 translocates from the cytosol to the nucleus, although the amount of Hsp20 in the cell does not increase like other Hsps. Hsp20 oligomerization and interaction with polymeric actin filaments is regulated via phosphorylation by PKA and PKG.

This antibody is covered by our [Worry-Free Guarantee](#).

Citations: 2

[View Online »](#)

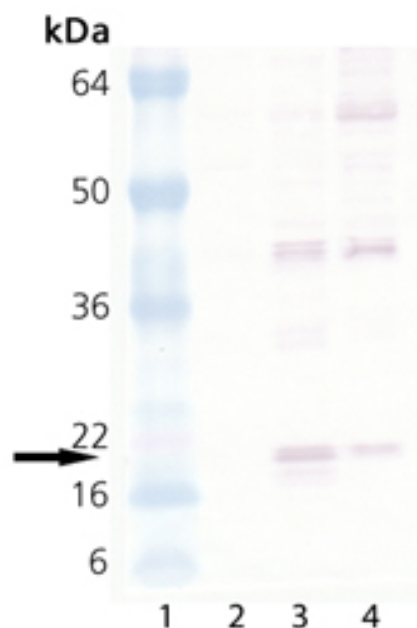
Ordering Information

[Order Online »](#)

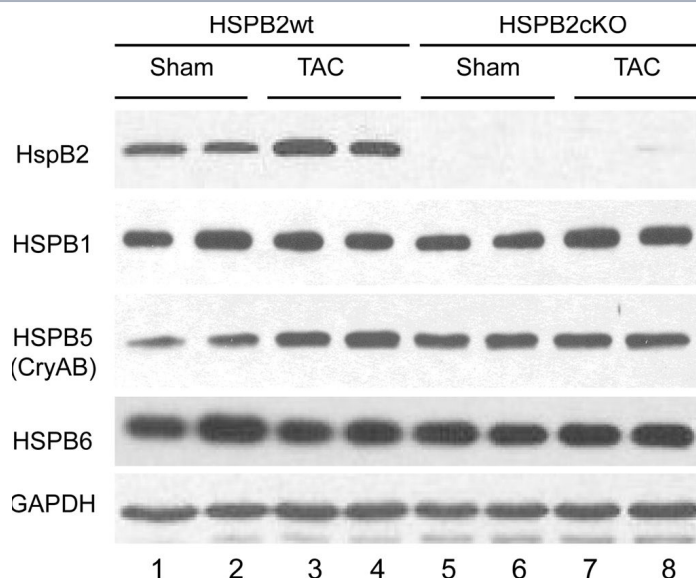
ADI-SPA-796-D	50µg
ADI-SPA-796-F	200µg

Manuals, SDS & CofA

[View Online »](#)



Western blot analysis of HSP20, pAb (Prod. no. ADI-SPA-796): Lane 1: MW Marker, Lane 2: HeLa (heat shocked) (Prod. No. ADI-LYC-HL101), Lane 3: 3T3 (heat shocked) (Prod. No. ADI-LYC-3T101), Lane 4: PC-12 (heat shocked) (Prod. No. ADI-LYC-PC101)



No significant changes in expression of small HSP in the absence of HSPB2 and/or under cardiac stress conditions. Hearts from HSPB2wt and HSPB2cKO were isolated at 8 weeks after sham or TAC procedure and protein extracts (soluble fraction) were analyzed by western blots probed with anti-HSPB2, HSPB1 (HSP25), HSPB5 (CRYAB) and HSPB6 (HSP20). In contrast to transcripts, protein levels were not significantly modified in samples from TAC operated mice and except for HSPB2, there was no difference between HSPB2cKO and HSPB2wt samples. Two to five samples were analyzed per group and a representative example is shown.

Image collected and cropped by CiteAb under a CC-BY license from the following publication: HSPB2 is dispensable for the cardiac hypertrophic response but reduces mitochondrial energetics following pressure overload in mice. *PLoS One* (2012)

Handling & Storage

Handling Avoid freeze/thaw cycles.

Long Term Storage -20°C

Shipping Blue Ice

Regulatory Status RUO - Research Use Only

Product Details

Alternative Name HspB6, Heat shock protein 20

Application WB

Application Notes Detects a band of ~20kDa by Western blot.

Formulation Liquid. In 0.1M phosphate buffer, pH 7.0, containing 3% BSA and 0.09% sodium azide.

Host Rabbit

Immunogen Rat skeletal muscle Hsp20.

Purity Detail Peptide affinity purified.

Recommendation Dilutions/Conditions Western Blot (1:1,000, colorimetric) Suggested dilutions/conditions may not be available for all applications. Optimal conditions must be determined individually for each application.

Source Purified from rabbit serum.

Species Reactivity Bovine, Dog, Fish, Human, Mouse, Rat

UniProt ID P97541

Worry-free Guarantee This antibody is covered by our [Worry-Free Guarantee](#)



ENZO LIFE SCIENCES,
INC.
Phone: 800.942.0430
[info-
usa@enzolifesciences.com](mailto:info-usa@enzolifesciences.com)

European Sales Office
ENZO LIFE SCIENCES
(ELS) AG
Phone: +41 61 926 8989
[info-
eu@enzolifesciences.com](mailto:info-eu@enzolifesciences.com)

Belgium, The Netherlands
& Luxembourg
Phone: +32 3 466 0420
[info-
fr@enzolifesciences.com](mailto:info-fr@enzolifesciences.com)

France
Phone: +33 472 440 655
[info-
fr@enzolifesciences.com](mailto:info-fr@enzolifesciences.com)

Germany
Phone: +49 7621 5500 526
[info-
de@enzolifesciences.com](mailto:info-de@enzolifesciences.com)

UK & Ireland
Phone (UK customers):
0845 601 1488
Phone: +44 1392 825900
[info-
uk@enzolifesciences.com](mailto:info-uk@enzolifesciences.com)

Last modified: May 29, 2024