

# HLA-G (human) monoclonal antibody (MEM-G/1)

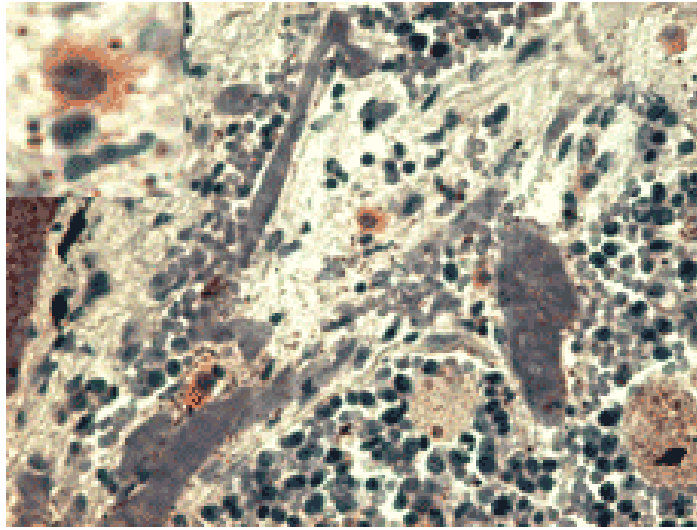
This antibody is covered by our [Worry-Free Guarantee](#).

Citations: 4

[View Online »](#)

Manuals, SDS & CofA

[View Online »](#)



## Handling & Storage

Handling	Keep at +4°C. Do not freeze.
Short Term Storage	+4°C
Long Term Storage	+4°C
Shipping	Blue Ice

**Regulatory Status** RUO - Research Use Only

## Product Details

Application	IHC (PS), WB
Clone	MEM-G/1
Formulation	Liquid. In PBS, pH 7.4, containing 15mM sodium azide.
Host	Mouse
Immunogen	Human recombinant HLA-G denatured heavy chain.
Isotype	IgG1
Purity Detail	Protein A affinity chromatography.
Recommendation Dilutions/Conditions	Immunohistochemistry (paraffin sections, stain by standard ABC technique, pretraet by heat retrieval in 0.01 citrate buffer (4 x 2 minutes in microwave oven); recommended starting dilution is 1:60-1:100; incubate 1 hour at room temperature; positive tissue: Human placenta – extravillous cytotrophoblast)Suggested dilutions/conditions may not be available for all applications.Optimal conditions must be determined individually for each application.
Species Reactivity	Human
Specificity	Recognizes denatured HLA-G heavy chain.
UniProt ID	P17693

Last modified: May 29, 2024



ENZO LIFE SCIENCES,  
INC.  
Phone: 800.942.0430  
[info-  
usa@enzolifesciences.com](mailto:info-usa@enzolifesciences.com)

European Sales Office  
ENZO LIFE SCIENCES  
(ELS) AG  
Phone: +41 61 926 8989  
[info-  
eu@enzolifesciences.com](mailto:info-eu@enzolifesciences.com)

Belgium, The Netherlands  
& Luxembourg  
Phone: +32 3 466 0420  
[info-  
be@enzolifesciences.com](mailto:info-be@enzolifesciences.com)

France  
Phone: +33 472 440 655  
[info-  
fr@enzolifesciences.com](mailto:info-fr@enzolifesciences.com)

Germany  
Phone: +49 7621 5500 526  
[info-  
de@enzolifesciences.com](mailto:info-de@enzolifesciences.com)

UK & Ireland  
Phone (UK customers):  
0845 601 1488  
Phone: +44 1392 825900  
[info-  
uk@enzolifesciences.com](mailto:info-uk@enzolifesciences.com)