

HIGHDEF[®] red IHC chromogen (AP, plus)

High definition IHC chromogen producing brilliant red color for AP-activated development in automated and manual systems.

HIGHDEF[®] red IHC chromogen (AP, plus) is intended to be used in conjunction with alkaline phosphatase (AP)-based immunostaining or in situ hybridization systems that run on automated staining instruments as well as manual use.

Citations: 4

[View Online »](#)

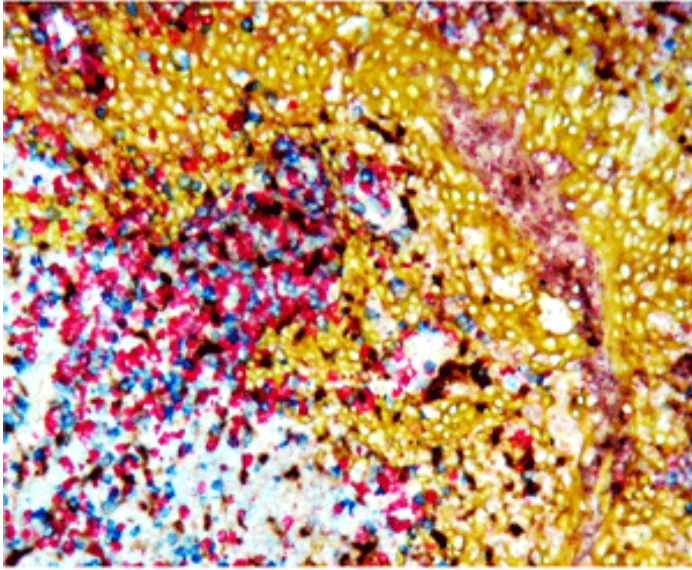
Ordering Information

[Order Online »](#)

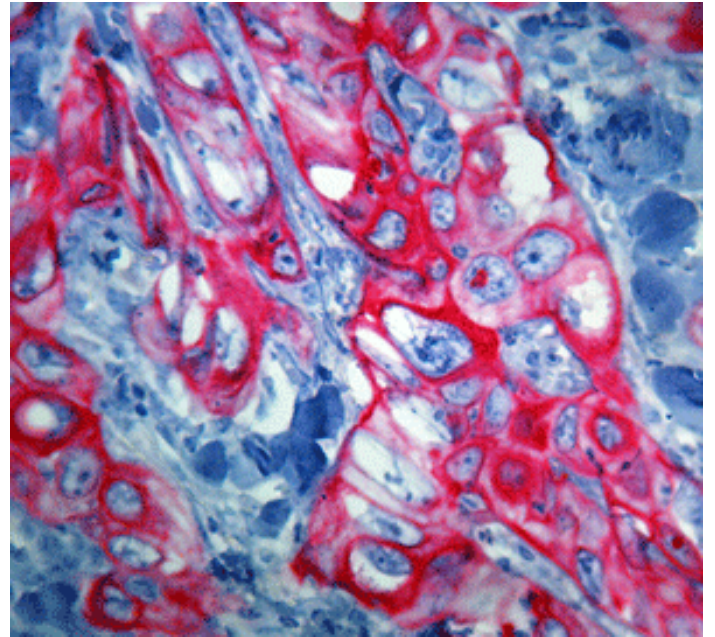
ADI-950-141-0030	30ml
------------------	------

Manuals, SDS & CofA

[View Online »](#)



Formalin-fixed paraffin-embedded human tonsil stained with pre-diluted mouse CD68 antibody labeled with HIGHDEF[®] IHC chromogen substrate (DAB, HC) (Prod. no. ADI-950-211, brown), pre-diluted rabbit lambda light-chain antibody labeled with HIGHDEF[®] blue IHC chromogen (AP) (Prod. no. ADI-950-150, blue), pre-diluted rabbit kappa light-chain antibody labeled with HIGHDEF[®] red IHC chromogen (AP, plus) (Prod. no. ADI-950-141, red), high molecular weight cytokeratin labeled with HIGHDEF[®] yellow IHC chromogen (HRP) (Prod. no. ADI-950-170, yellow), and methyl green nuclear counterstain.



Immunohistochemistry analysis: Formalin fixed paraffin embedded squamous cell carcinoma human tissue stained with a CK 5/6 antibody labeled with HIGHDEF[®] red IHC chromogen (AP, plus) (Prod. no. ADI-950-141) produces a brilliant red color.

Handling & Storage

Long Term Storage +4°C

Shipping Blue Ice

Regulatory Status

RUO - Research Use Only

Product Details

Application IHC, ISH (in situ hybridization)

Contents HIGHDEF[®] red IHC chromogen (AP, plus) substrate buffer and chromogen, Empty mixing bottle

Technical Info / Product Notes

Traditional formulations for red alkaline phosphatase chromogens are unstable upon mixing. This can be problematic for use in automated slide strainers. The HIGHDEF[®] red IHC chromogen (AP, plus) has been formulated for on-slide and on-board mixing for any autostainer. Both components are stable and can be loaded at the beginning of the staining run, for walk away convenience. It produces a red color, ranging from pink to brilliant dark red and is insoluble in organic solvents; therefore sections can be dehydrated in alcohol, cleared in xylene (or a xylene-substitute), and permanently mounted. This chromogen substrate system may be used for both automation and manual use.

Last modified: May 29, 2024



ENZO LIFE SCIENCES,
INC.
Phone: 800.942.0430
[info-
usa@enzolifesciences.com](mailto:info-usa@enzolifesciences.com)

European Sales Office
ENZO LIFE SCIENCES
(ELS) AG
Phone: +41 61 926 8989
[info-
eu@enzolifesciences.com](mailto:info-eu@enzolifesciences.com)

Belgium, The Netherlands
& Luxembourg
Phone: +32 3 466 0420
[info-
fr@enzolifesciences.com](mailto:info-fr@enzolifesciences.com)

France
Phone: +33 472 440 655
[info-
fr@enzolifesciences.com](mailto:info-fr@enzolifesciences.com)

Germany
Phone: +49 7621 5500 526
[info-
de@enzolifesciences.com](mailto:info-de@enzolifesciences.com)

UK & Ireland
Phone (UK customers):
0845 601 1488
Phone: +44 1392 825900
[info-
uk@enzolifesciences.com](mailto:info-uk@enzolifesciences.com)