

HeLa (heat shocked) , (cell lysate)

The HeLa cell line was originally derived from a human donor's epithelioid carcinoma tissue (cervix). Research into the heat shock response provides a model for studying the effects of environmental and homeostatic stressors upon cells. Heat shocking reproducibly alters gene expression in cells, resulting in various morphological changes and the expression of heat shock proteins crucial for both maintaining cellular homeostasis during normal cell growth and for survival during and after various cellular stresses. Heat shocking increases morphological changes compatible with apoptosis in many cell types. In mammalian cells, the induction of the heat shock response requires the activation and nuclear translocation of transcription factors which control the expression of cytoprotective heat shock proteins, and play pivotal roles in the development of inflammation and immunity.

Citations: 4

[View Online »](#)

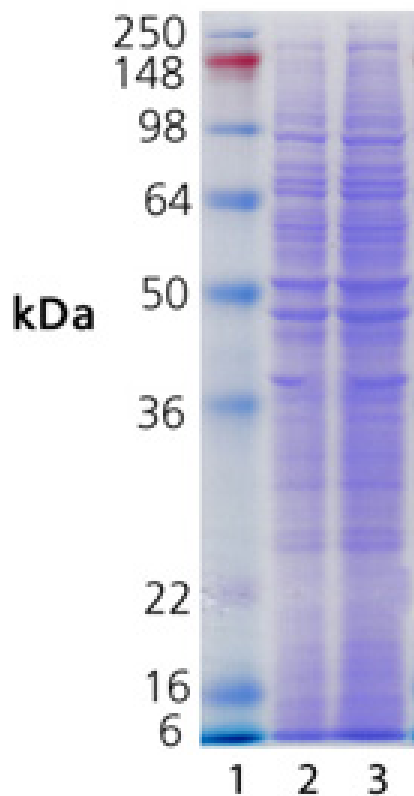
Ordering Information

[Order Online »](#)

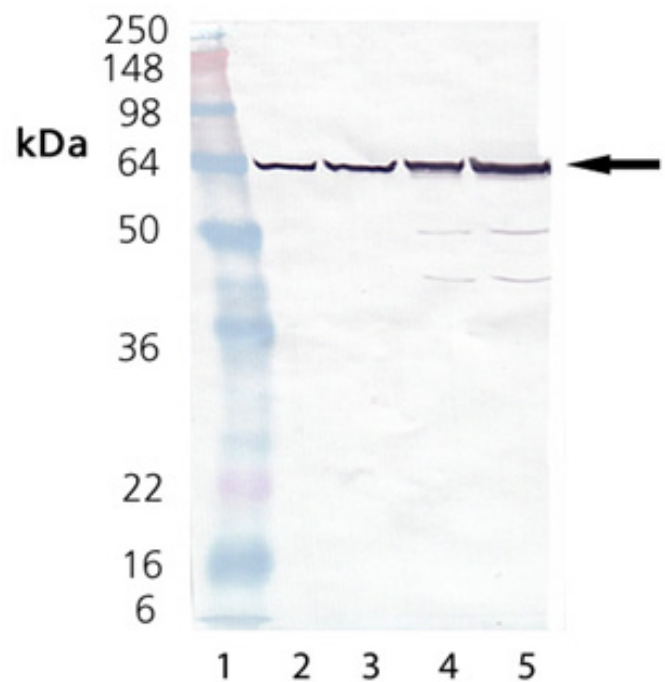
ADI-LYC-HL101-F	200µg
-----------------	-------

Manuals, SDS & CofA

[View Online »](#)



SDS-Page Analysis: Lane 1: MW marker; Lane 2: HeLa cell lysate heat shocked (10 μ g); and Lane 3: HeLa cell lysate heat shocked (20 μ g).



Western blot analysis: Lane 1: MW marker; Lane 2: HeLa cell lysate control (10 μ g); Lane 3: HeLa cell lysate control (20 μ g); Lane 4: HeLa cell lysate heat shocked (10 μ g); and Lane 5: HeLa cell lysate heat shocked (20 μ g).

Handling & Storage

Handling Avoid freeze/thaw cycles.

Long Term Storage -80°C

Shipping Dry Ice

Regulatory Status RUO - Research Use Only

Product Details

Application Notes Western blot control.

Formulation Liquid. In SDS-PAGE sample buffer.

Source Human



ENZO LIFE SCIENCES,
INC.
Phone: 800.942.0430
[info-
usa@enzolifesciences.com](mailto:info-usa@enzolifesciences.com)

European Sales Office
ENZO LIFE SCIENCES
(ELS) AG
Phone: +41 61 926 8989
[info-
eu@enzolifesciences.com](mailto:info-eu@enzolifesciences.com)

Belgium, The Netherlands
& Luxembourg
Phone: +32 3 466 0420
[info-
be@enzolifesciences.com](mailto:info-be@enzolifesciences.com)

France
Phone: +33 472 440 655
[info-
fr@enzolifesciences.com](mailto:info-fr@enzolifesciences.com)

Germany
Phone: +49 7621 5500 526
[info-
de@enzolifesciences.com](mailto:info-de@enzolifesciences.com)

UK & Ireland
Phone (UK customers):
0845 601 1488
Phone: +44 1392 825900
[info-
uk@enzolifesciences.com](mailto:info-uk@enzolifesciences.com)