

GLUT1 Recombinant monoclonal antibody (3132R)

Glucose transporters are integral membrane glycoproteins involved in transporting glucose into most cells. There are many types of glucose transport carrier proteins, designated as Glut1 to Glut12. Glut1 is a major glucose transporter in the mammalian blood-brain barrier. It is expressed in high density on the membranes of human erythrocytes and the brain capillaries that comprise the blood-brain barrier. Glut1 is expressed at variable levels in many human tissues. Overexpression has been linked to tumor progression or poor survival of patients with carcinomas of the colon, breast, cervical, lung, bladder and mesothelioma. Glut1 is a sensitive and specific marker for the differentiation of malignant mesothelioma (positive) from reactive mesothelium (negative).

This antibody is covered by our [Worry-Free Guarantee](#).

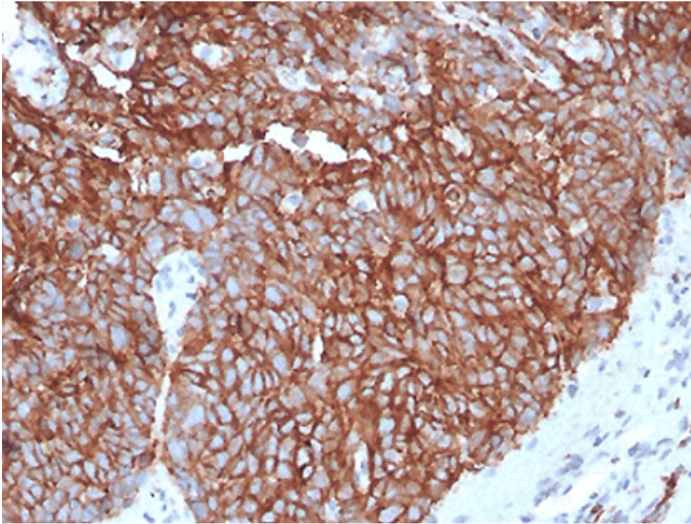
Ordering Information

[Order Online »](#)

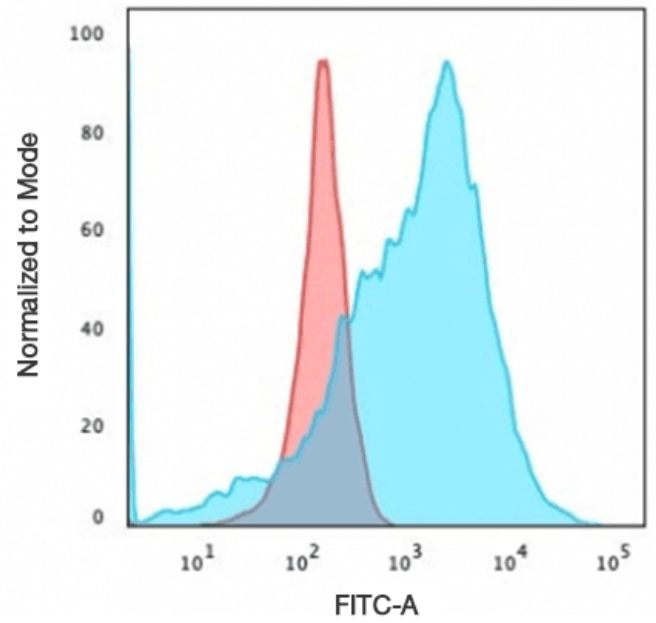
ENZ-ABS763-0100	100µg
-----------------	-------

Manuals, SDS & CofA

[View Online »](#)



IHC testing of human tongue with recombinant GLUT1 antibody. Required HIER: boil tissue sections in 10mM citrate buffer, pH 6, for 10-20 min followed by cooling at RT for 20 min.



Flow cytometry testing of human K562 cells with recombinant GLUT1 antibody (clone GLUT1/3132R); Red=isotype control, Blue= recombinant GLUT1 antibody.

Handling & Storage

Handling Avoid freeze/thaw cycles.

Long Term Storage -20°C

Shipping Blue Ice

Regulatory Status RUO - Research Use Only

Product Details

Alternative Name Solute carrier family 2 facilitated glucose transporter member 1, Glucose transporter type 1 (erythrocyte/brain), HEPG2 glucose transporter

Application ELISA, Flow Cytometry, IHC

Clone 3132R

Formulation Liquid. In 1X PBS containing 0.1 mg/ml BSA and 0.05% sodium azide.

Host Rabbit

Immunogen A portion of amino acids 203-305 from the human protein was used as the immunogen for this recombinant GLUT1 antibody.

Isotype IgGk

Purity Detail Protein G affinity purified

Species Reactivity Human

Specificity Recognizes a protein of 45-55kDa, which is identified as GLUT1

UniProt ID P11166

Worry-free Guarantee This antibody is covered by our [Worry-Free Guarantee](#).



ENZO LIFE SCIENCES,
INC.
Phone: 800.942.0430
[info-
usa@enzolifesciences.com](mailto:info-usa@enzolifesciences.com)

European Sales Office
ENZO LIFE SCIENCES
(ELS) AG
Phone: +41 61 926 8989
[info-
eu@enzolifesciences.com](mailto:info-eu@enzolifesciences.com)

Belgium, The Netherlands
& Luxembourg
Phone: +32 3 466 0420
[info-
fr@enzolifesciences.com](mailto:info-fr@enzolifesciences.com)

France
Phone: +33 472 440 655
[info-
fr@enzolifesciences.com](mailto:info-fr@enzolifesciences.com)

Germany
Phone: +49 7621 5500 526
[info-
de@enzolifesciences.com](mailto:info-de@enzolifesciences.com)

UK & Ireland
Phone (UK customers):
0845 601 1488
Phone: +44 1392 825900
[info-
uk@enzolifesciences.com](mailto:info-uk@enzolifesciences.com)