

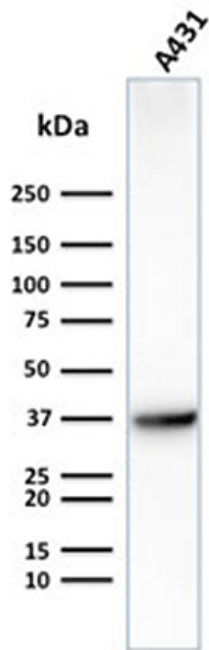
GLUT1 monoclonal antibody (2475)

Glucose transporters are integral membrane glycoproteins involved in transporting glucose into most cells. There are many types of glucose transport carrier proteins, designated as Glut1 to Glut12. Glut1 is a major glucose transporter in the mammalian blood-brain barrier. It is expressed in high density on the membranes of human erythrocytes and the brain capillaries that comprise the blood-brain barrier. Glut1 is expressed at variable levels in many human tissues. Overexpression has been linked to tumor progression or poor survival of patients with carcinomas of the colon, breast, cervical, lung, bladder and mesothelioma. Glut1 is a sensitive and specific marker for the differentiation of malignant mesothelioma (positive) from reactive mesothelium (negative).

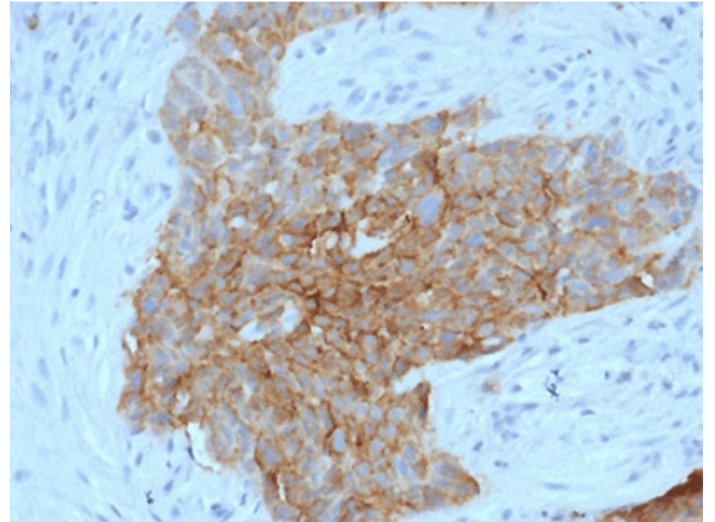
This antibody is covered by our [Worry-Free Guarantee](#).

Manuals, SDS & CofA

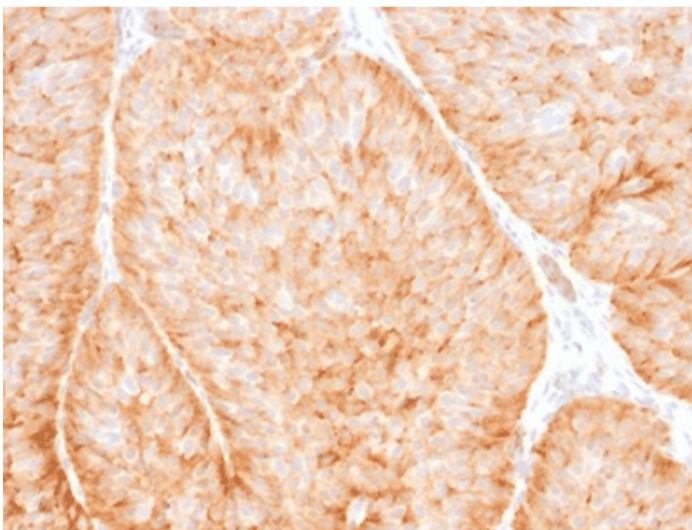
[View Online »](#)



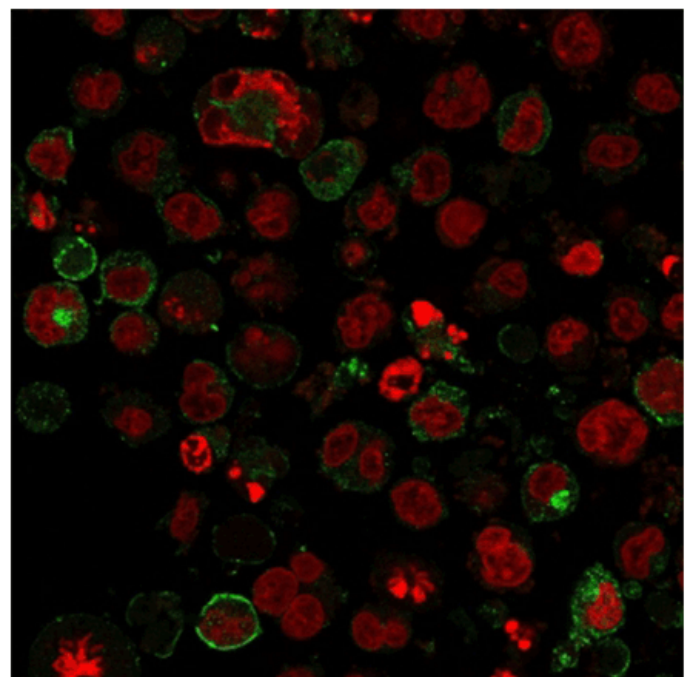
SDS-PAGE analysis of purified GLUT1 antibody.



IHC testing of human tongue with GLUT1 antibody (clone GLUT1/2475). Required HIER: boil tissue sections in 10mM citrate buffer, pH 6, for 10-20 min followed by cooling at RT for 20 min.



IHC testing of human bladder carcinoma with GLUT1 antibody (clone GLUT1/2475). Required HIER: boil tissue sections in 10mM citrate buffer, pH 6, for 10-20 min followed by cooling at RT for 20 min.



Immunofluorescent staining of human K562 cells with GLUT1 antibody (green) and Reddot nuclear stain (red).

Handling & Storage

Handling Avoid freeze/thaw cycles.

Long Term Storage -20°C

Shipping Blue Ice

Regulatory Status RUO - Research Use Only

Product Details

Alternative Name	Solute carrier family 2 facilitated glucose transporter member 1, Glucose transporter type 1 (erythrocyte/brain), HEPG2 glucose transporter
Application	ELISA, Flow Cytometry, IF, IHC, WB
Clone	2475
Formulation	Liquid. In 1X PBS containing 0.1 mg/ml BSA and 0.05% sodium azide.
Host	Mouse
Immunogen	A portion of amino acids 203-305 from the human protein was used as the immunogen for this GLUT1 antibody.
Isotype	IgG2Bk
Purity Detail	Protein G affinity purified
Species Reactivity	Human
Specificity	Recognizes a protein of 45-55kDa, which is identified as GLUT1.
UniProt ID	P11166
Worry-free Guarantee	This antibody is covered by our Worry-Free Guarantee

Last modified: May 29, 2024



ENZO LIFE SCIENCES,
INC.
Phone: 800.942.0430
[info-
usa@enzolifesciences.com](mailto:info-usa@enzolifesciences.com)

European Sales Office
ENZO LIFE SCIENCES
(ELS) AG
Phone: +41 61 926 8989
[info-
eu@enzolifesciences.com](mailto:info-eu@enzolifesciences.com)

Belgium, The Netherlands
& Luxembourg
Phone: +32 3 466 0420
[info-
be@enzolifesciences.com](mailto:info-be@enzolifesciences.com)

France
Phone: +33 472 440 655
[info-
fr@enzolifesciences.com](mailto:info-fr@enzolifesciences.com)

Germany
Phone: +49 7621 5500 526
[info-
de@enzolifesciences.com](mailto:info-de@enzolifesciences.com)

UK & Ireland
Phone (UK customers):
0845 601 1488
Phone: +44 1392 825900
[info-
uk@enzolifesciences.com](mailto:info-uk@enzolifesciences.com)