

# Estrogen receptor $\beta$ polyclonal antibody

This antibody is covered by our [Worry-Free Guarantee](#).

Citations: 8

[View Online »](#)

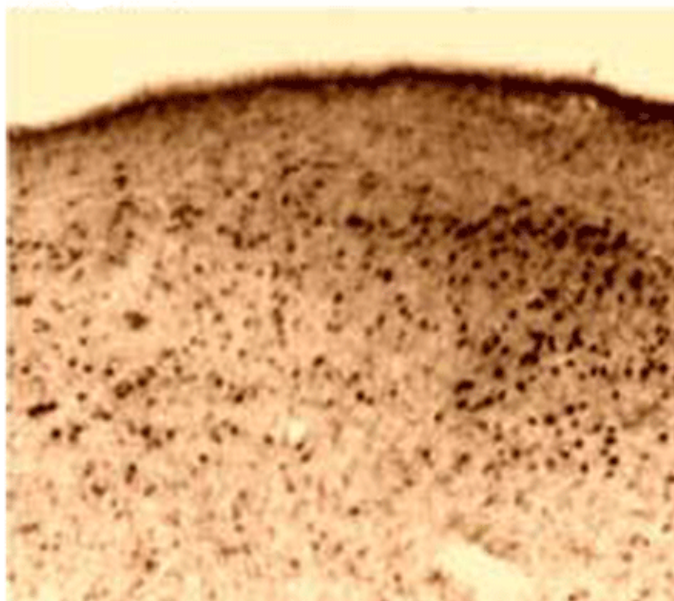
## Ordering Information

[Order Online »](#)

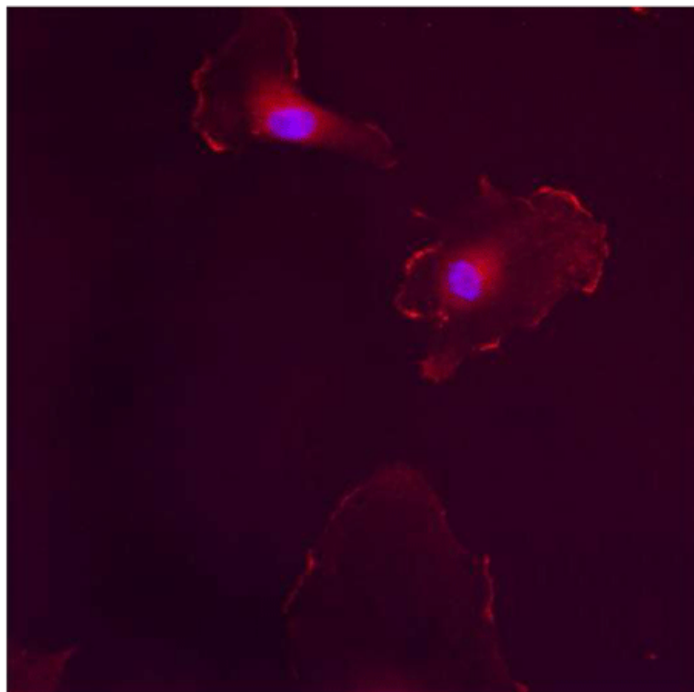
ALX-210-135-C050	50 $\mu$ g
------------------	------------

Manuals, SDS & CofA

[View Online »](#)



**Figure 2:** IHC of ER  $\beta$  in primate amygdala using Estrogen receptor  $\beta$ , pAb (Prod. No. ALX-210-135).



**Figure 1:** Estrogen receptor  $\beta$ , pAb (Prod. No. ALX-210-135) used in immunofluorescence.

## Handling & Storage

**Handling** Avoid freeze/thaw cycles.

**Long Term Storage** -20°C

**Shipping** Blue Ice

**Regulatory Status** RUO - Research Use Only

## Product Details

**Alternative Name** ER $\beta$

**Application** Gel Shift, ICC, IHC (FS), IHC (PS), WB

**Application Notes** Detects a band of ~55kDa by Western blot.

**Crossreactivity** Does not cross-react with ER $\alpha$ .

**Formulation** Liquid. In PBS containing 1mg/ml BSA and 0.05% sodium azide.

**Host** Rabbit

**Immunogen** Synthetic peptide corresponding to aa 100-115 (A100EPQKSPWCEARSLEH115) of human, mouse and rat ER $\beta$  (estrogen receptor  $\beta$ ).

**Purity Detail** Epitope-affinity purified IgG.

**Recommendation** Gel Shift Assay (1-5 $\mu$ g/ml)Immunocytochemistry (2-4 $\mu$ g/ml)Immunohistochemistry (paraffin sections, 1-2 $\mu$ g/ml)Western Blot (1-2 $\mu$ g/ml)Suggested dilutions/conditions may not be available for all applications.Optimal conditions must be determined individually for each application.

**Dilutions/Conditions**

**Species Reactivity** Human, Monkey, Mouse, Rat, Sheep

**UniProt ID** Q92731

**Worry-free Guarantee** This antibody is covered by our [Worry-Free Guarantee](#).



ENZO LIFE SCIENCES,  
INC.  
Phone: 800.942.0430  
[info-  
usa@enzolifesciences.com](mailto:info-usa@enzolifesciences.com)

European Sales Office  
ENZO LIFE SCIENCES  
(ELS) AG  
Phone: +41 61 926 8989  
[info-  
eu@enzolifesciences.com](mailto:info-eu@enzolifesciences.com)

Belgium, The Netherlands  
& Luxembourg  
Phone: +32 3 466 0420  
[info-  
be@enzolifesciences.com](mailto:info-be@enzolifesciences.com)

France  
Phone: +33 472 440 655  
[info-  
fr@enzolifesciences.com](mailto:info-fr@enzolifesciences.com)

Germany  
Phone: +49 7621 5500 526  
[info-  
de@enzolifesciences.com](mailto:info-de@enzolifesciences.com)

UK & Ireland  
Phone (UK customers):  
0845 601 1488  
Phone: +44 1392 825900  
[info-  
uk@enzolifesciences.com](mailto:info-uk@enzolifesciences.com)