

# Estrogen receptor $\alpha$ monoclonal antibody (33)

Steroid receptors are a large superfamily of ligand-dependent intracellular proteins that stimulate transcription of specific genes by binding to specific DNA sequences following activation by the appropriate hormone. Estrogen receptor (ER) has been classified into two distinct isoforms,  $\alpha$  and  $\beta$ . ER $\alpha$  is known to interact in a ligand dependent and independent manner with several known coactivators including Receptor-Interacting Protein 140 (RIP140/ERAP140), ERAP160, and Steroid Receptor Coactivator-1 (SRC-1) to enhance transcriptional activity of target genes.

This antibody is covered by our [Worry-Free Guarantee](#).

Citations: 5

[View Online »](#)

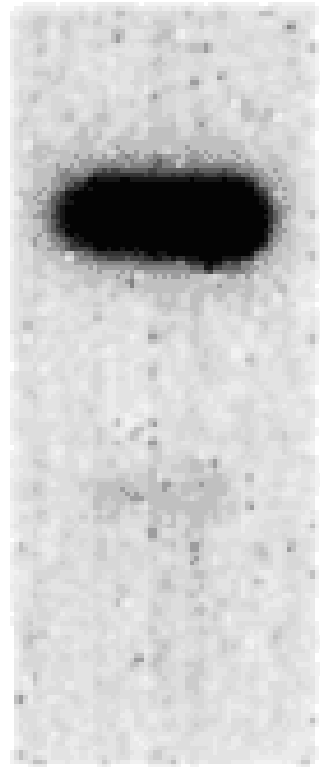
Manuals, SDS & CofA

[View Online »](#)

# Fig. 1

67 kDa

56 kDa



**Figure:** Western blot of recombinant ER $\alpha$  using MAb to Estrogen Receptor  $\alpha$  (33) (Prod. No. [ALX-803-004](#)).  
Western blot, Estrogen receptor  $\alpha$  monoclonal antibody (33) Western blot, yes

ALX-803-005, 803-

005\_color.gif, [http://static.enzolifesciences.com/fileadmin/files/image/803-](http://static.enzolifesciences.com/fileadmin/files/image/803-005_color.gif)

005\_color.gif, **Figure:** Immunohistochemical staining of PRL receptor in rat Islets of Langerhans using MAb to Prolactin Receptor (U5) (Prod. No. [ALX-803-005](#)).

## Handling & Storage

**Handling** Avoid freeze/thaw cycles.

**Long Term Storage** -20°C

**Shipping** Blue Ice

**Regulatory Status** RUO - Research Use Only

## Product Details

**Alternative Name** ER $\alpha$

**Application** Flow Cytometry, ICC, IF, IHC (FS), IHC (PS), IP, WB

**Application Notes** Immunohistochemistry: Staining of ER $\alpha$  in mouse Leydig cells results in both nuclear and cytoplasmic staining. Detects a band of ~67kDa by Western blot. Does not inhibit binding of ER to nuclei and DNA.

**Clone** 33

**Crossreactivity** Does not cross-react with androgen receptor, PR (progesterone receptor), GR (glucocorticoid receptor) or ER $\beta$ .

**Formulation** Liquid. In Dulbecco's PBS, containing 0.05% sodium azide, 1mg/mL BSA and 30% glycerol.

**Host** Mouse

**Immunogen** Synthetic peptide corresponding to aa 247-261 (E247VGMMKGGIRKDRRG261) of the DNA binding domain of ER $\alpha$  (estrogen receptor  $\alpha$ ). This sequence is completely conserved in many species including mouse, rat, pig, bovine, sheep, chicken and frog.

**Isotype** IgG1

**Recommendation Dilutions/Conditions** Immunofluorescence (10 $\mu$ g/mL) Immunohistochemistry (1:20-1:100) Western Blot (4  $\mu$ g/ml) Suggested dilutions/conditions may not be available for all applications. Optimal conditions must be determined individually for each application.

**Species Reactivity**

Bovine, Human, Monkey, Mouse, Rat

**Specificity**Recognizes both the steroid occupied and unoccupied forms of ER $\alpha$ .**UniProt ID**

P03372

**Worry-free Guarantee**This antibody is covered by our [Worry-Free Guarantee](#)**Last modified: May 29, 2024**

ENZO LIFE SCIENCES,  
INC.  
Phone: 800.942.0430  
[info-usa@enzolifesciences.com](mailto:info-usa@enzolifesciences.com)

European Sales Office  
ENZO LIFE SCIENCES  
(ELS) AG  
Phone: +41 61 926 8989  
[info-eu@enzolifesciences.com](mailto:info-eu@enzolifesciences.com)

Belgium, The Netherlands  
& Luxembourg  
Phone: +32 3 466 0420  
[info-be@enzolifesciences.com](mailto:info-be@enzolifesciences.com)

France  
Phone: +33 472 440 655  
[info-fr@enzolifesciences.com](mailto:info-fr@enzolifesciences.com)

Germany  
Phone: +49 7621 5500 526  
[info-de@enzolifesciences.com](mailto:info-de@enzolifesciences.com)

UK & Ireland  
Phone (UK customers):  
0845 601 1488  
Phone: +44 1392 825900  
[info-uk@enzolifesciences.com](mailto:info-uk@enzolifesciences.com)