

ERp72 polyclonal antibody

Endoplasmic reticulum protein (ERp) 72, a 72 kDa protein localized to the endoplasmic reticulum, is a member of the Protein Disulfide Isomerase (PDI) family of proteins. Together with other ER resident proteins such as BiP, GRP94, and PDI, they serve as the molecular chaperones for proper folding of newly translocated and glycosylated proteins such as Thyroglobulin (Tg) and Human chorionic gonadotropin (hCG)-beta.

This antibody is covered by our [Worry-Free Guarantee](#).

Citations: 14

[View Online »](#)

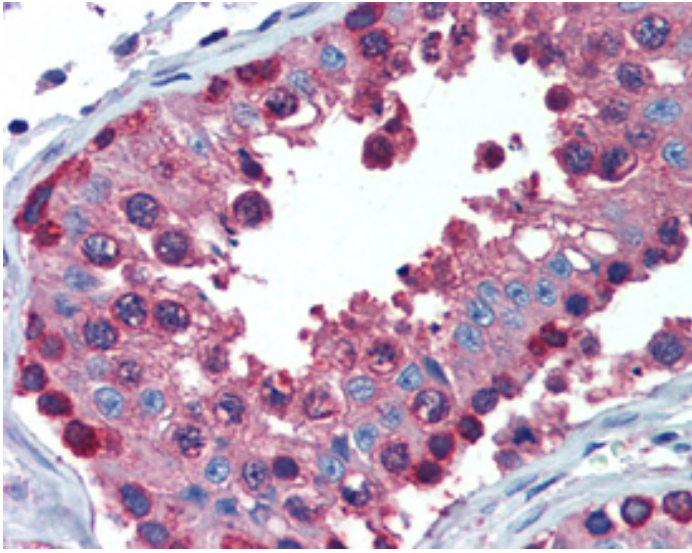
Ordering Information

[Order Online »](#)

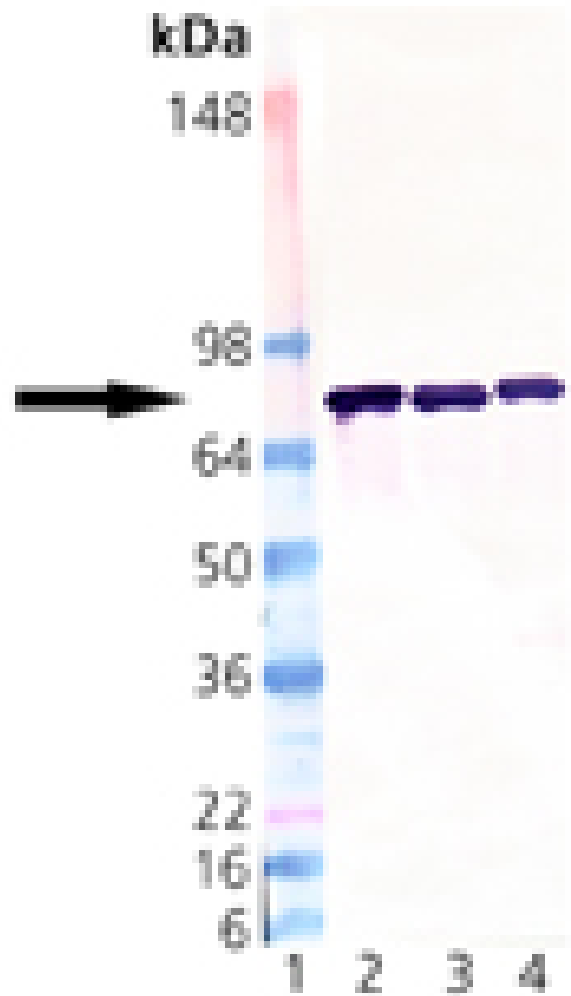
ADI-SPS-720-D	50µg
---------------	------

Manuals, SDS & CofA

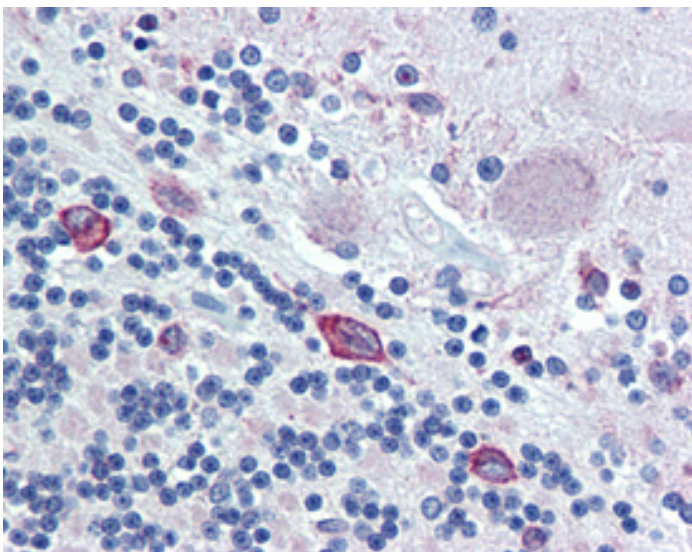
[View Online »](#)



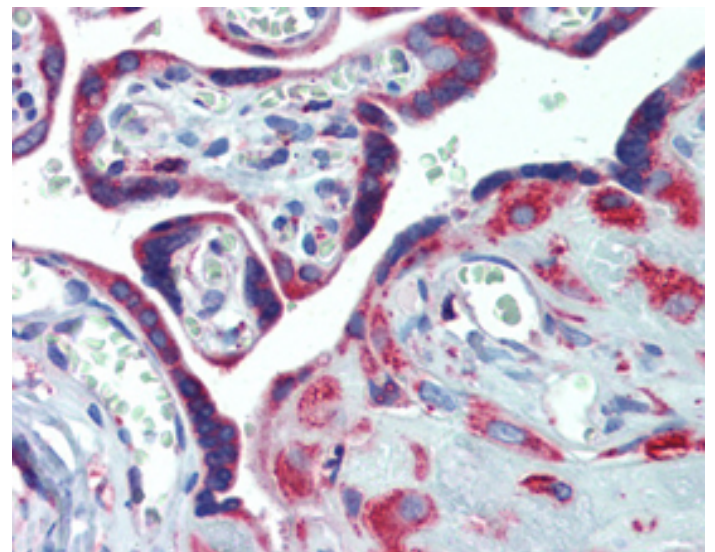
IHC Analysis: Human testis tissue stained with ERp72, pAb at 10µg/ml.



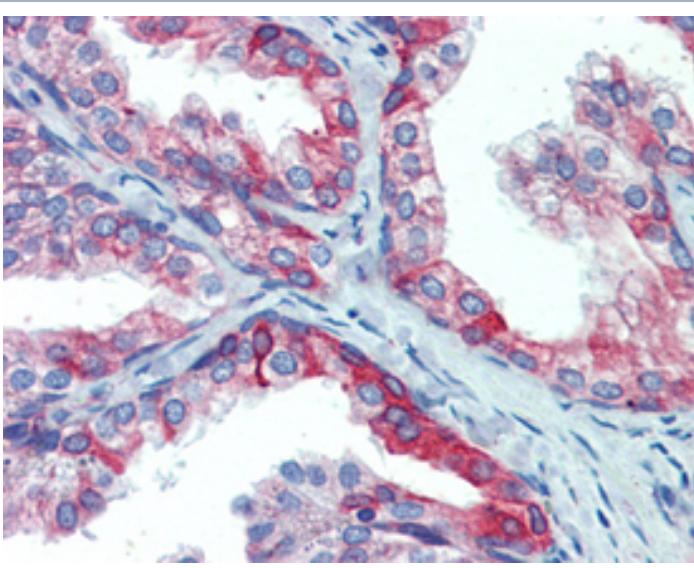
Western blot analysis of ERp72: Lane 1: MW Marker, Lane 2: Rat Liver Microsome Extract, Lane 3: Mouse Liver Microsome Extract, Lane 4: Human Liver Microsome Extract.



IHC Analysis: Human brain, cerebellum tissue stained with ERp72, pAb at 10µg/ml.



IHC Analysis: Human placenta tissue stained with ERp72, pAb at 10µg/ml.



IHC Analysis: Human prostate tissue stained with ERp72, pAb at 10 μ g/ml.

Handling & Storage

Handling Avoid freeze/thaw cycles.

Long Term Storage -20°C

Shipping Blue Ice

Regulatory Status RUO - Research Use Only

Product Details

Alternative Name PDIA4, ERP70, protein disulfide isomerase

Application IF, IHC (PS), WB

Application Notes Detects a band of ~72kDa by Western blot.

Formulation Liquid. In PBS containing 50% glycerol and 0.09% sodium azide.

Host Rabbit

Immunogen Synthetic peptide corresponding to aa 623-638 of mouse ERp72.

Purity Detail Protein A affinity purified.

Recommendation Dilutions/Conditions Western Blot (1:1,000, colorimetric) Suggested dilutions/conditions may not be available for all applications. Optimal conditions must be determined individually for each application.

Source Purified from rabbit serum.

Species Reactivity Bovine, Dog, Guinea pig, Hamster, Human, Monkey, Mouse, Rabbit, Rat

Technical Info / Product Notes Recommended by the Human Protein Atlas Organization for IHC (Ensembl No. ENSG00000155660).

UniProt ID P08003

Last modified: May 29, 2024



ENZO LIFE SCIENCES,
INC.
Phone: 800.942.0430
[info-
usa@enzolifesciences.com](mailto:info-usa@enzolifesciences.com)

European Sales Office
ENZO LIFE SCIENCES
(ELS) AG
Phone: +41 61 926 8989
[info-
eu@enzolifesciences.com](mailto:info-eu@enzolifesciences.com)

Belgium, The Netherlands
& Luxembourg
Phone: +32 3 466 0420
[info-
be@enzolifesciences.com](mailto:info-be@enzolifesciences.com)

France
Phone: +33 472 440 655
[info-
fr@enzolifesciences.com](mailto:info-fr@enzolifesciences.com)

Germany
Phone: +49 7621 5500 526
[info-
de@enzolifesciences.com](mailto:info-de@enzolifesciences.com)

UK & Ireland
Phone (UK customers):
0845 601 1488
Phone: +44 1392 825900
[info-
uk@enzolifesciences.com](mailto:info-uk@enzolifesciences.com)