

EpCAM recombinant monoclonal antibody (28)

Epithelial Cell Adhesion Molecule (EpCAM) is a cell surface protein involved in cell adhesion, proliferation, and differentiation. It is overexpressed in many epithelial cancers, making it a significant marker for tumor detection, cancer stem cells, and targeted therapies in oncology.

This antibody is covered by our [Worry-Free Guarantee](#).

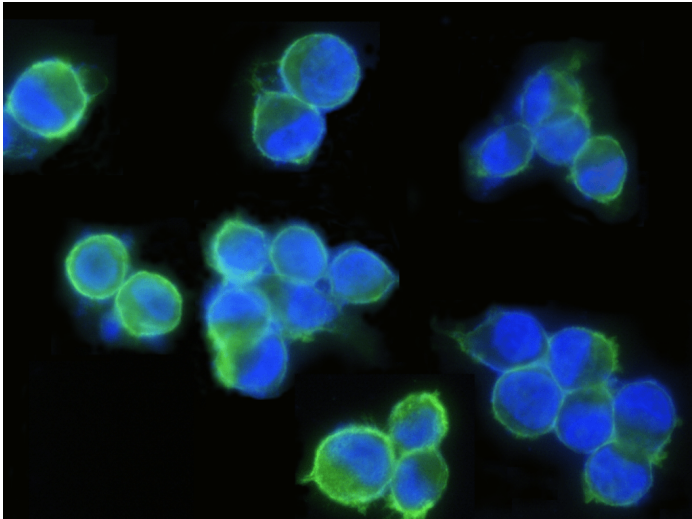
Ordering Information

[Order Online »](#)

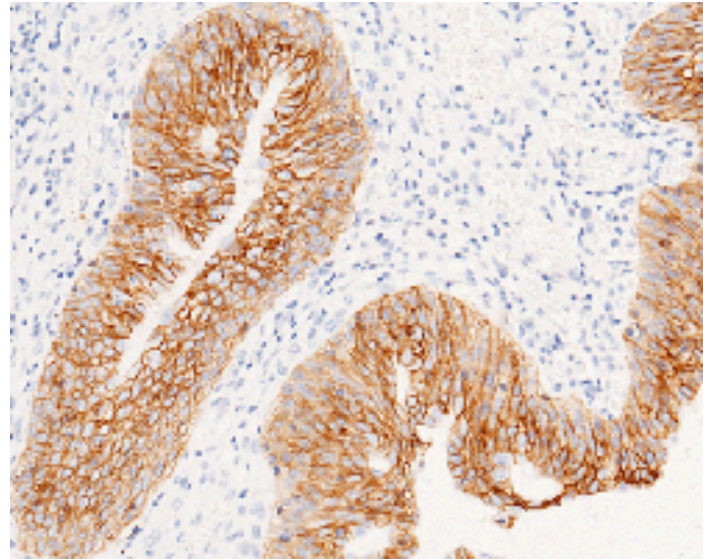
ENZ-ABS1031-0100	100µl
------------------	-------

Manuals, SDS & CofA

[View Online »](#)



Immunofluorescence staining of Human EpCAM in SKBR3 cells. Cells were fixed with 4% PFA, blocked with 10% serum, and incubated with Rabbit anti-Human EpCAM monoclonal antibody (1:500) at 4°C overnight. Then cells were stained with the Alexa Fluor® 488-conjugated Goat Anti-rabbit IgG secondary antibody (green) and counterstained with DAPI (blue). Positive staining was localized to plasma membrane.



Immunochemical staining of human EpCAM in human bladder carcinoma with rabbit monoclonal antibody at 1:2500 dilution, formalin-fixed paraffin embedded sections. Positive staining was localized to membrane of transitional epithelium.

Handling & Storage

Handling Avoid freeze-thaw cycles.

Long Term Storage -20°C

Shipping Blue Ice

Regulatory Status RUO - Research Use Only

Product Details

Alternative Name Epithelial cell adhesion molecule, TROP-1, TACSTD1

Application ELISA, Flow Cytometry, ICC, IF, IHC (PS), IP, WB

Clone 28

Crossreactivity No cross-reactivity in ELISA with human CD146 / MCAM, human CD171 / N-CAML1 / L1CAM, human OBCAM / OPCML, human TROP2 / TACSTD2.

Formulation Liquid. 0.2 µm filtered solution in PBS. Preservative free. Carrier-free.

Host Rabbit

Immunogen Recombinant human EpCAM / TROP1.

Isotype IgG

Purity Detail Protein A purified.

Recommendation Dilutions/Conditions ELISA (1:25'000-1:50'000)Immunohistochemistry (paraffin sections) (1:1'000-1:5'000)Western Blot (1:500-1:1'000)Immunocytochemistry / Immunofluorescence (1:250-1:5'000)Flow Cytometry (1:100-1:500)Immunoprecipitation (0.2-1 µL/mg of lysate)Suggested dilutions/conditions may not be available for all applications.Optimal conditions must be determined individually for each application.

Species Reactivity Human

Worry-free Guarantee This antibody is covered by our [Worry-Free Guarantee](#).



ENZO LIFE SCIENCES,
INC.
Phone: 800.942.0430
[info-
usa@enzolifesciences.com](mailto:info-usa@enzolifesciences.com)

European Sales Office
ENZO LIFE SCIENCES
(ELS) AG
Phone: +41 61 926 8989
[info-
eu@enzolifesciences.com](mailto:info-eu@enzolifesciences.com)

Belgium, The Netherlands
& Luxembourg
Phone: +32 3 466 0420
[info-
fr@enzolifesciences.com](mailto:info-fr@enzolifesciences.com)

France
Phone: +33 472 440 655
[info-
fr@enzolifesciences.com](mailto:info-fr@enzolifesciences.com)

Germany
Phone: +49 7621 5500 526
[info-
de@enzolifesciences.com](mailto:info-de@enzolifesciences.com)

UK & Ireland
Phone (UK customers):
0845 601 1488
Phone: +44 1392 825900
[info-
uk@enzolifesciences.com](mailto:info-uk@enzolifesciences.com)