

EpCAM recombinant monoclonal antibody (002)

This antibody is covered by our [Worry-Free Guarantee](#).

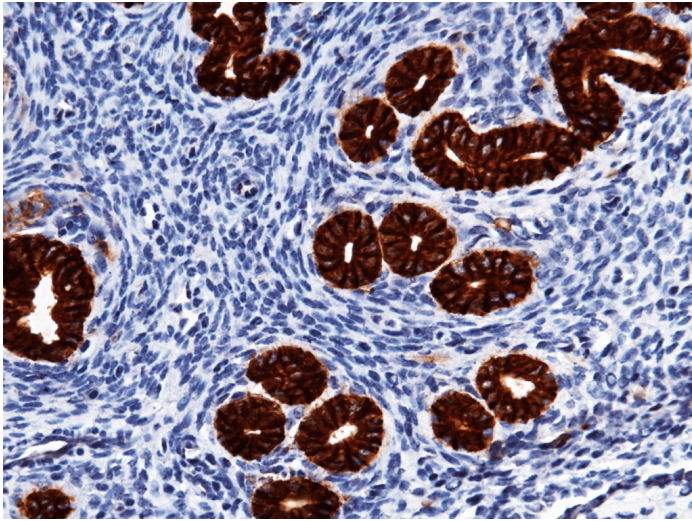
Ordering Information

[Order Online »](#)

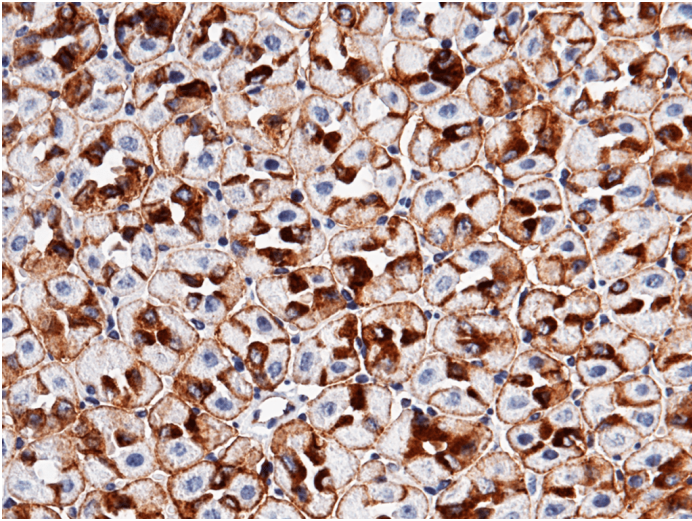
ENZ-ABS1021-0100	100µl
------------------	-------

Manuals, SDS & CofA

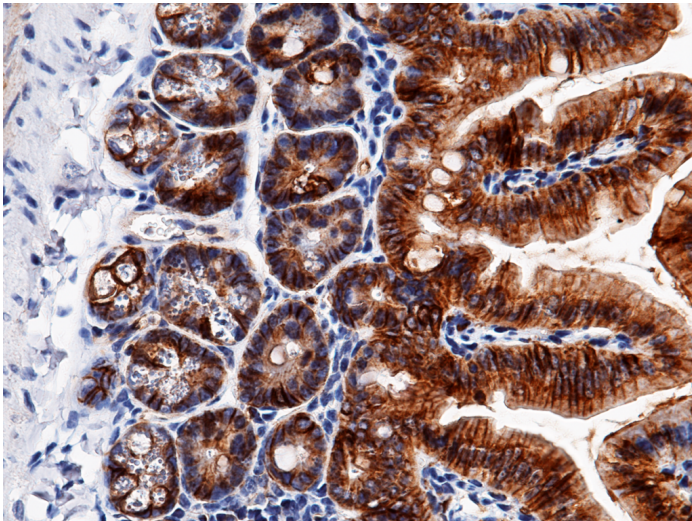
[View Online »](#)



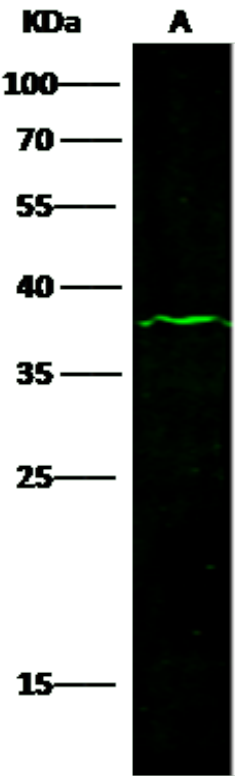
Immunochemical staining of mouse EpCAM in mouse uterus with rabbit monoclonal antibody at 1:1000 dilution, formalin-fixed paraffin embedded sections.



Immunochemical staining of mouse EpCAM in mouse stomach with rabbit monoclonal antibody at 1:1000 dilution, formalin-fixed paraffin embedded sections.



Immunochemical staining of mouse EpCAM in mouse intestine with rabbit monoclonal antibody at 1:1000 dilution, formalin-fixed paraffin embedded sections.



Anti-EPCAM rabbit monoclonal antibody at 1:500 dilution Lane A: 293T Whole Cell Lysate. Lysates/proteins at 30 µg per lane. Secondary Goat Anti-Rabbit IgG H&L (Dylight800) at 1/10000 dilution. Developed using the Odyssey technique. Performed under reducing conditions. Observed band size:38 kDa.

Handling & Storage

Handling	Protected from light. Avoid freeze-thaw cycles.
Long Term Storage	-20°C
Shipping	Blue Ice

Regulatory Status

RUO - Research Use Only

Product Details

Alternative Name	Epithelial cell adhesion molecule, TROP-1, TACSTD1
Application	ELISA, IHC (PS), WB
Clone	002
Formulation	Liquid. 0.2 µm filtered solution in PBS. Preservative free.
Host	Rabbit
Immunogen	Recombinant mouse EpCAM / TROP-1 / TACSTD1 protein.
Isotype	IgG
Purity Detail	Protein A purified.
Recommendation Dilutions/Conditions	Western Blot (1:500-1:1'000)Immunohistochemistry (paraffin sections) (1:500-1:2'000)ELISA (1:25'000-1:5'0000)ELISA (Detectino)(1:5'000-1:5'0000)Suggested dilutions/conditions may not be available for all applications.Optimal conditions must be determined individually for each application.
Species Reactivity	Mouse
Worry-free Guarantee	This antibody is covered by our Worry-Free Guarantee .



ENZO LIFE SCIENCES,
INC.
Phone: 800.942.0430
[info-
usa@enzolifesciences.com](mailto:info-usa@enzolifesciences.com)

European Sales Office
ENZO LIFE SCIENCES
(ELS) AG
Phone: +41 61 926 8989
[info-
eu@enzolifesciences.com](mailto:info-eu@enzolifesciences.com)

Belgium, The Netherlands
& Luxembourg
Phone: +32 3 466 0420
[info-
be@enzolifesciences.com](mailto:info-be@enzolifesciences.com)

France
Phone: +33 472 440 655
[info-
fr@enzolifesciences.com](mailto:info-fr@enzolifesciences.com)

Germany
Phone: +49 7621 5500 526
[info-
de@enzolifesciences.com](mailto:info-de@enzolifesciences.com)

UK & Ireland
Phone (UK customers):
0845 601 1488
Phone: +44 1392 825900
[info-
uk@enzolifesciences.com](mailto:info-uk@enzolifesciences.com)