

# Endothelin receptor

## ET<sub>A</sub> polyclonal antibody

Endothelins are vasoactive peptides that exist in three forms (ET-1, ET-2, and ET-3), and function in the maintenance of vascular tone via two identified seven transmembrane-spanning domain-containing G protein-coupled receptors (GPCR), endothelin A (ETA) and endothelin B (ETB). The human ETA receptor is primarily expressed in vascular smooth muscle cells, including those of the heart (also in myocytes), lung, and brain, and its stimulation generally results in vasoconstriction. Activation of ETA receptors can be stimulated by binding of ET-1 and ET-2, but not ET-3, triggering the release of vasorelaxive factors such as nitric oxide (NO) and prostanoids from endothelial cells. Human ETB receptors are primarily expressed in endothelial cells lining the vessel walls of the lungs, heart, and brain, and in contrast to ETA receptors, stimulation generally results in transient vasodilation. Activation of ETB receptors can be stimulated by binding of all three endothelins, triggering the release of vasorelaxive factors such as nitric oxide (NO) and prostanoids from endothelial cells. Both ETA and ETB receptors signal primarily via coupling to Gq/11 alpha subunits, although Gi/o and Gs coupling are also established mechanisms of endothelin signaling, resulting in stimulation of phospholipases C, A2, and D.

This antibody is covered by our [Worry-Free Guarantee](#).

Citations: 1

[View Online »](#)

### Ordering Information

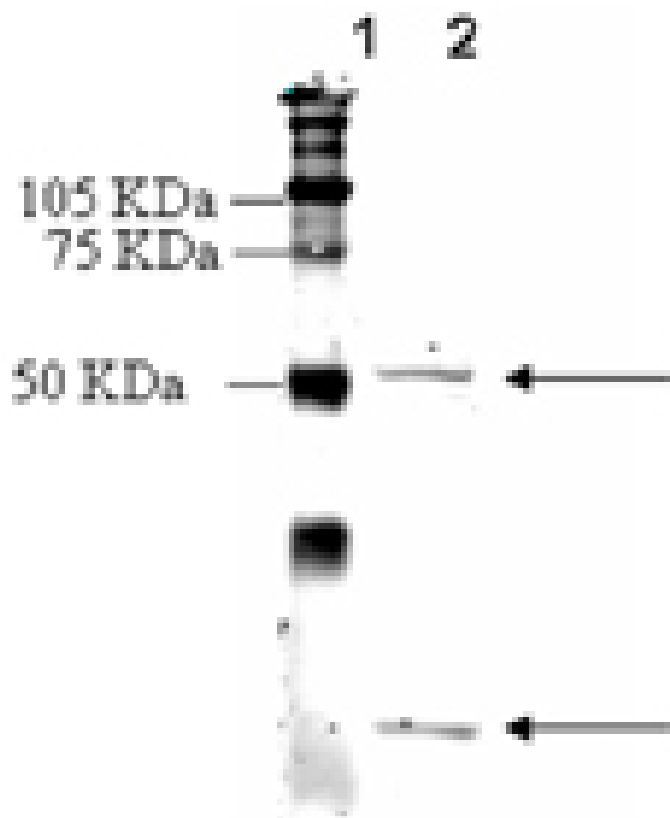
[Order Online »](#)

ADI-905-790-100

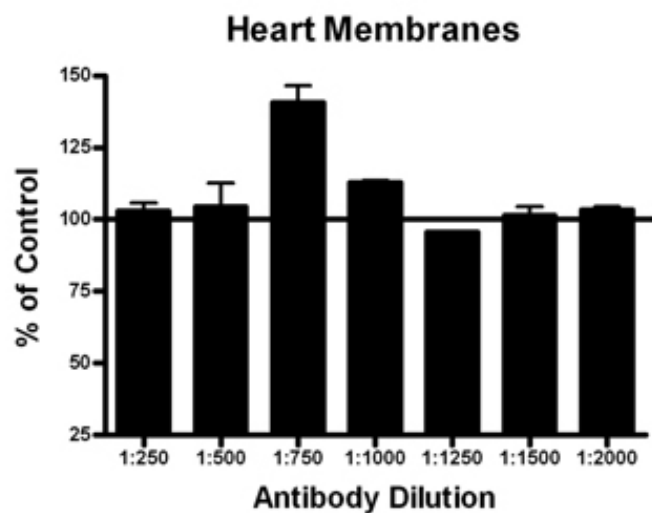
100µg

### Manuals, SDS & CofA

[View Online »](#)



Western blot analysis: MW marker (1) and 50µg of rat heart membrane extract (2) probed with Endothelin Receptor (ETA) pAb at 2.7µg/ml



Membrane ELISA: Lewis rat heart membranes (5µg/well) were treated with 1 µM concentrations of agonist (ET-1) and probed with receptor antibody (1:250 to 1:2000 of a 1µg/µl stock solution) by ELISA. Data from vehicle treated cells were taken as 100%. Results are the mean ± SEM (n=4).

# Handling & Storage

Handling Keep on ice at all times.

Long Term Storage -20°C

Shipping Blue Ice

## Regulatory Status

RUO - Research Use Only

## Product Details

Alternative Name EDNRA, ETA

Application ELISA, IHC, WB

Application Notes Suitable for membrane-based ELISA.  
Predicted MW of ~48kDa and ~21kDa (C-13 alternative splice variant) species are membrane integrated, with higher MW species observed by Western blot due to postranslational modification or heterodimerization of the receptor.

Crossreactivity Predicted species reactivity based on epitope sequence homology: human, mouse, dog, horse, rhesus macaque, bovine, chimpanzee, platypus, wild boar, opossum, rabbit.

Formulation Liquid. In PBS containing 50% glycerol and 0.01% sodium azide.

Host Rabbit

Immunogen Synthetic peptide corresponding to the sequence near the N-terminus of rat endothelin receptor ETA.

Purity Detail Peptide affinity purified.

Species Reactivity Rat

UniProt ID P26684

Worry-free Guarantee This antibody is covered by our [Worry-Free Guarantee](#).



ENZO LIFE SCIENCES,  
INC.  
Phone: 800.942.0430  
[info-  
usa@enzolifesciences.com](mailto:info-usa@enzolifesciences.com)

European Sales Office  
ENZO LIFE SCIENCES  
(ELS) AG  
Phone: +41 61 926 8989  
[info-  
eu@enzolifesciences.com](mailto:info-eu@enzolifesciences.com)

Belgium, The Netherlands  
& Luxembourg  
Phone: +32 3 466 0420  
[info-  
be@enzolifesciences.com](mailto:info-be@enzolifesciences.com)

France  
Phone: +33 472 440 655  
[info-  
fr@enzolifesciences.com](mailto:info-fr@enzolifesciences.com)

Germany  
Phone: +49 7621 5500 526  
[info-  
de@enzolifesciences.com](mailto:info-de@enzolifesciences.com)

UK & Ireland  
Phone (UK customers):  
0845 601 1488  
Phone: +44 1392 825900  
[info-  
uk@enzolifesciences.com](mailto:info-uk@enzolifesciences.com)