

# Endothelin A receptor polyclonal antibody

Endothelins are a family of peptides that are potent vasoconstrictors produced by mammalian vascular endothelial cells. The receptors for the endothelins are found on various tissues including, but not restricted to, lung and intestine.

This antibody is covered by our [Worry-Free Guarantee](#).

Citations: 12

[View Online »](#)

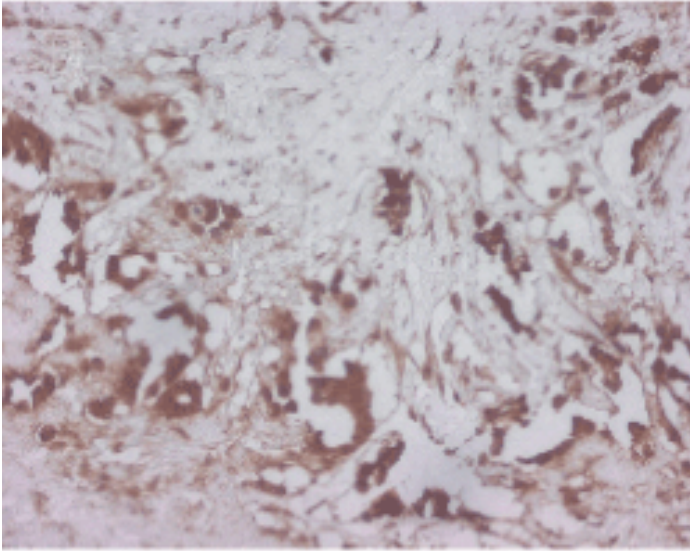
Ordering Information

[Order Online »](#)

ALX-210-507A-C250	250µg
-------------------	-------

Manuals, SDS & CofA

[View Online »](#)



**Figure:** Immunohistochemical staining of invasive ductal carcinoma (G2) using PAb to Endothelin A Receptor (Prod. No. [ALX-210-507A](#)). Expression can be seen in the cytoplasm and in the cell membrane. """, Endothelin A receptor polyclonal antibody Immunohistochemistry, Endothelin A receptor polyclonal antibody Immunohistochemistry, yes

ALX-210-509,210-

509\_1.gif,<http://static.enzolifesciences.com/fileadmin/files/image/210->

509\_1.gif,**Figure:** Immunolocalization of endothelial nitric oxide synthase (eNOS; NOS III) in human lung tissue using PAb to eNOS (Prod. No. [ALX-210-509](#)).''''''''

tissue using PAb to eNOS (Prod. No. [ALX-210-509](#)).''''''''

## Handling & Storage

Handling	Avoid freeze/thaw cycles. After opening, prepare aliquots and store at -20°C.
Short Term Storage	+4°C
Long Term Storage	-20°C
Shipping	Blue Ice

## Regulatory Status

RUO - Research Use Only

## Product Details

Alternative Name	ETA-receptor
Application	IHC, WB
Application Notes	As this antibody is generated against the cytosolic portion of endothelin A receptor, permeabilization is required for immunochemical analysis. Detects bands of 34-52kDa by Western blot. Does not block the binding of endothelins to the receptor.
Formulation	Liquid. In TRIS-citrate-phosphate, pH 7-8, containing 0.1% sodium azide.
Host	Sheep
Immunogen	Synthetic peptide corresponding to aa 410-422 (Q410EQNHNTERTSSHK422) of C-terminal rat ETA-receptor (endothelin A receptor).
Purity Detail	Epitope-affinity purified.
Recommendation Dilutions/Conditions	Immunohistochemistry (paraffin sections, 4µg/ml)Western Blot (10-20µg/ml using ECL)Suggested dilutions/conditions may not be available for all applications.Optimal conditions must be determined individually for each application.
Species Reactivity	Human, Mouse, Rat
Specificity	Recognizes an epitope on the cytoplasmic side of the ET <sub>A</sub> -receptor.



ENZO LIFE SCIENCES  
INC.  
Phone: 800.942.0430  
[info-usa@enzolifesciences.com](mailto:info-usa@enzolifesciences.com)

P26684

European Sales Office  
ENZO LIFE SCIENCES  
(ELS) AG  
Phone: +41 61 926 8989  
[info-eu@enzolifesciences.com](mailto:info-eu@enzolifesciences.com)

Belgium, The Netherlands  
& Luxembourg  
Phone: +32 3 466 0420  
[info-fr@enzolifesciences.com](mailto:info-fr@enzolifesciences.com)

France  
Phone: +33 472 440 655  
[info-fr@enzolifesciences.com](mailto:info-fr@enzolifesciences.com)

Germany  
Phone: +49 7621 5500 526  
[info-de@enzolifesciences.com](mailto:info-de@enzolifesciences.com)

UK & Ireland  
Phone (UK customers):  
0845 601 1488  
Phone: +44 1392 825900  
[info-uk@enzolifesciences.com](mailto:info-uk@enzolifesciences.com)

Worry-free Guarantee

This antibody is covered by our **Worry-Free Guarantee.**