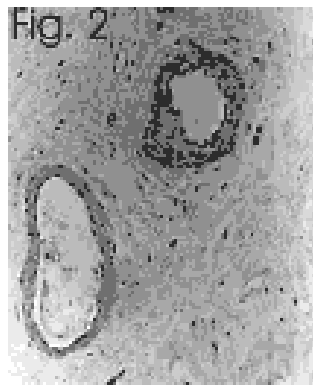
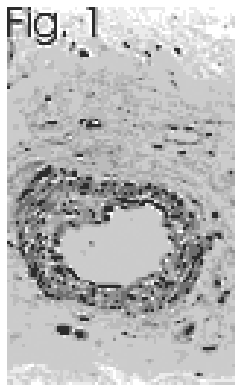


Endothelin-1 monoclonal antibody (TR.ET.48.5)

This antibody is covered by our [Worry-Free Guarantee](#).

Manuals, SDS & CofA

[View Online »](#)



Figures 1 and 2: Immunolocalization of ET-1 in human bowel using MAb to Endothelin-1 (TR.ET.48.5) (Prod. No. [ALX-803-001](#)).^{1,2,3,4,5,6,7,8,9,10,11,12,13,14,15,16,17,18,19,20,21,22,23,24,25,26,27,28,29,30,31,32,33,34,35,36,37,38,39,40,41,42,43,44,45,46,47,48,49,50,51,52,53,54,55,56,57,58,59,60,61,62,63,64,65,66,67,68,69,70,71,72,73,74,75,76,77,78,79,80,81,82,83,84,85,86,87,88,89,90,91,92,93,94,95,96,97,98,99,100}, Endothelin-1 monoclonal antibody (TR.ET.48.5) Immunolocalization, Endothelin-1 monoclonal antibody (TR.ET.48.5) Immunolocalization, yes
ALX-803-003, 803-003.gif, <http://static.enzolifesciences.com/fileadmin/files/image/803-003.gif>, **Figure:** Immunohistochemical staining of PRL1 receptor in NB2 cells using MAb to Prolactin Receptor (rat) (T6) (Prod. No. [ALX-803-003](#)).^{1,2,3,4,5,6,7,8,9,10,11,12,13,14,15,16,17,18,19,20,21,22,23,24,25,26,27,28,29,30,31,32,33,34,35,36,37,38,39,40,41,42,43,44,45,46,47,48,49,50,51,52,53,54,55,56,57,58,59,60,61,62,63,64,65,66,67,68,69,70,71,72,73,74,75,76,77,78,79,80,81,82,83,84,85,86,87,88,89,90,91,92,93,94,95,96,97,98,99,100}

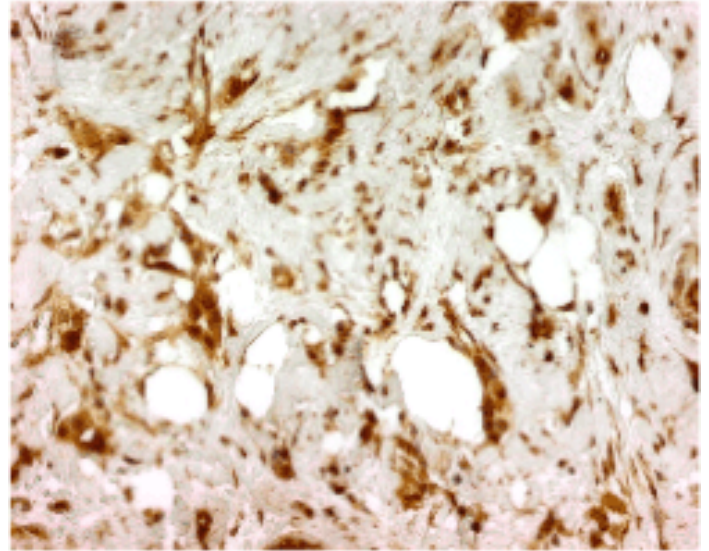


Figure 3: Immunohistochemical staining of invasive ductal carcinoma (G2) using PAb to Endothelin-1 (TR.ET.48.5) (Prod. No. ALX-803-001). Expression can be seen in the cytoplasm of tubular tumor structures.

Handling & Storage

Handling Avoid freeze/thaw cycles.

Long Term Storage -20°C

Shipping Blue Ice

Regulatory Status RUO - Research Use Only

Product Details

Alternative Name ET-1

Application ICC, IHC (PS), Radioimmunoassay, WB

Clone TR.ET.48.5

Crossreactivity Cross-reacts slightly with related peptides.

Formulation Liquid. In PBS containing 0.05% sodium azide.

Host Mouse

Immunogen Purified human ET-1 (endothelin-1).

Isotype IgG1

Purity Detail Affinity-purified.

Recommendation Dilutions/Conditions Immunohistochemistry (paraffin sections, 1:300)Immunohistochemistry (frozen sections, 1:250)Radioimmuno Assay (1:25,000; use to concentrate ET-1 in solution, e.g. serum/plasma, milk, urine)Suggested dilutions/conditions may not be available for all applications.Optimal conditions must be determined individually for each application.

Species Reactivity Human, Rat, Sheep

Specificity Recognizes epitope aa 8-16 of endothelin-1.

UniProt ID P05305

Last modified: May 29, 2024



ENZO LIFE SCIENCES,
INC.
Phone: 800.942.0430
[info-
usa@enzolifesciences.com](mailto:info-usa@enzolifesciences.com)

European Sales Office
ENZO LIFE SCIENCES
(ELS) AG
Phone: +41 61 926 8989
[info-
eu@enzolifesciences.com](mailto:info-eu@enzolifesciences.com)

Belgium, The Netherlands
& Luxembourg
Phone: +32 3 466 0420
[info-
be@enzolifesciences.com](mailto:info-be@enzolifesciences.com)

France
Phone: +33 472 440 655
[info-
fr@enzolifesciences.com](mailto:info-fr@enzolifesciences.com)

Germany
Phone: +49 7621 5500 526
[info-
de@enzolifesciences.com](mailto:info-de@enzolifesciences.com)

UK & Ireland
Phone (UK customers):
0845 601 1488
Phone: +44 1392 825900
[info-
uk@enzolifesciences.com](mailto:info-uk@enzolifesciences.com)