

Dynasore

GTPase inhibitor

Small molecule GTPase inhibitor targeting Dynamin-1, Dynamin-2 and Drp1 (mitochondrial Dynamin). Noncompetitive inhibitor of Dynamin GTPase activity. Blocks Dynamin-dependent endocytosis in cells (including neurons). Fast acting (seconds). Strong, dose dependent block of the traffic and accumulation of transferrin with 80µM dynasore ($IC_{50} = 15\mu M$). Has also been shown to block human papillomavirus type 16 (HPV16) and bovine papillomavirus type 1 (BPV1) (pseudovirions) infections.

Citations: 18

[View Online »](#)

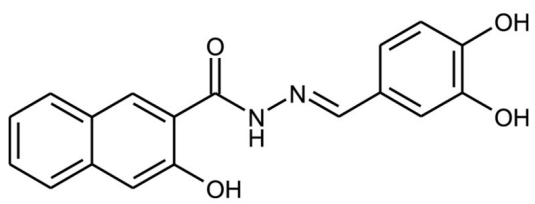
Ordering Information

[Order Online »](#)

ALX-270-502-M005	5mg
ALX-270-502-M025	25mg

Manuals, SDS & CofA

[View Online »](#)



Handling & Storage

Use/Stability	As indicated on product label or CoA when stored as recommended. Stock solutions are stable for up to 3 months when stored at -20°C.
Handling	Protect from light. Keep under inert gas.
Short Term Storage	-20°C
Long Term Storage	-20°C
Shipping	Ambient Temperature

Regulatory Status

RUO - Research Use Only

Product Details

Appearance	Off-white solid.
CAS	304448-55-3
Couple Target	Dynamin, GTPase
Couple Type	Inhibitor
Formula	$C_{18}H_{14}N_2O_4$
MW	322.3
Purity	≥98% (HPLC, TLC)
Solubility	Soluble in 100% ethanol (1mg/ml) or DMSO (10mg/ml); insoluble in water.



ENZO LIFE SCIENCES,
INC.
Phone: 800.942.0430
[info-
usa@enzolifesciences.com](mailto:info-usa@enzolifesciences.com)

European Sales Office
ENZO LIFE SCIENCES
(ELS) AG
Phone: +41 61 926 8989
[info-
eu@enzolifesciences.com](mailto:info-eu@enzolifesciences.com)

Belgium, The Netherlands
& Luxembourg
Phone: +32 3 466 0420
[info-
be@enzolifesciences.com](mailto:info-be@enzolifesciences.com)

France
Phone: +33 472 440 655
[info-
fr@enzolifesciences.com](mailto:info-fr@enzolifesciences.com)

Germany
Phone: +49 7621 5500 526
[info-
de@enzolifesciences.com](mailto:info-de@enzolifesciences.com)

UK & Ireland
Phone (UK customers):
0845 601 1488
Phone: +44 1392 825900
[info-
uk@enzolifesciences.com](mailto:info-uk@enzolifesciences.com)