

Dopamine receptor D₂ polyclonal antibody

Dopamine is the predominant catecholamine neurotransmitter in the mammalian brain, where it regulates locomotor, emotional, memory, and dietary intake functions, as well as peripheral roles such as hormone secretion and renal function. Dopamine receptors (D1-D5) are members of the seven transmembrane domain containing GPCR family, and are the target of several anti-psychosis and anti-Parkinsonian drugs. The D2, D3, and D4 receptors signal via coupling of Gi/Go alpha G-protein subunits to inhibit adenylyl cyclase activity and modulate cellular potassium and calcium ion channel conductance. Expression of the D2 receptor is found primarily in the brain (striatum, olfactory tubercle, and nucleus accumbens) and in the anterior and intermediate lobes of the pituitary.

This antibody is covered by our [Worry-Free Guarantee](#).

Citations: 4

[View Online »](#)

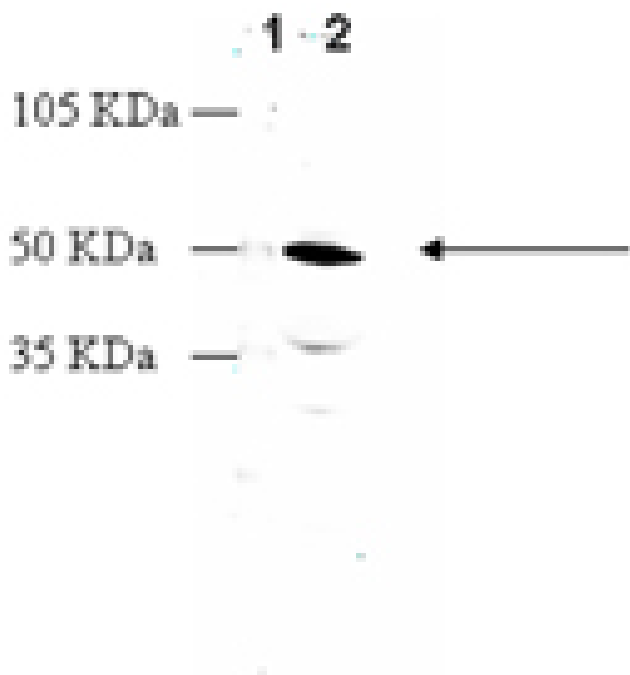
Ordering Information

[Order Online »](#)

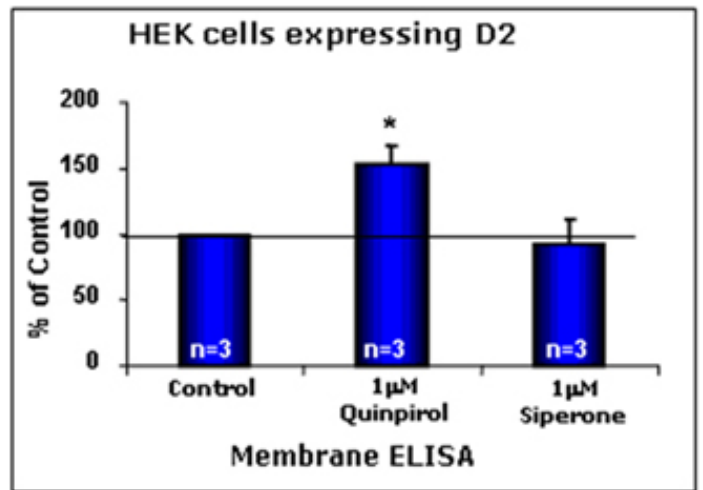
ADI-905-740-100	100µg
-----------------	-------

Manuals, SDS & CofA

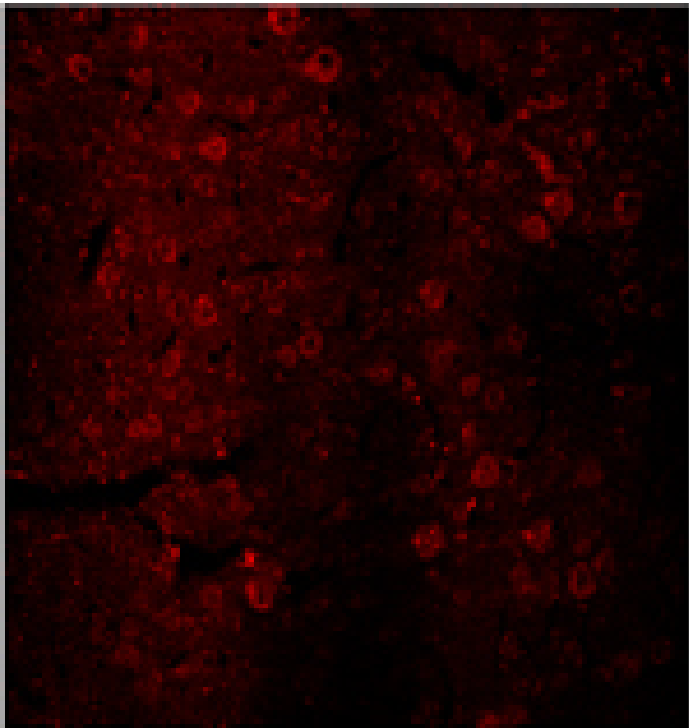
[View Online »](#)



Western blot analysis: MW marker (1) and 10 μ g of rat heart membrane extract (2) probed with Dopamine Receptor (D2) pAb at 4.0 μ g/ml.



Cellular ELISA: HEK293 cells expressing dopamine receptor (D2) were treated with indicated concentrations of agonist (Quinpirol) and antagonist (Siperone) and probed with Dopamine Receptor (D2) pAb (1:1000 of a stock solution of 1 μ g/ μ L) by cellular ELISA. Data from vehicle treated cells were taken as 100%. Results are the mean \pm SEM (n=3).



Immunohistochemistry analysis: Fluorescent confocal photomicrograph of rat cerebral cortex. Neurons are labeled with Dopamine Receptor (D2) pAb in conjunction with Cy3 conjugated rabbit IgG antibody (H+L).

Handling & Storage

Handling Keep on ice at all times.

Long Term Storage -20°C

Shipping Blue Ice

Regulatory Status RUO - Research Use Only

Product Details

Alternative Name DRD, D2R

Application ELISA, IHC, WB

Application Notes Suitable for cell-based and membrane-based ELISA.
Predicted MW of ~51kDa.

Crossreactivity Predicted species reactivity based on epitope sequence homology: rhesus macaque, chimpanzee, horse, arctic fox, dog, opossum, ferret.

Formulation Liquid. In PBS containing 50% glycerol and 0.01% sodium azide.

Host Rabbit

Immunogen Synthetic peptide corresponding to the sequence near the N-terminus of mouse dopamine receptor D2</sub>.

Purity Detail Peptide affinity purified.

Species Reactivity Human, Mouse, Rat

UniProt ID P61168

Worry-free Guarantee This antibody is covered by our [Worry-Free Guarantee](#).



ENZO LIFE SCIENCES,
INC.
Phone: 800.942.0430
[info-
usa@enzolifesciences.com](mailto:info-usa@enzolifesciences.com)

European Sales Office
ENZO LIFE SCIENCES
(ELS) AG
Phone: +41 61 926 8989
[info-
eu@enzolifesciences.com](mailto:info-eu@enzolifesciences.com)

Belgium, The Netherlands
& Luxembourg
Phone: +32 3 466 0420
[info-
be@enzolifesciences.com](mailto:info-be@enzolifesciences.com)

France
Phone: +33 472 440 655
[info-
fr@enzolifesciences.com](mailto:info-fr@enzolifesciences.com)

Germany
Phone: +49 7621 5500 526
[info-
de@enzolifesciences.com](mailto:info-de@enzolifesciences.com)

UK & Ireland
Phone (UK customers):
0845 601 1488
Phone: +44 1392 825900
[info-
uk@enzolifesciences.com](mailto:info-uk@enzolifesciences.com)