

DNA-topoisomerase II α monoclonal antibody (1C5)

DNA-topoisomerase II, also known as Topo II or Top 2, is a multifunctional nuclear enzyme required during DNA replication, chromosome disjunction at mitosis, and other DNA-related activities because of its ability to alter DNA supercoiling. In mammalian cells, Topo II consists of two isozymes, Topo II-alpha (170kDa) and Topo II-beta (180kDa) and expression and localization of each isoform are distinct and stage specific during the cell cycle. Topo II-beta is expressed constitutively throughout the cell cycle, whereas the expression of Topo II-alpha is cell cycle-regulated, peaking in G2 to M phase and declining to a minimal level at the end of M phase. DNA-topoisomerase II is the target of some of the most active drugs used in chemotherapy and has been shown to have a critical role in neural development.

This antibody is covered by our [Worry-Free Guarantee](#).

Citations: 4

[View Online »](#)

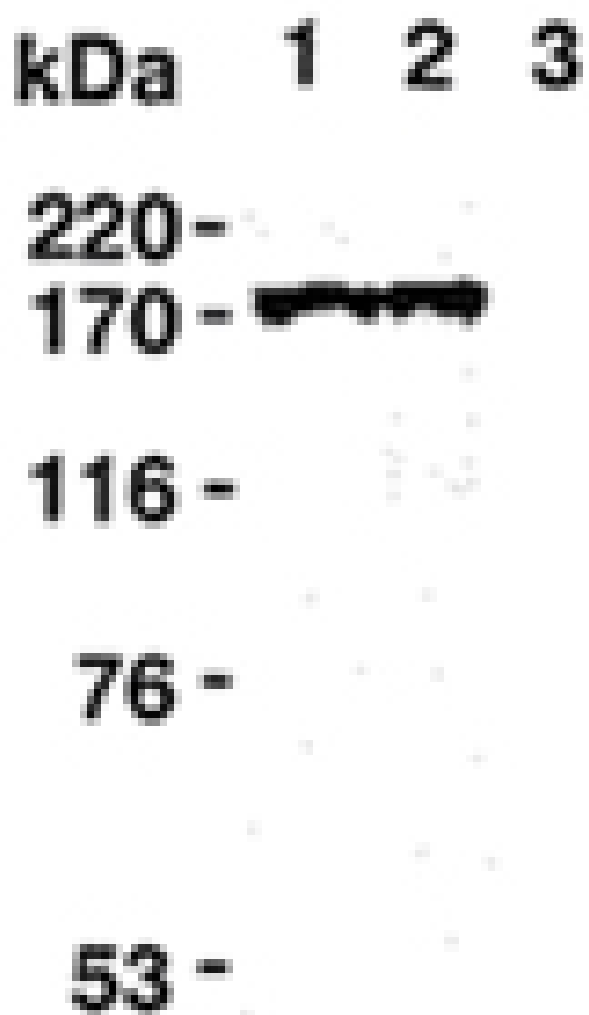
Ordering Information

[Order Online »](#)

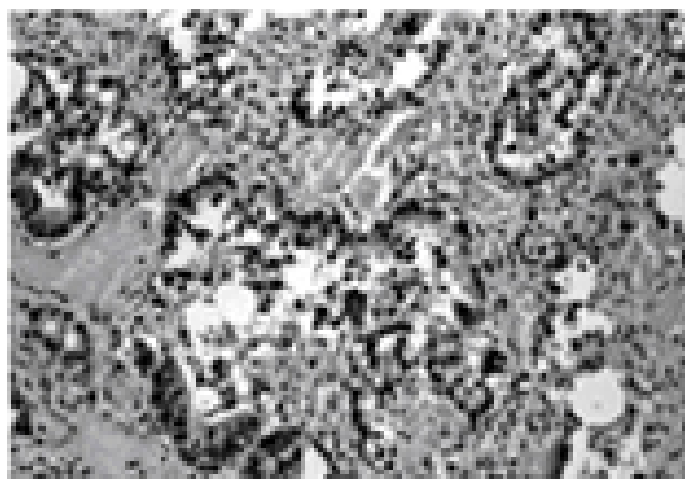
ADI-KAM-CC210-E	100µg
-----------------	-------

Manuals, SDS & CofA

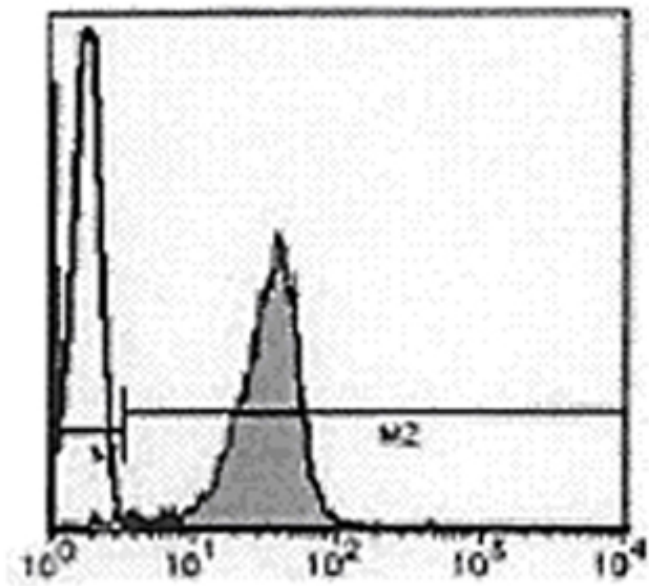
[View Online »](#)



Western blot analysis of Jurkat cell lysate, probed with DNA-Topoisomerase IIa mAb (1C5)



Immunohistochemistry analysis of nuclear staining of colon cancer section using DNA-Topoisomerase IIa mAb (1C5)



Flow cytometry analysis of DNA-Topoisomerase IIa expression in Jurkat. Open histogram indicates reaction of isotypic control to the cells. Shaded histogram indicates the reaction of DNA-Topoisomerase IIa to the cells.

Handling & Storage

Long Term Storage -20°C

Shipping Blue Ice

Regulatory Status RUO - Research Use Only

Product Details

Application Flow Cytometry, ICC, IHC, IP, WB

Application Notes Detects a band of 170kDa by Western blot.

Clone 1C5

Formulation Liquid. In PBS, pH 7.2, containing 50% glycerol.

Host Mouse

Immunogen Recombinant human DNA-topoisomerase II α (C-terminal fragment).

Isotype IgG2a

Purity Detail Protein A affinity purified.

Recommendation
Dilutions/Conditions Flow Cytometry (0.1-1.0 μ g/ml)Immunocytochemistry (1-10 μ g/ml)Immunohistochemistry (1-5 μ g/ml)Immunoprecipitation (1-10 μ g/ml, 200-300ml cell extract)Western Blot (0.1-0.5 μ g/ml, ECL)Suggested dilutions/conditions may not be available for all applications.Optimal conditions must be determined individually for each application.

Species Reactivity Human

UniProt ID P11388

Worry-free Guarantee This antibody is covered by our [Worry-Free Guarantee](#).



ENZO LIFE SCIENCES,
INC.
Phone: 800.942.0430
[info-
usa@enzolifesciences.com](mailto:info-usa@enzolifesciences.com)

European Sales Office
ENZO LIFE SCIENCES
(ELS) AG
Phone: +41 61 926 8989
[info-
eu@enzolifesciences.com](mailto:info-eu@enzolifesciences.com)

Belgium, The Netherlands
& Luxembourg
Phone: +32 3 466 0420
[info-
fr@enzolifesciences.com](mailto:info-fr@enzolifesciences.com)

France
Phone: +33 472 440 655
[info-
fr@enzolifesciences.com](mailto:info-fr@enzolifesciences.com)

Germany
Phone: +49 7621 5500 526
[info-
de@enzolifesciences.com](mailto:info-de@enzolifesciences.com)

UK & Ireland
Phone (UK customers):
0845 601 1488
Phone: +44 1392 825900
[info-
uk@enzolifesciences.com](mailto:info-uk@enzolifesciences.com)