

Dishevelled-1

polyclonal antibody

The *Drosophila* segment polarity gene dishevelled (dsh) encodes a glycoprotein which has been shown to be the convergence point between the wingless (Wg) and Notch signalling pathways. Homologous genes have been identified in mammals, and three isoforms of dishevelled (dvl-1, -2 and -3) are now known to exist in humans and mice. A rat dvl-1 homologue has recently been described. Each isoform contains distinct domains – N-terminal DIX (domain present in dishevelled and axin, also known as DAX), PDZ and DEP (domain present in dishevelled, Egl-10 and pleckstrin). The DIX domain is important for protein-protein interactions and for the regulation of β -catenin stability, whereas the DEP domain transduces signals to effector proteins downstream of dvl in the Wnt (mammalian Wg homologue) pathway. Recently, dvl-1 has been shown to regulate α -secretase cleavage of amyloid precursor protein (APP), *via* JNK, PKC and MAP-kinase signalling. As dvl-1 inhibits GSK-3 β activity, both reducing the phosphorylation of tau and regulating microtubule stability, dvl may be of particular importance in the maintenance of neuronal structure and function.

This antibody is covered by our [Worry-Free Guarantee](#).

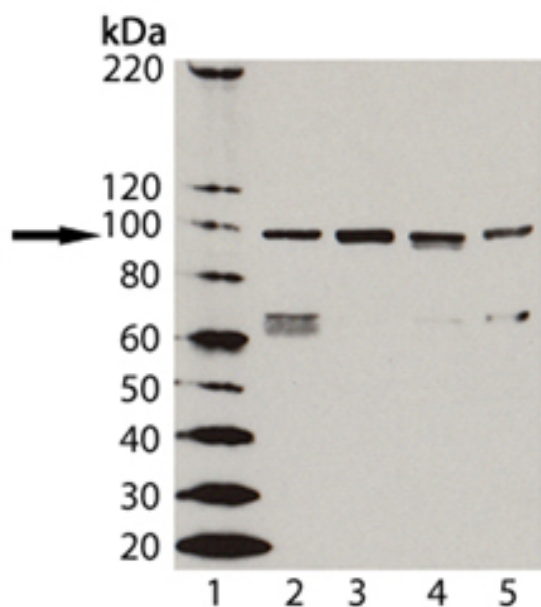
Ordering Information

[Order Online »](#)

BML-DA4170-0100	100 μ l
-----------------	-------------

Manuals, SDS & CofA

[View Online »](#)



Western Blot analysis of Dishevelled-1 pAb (Prod. No. BML-DA4170): Lane1: MW Marker; Lane 2:PC-3 Cell Lysate; Lane 3: Jurkat Cell Lysate (Prod. No. ADI-LYC-JK100); Lane 4: 3T3 Cell Lysate (Prod. No. ADI-LYC-3T100); and Lane 5: PC-12 Cell Lysate (Prod. No. ADI-LYC-PC100).

Handling & Storage

Long Term Storage -20°C

Shipping Blue Ice

Regulatory Status

RUO - Research Use Only

Product Details

Alternative Name DVL-1

Application WB

Application Notes Detects a band of ~85kDa by Western blot.

Formulation Liquid. In PBS, pH 7.4, containing 10mM sodium azide.

Host Rabbit

Immunogen Synthetic peptide corresponding to aa 557-571 (CS557RRAPGREKERRAAG571) of human dishevelled 1 protein.

Purity Detail Protein A-affinity purified.

Source Purified from rabbit serum.

Species Reactivity Human, Mouse, Rat

UniProt ID O14640

Worry-free Guarantee This antibody is covered by our [Worry-Free Guarantee](#)

.

Last modified: May 29, 2024



ENZO LIFE SCIENCES,
INC.
Phone: 800.942.0430
[info-
usa@enzolifesciences.com](mailto:info-usa@enzolifesciences.com)

European Sales Office
ENZO LIFE SCIENCES
(ELS) AG
Phone: +41 61 926 8989
[info-
be@enzolifesciences.com](mailto:info-be@enzolifesciences.com)

Belgium, The Netherlands
& Luxembourg
Phone: +32 3 466 0420
[info-
fr@enzolifesciences.com](mailto:info-fr@enzolifesciences.com)

France
Phone: +33 472 440 655
[info-
fr@enzolifesciences.com](mailto:info-fr@enzolifesciences.com)

Germany
Phone: +49 7621 5500 526
[info-
de@enzolifesciences.com](mailto:info-de@enzolifesciences.com)

UK & Ireland
Phone (UK customers):
0845 601 1488
Phone: +44 1392 825900
[info-
uk@enzolifesciences.com](mailto:info-uk@enzolifesciences.com)